



Way of Life!

THE ULTIMATE™  
4-STROKE OUTBOARD



Suzuki's "Way of Life!" is the heart of our brand - every Suzuki vehicle, motorcycle and outboard motor is built to create excitement so customers can enjoy everyday life.



Please read your Owner's Manual carefully. Remember, boating and alcohol or other drugs don't mix. Always wear a personal flotation device when boating. Please operate your outboard safely and responsibly.

Suzuki encourages you to operate your boat safely and with respect for the marine environment.

Specifications, appearances, equipment, colors, materials and other items of "SUZUKI" products shown in this catalogue are subject to change by manufacturers at any time without notice and they may vary depending on local conditions or requirements. Some models are not available in some territories. Each model might be discontinued without notice. Please enquire at your local dealer for details of any such changes. Actual body colour might differ from the colours in this brochure.



**SUZUKI MOTOR CORPORATION**  
300 TAKATSUKA-CHO, MINAMI-KU, HAMAMATSU-SHI, SHIZUOKA 432-8611 JAPAN  
www.globalsuzuki.com

2019 OBM P&A CATALOG (INTERNAL)  
99000-79N12-370  
Printed in Japan 201810

# 2019

## SUZUKI GENUINE PARTS AND ACCESSORIES

Internal use only

THE ULTIMATE™  
4-STROKE OUTBOARD



Way of Life!

**Dear Suzuki Dealer,**

Quality. Dependability. Innovation. Everything that you expect from your outboard motors is delivered with style by SUZUKI.

Demand no less from the products that you choose to enhance your total boating pleasure. Demand SUZUKI GENUINE ACCESSORIES.

This catalogue represents our commitment to provide you with the finest products available.

From our classic line of matching instruments and gauges to our custom-engineered propellers and rigging items, you can depend on SUZUKI GENUINE ACCESSORIES for optimum performance.

Take a few minutes to browse through this catalogue, and then be sure to contact your AUTHORIZED SUZUKI DISTRIBUTOR for further information.

Thank you.

**SUZUKI MOTOR CORPORATION**

**TABLE OF CONTENTS**

<b>SUZUKI MULTI-FUNCTION DISPLAY</b>	<b>04</b>	<b>ELECTRICAL PARTS</b>	<b>50</b>
<b>SUZUKI MULTI-FUNCTION GAUGE</b>	<b>10</b>	<b>FUEL SYSTEM</b>	<b>52</b>
<b>COMPONENT OF SUZUKI MULTI-FUNCTION GAUGE</b>	<b>24</b>	<b>PROPELLER</b>	<b>54</b>
<b>SUZUKI KEYLESS START SYSTEM</b>	<b>26</b>	<b>WATERGRIP</b>	<b>56</b>
<b>ANALOG INSTRUMENT</b>	<b>30</b>	<b>PROPELLER LINE-UP</b>	<b>58</b>
<b>SUZUKI PRECISION CONTROL</b>	<b>32</b>	<b>CARE &amp; MAINTENANCE ITEM</b>	<b>60</b>
<b>COMPONENT OF SUZUKI PRECISION CONTROL</b>	<b>40</b>	<b>SUZUKI MAINTENANCE KITS</b>	<b>62</b>
<b>MECHANICAL REMOTE CONTROL SYSTEM</b>	<b>42</b>	<b>ANODE</b>	<b>64</b>
<b>COMPONENT OF MECHANICAL REMOTE CONTROL SYSTEM</b>	<b>46</b>	<b>Recommended STEERING SYSTEM</b>	<b>66</b>
<b>STEERING</b>	<b>48</b>	<b>APPLICATION CHART</b>	<b>68</b>



**MODEL NAME AND ENGINE NUMBER**

**NOTE :** Items and their part numbers showing in this catalogue are basically applicable to models of following engine numbers. Please consult your local dealers regarding other models and their rigging-parts and accessories.

model	engine number
DF350A	35001F-910001~
DF325A	32501F-910001~
DF300AP	30002P-910001~
DF250AP	25003P-910001~
DF250	25003F-910001~
DF250Z	25003Z-910001~
DF225	22503F-910001~
DF225Z	22503Z-910001~
DF200	20002F-910001~

model	engine number
DF200Z	20002Z-910001~
DF200AP	20003P-910001~
DF200A	20003F-910001~
DF200AZ	20003Z-910001~
DF175AP	17503P-910001~
DF175A	17503F-910001~
DF175AZ	17503Z-910001~
DF150AP	15003P-910001~
DF150A	15003F-910001~

model	engine number
DF150AZ	15003Z-910001~
DF140A	14003F-910001~
DF140AZ	14003Z-910001~
DF115A	11503F-910001~
DF115AZ	11503Z-910001~
DF100A	10003F-910001~
DF100B	10004F-910001~
DF90A	09003F-910001~
DF80A	08002F-910001~

model	engine number
DF70A	07003F-910001~
DF60A	06002F-910001~
DF60AV	06003F-910001~
DF50A	05003F-910001~
DF50AV	05004F-910001~
DF40A	04003F-910001~
DF30A	03003F-910001~
DF25A	02504F-910001~
DF20A	02002F-910001~

model	engine number
DF15A	01504F-910001~
DF9.9B	00995F-910001~
DF9.9A	00994F-910001~
DF8A	00801F-910001~
DF6A	00603F-910001~
DF5A	00503F-910001~
DF4A	00403F-910001~
DF2.5	00252F-910001~

model	engine number
DT40W	04005-910001~
DT40WK	04005K-910001~
DT30	03005-910001~
DT25K	02503K-910001~
DT15A	01504-910001~
DT15AK	01503K-910001~
DT9.9A	00996-910001~
DT9.9AK	00993K-910001~

**REFERENCE**

Part Number	15-digit alpha-numerical number shows Part Number to be used for ordering.
Gauge Size	Shows the size (2" or 4") of the gauge.
Background	Shows a main color of display panel on the front of a gauge.
Applicable Model	Shows typical or recommended models of ENGINES that RIGGING-PARTS and ACCESSORIES can be installed to.
Maximum Speed	Shows maximum speed that SPEEDOMETER displays.
kph	Kilometers Per Hour
mph	Miles Per Hour
knots	Knots

# SUZUKI MULTI-FUNCTION DISPLAY



## OPERATION SYSTEMS NEW MULTI-FUNCTION DISPLAY Connected to Earth

The all new Multi-Function Display and its features offers you access to all the information you need to be assured for a comfortable and Ultimate boating experience. Coming in 2019.

## ULTIMATE CONNECTIVITY

With the Multi-Function Display your boat and engine can now be connected to global weather and be in touch with your surrounding environment, as well as control and operate all your other devices on your boat.

Control at the touch of a finger with the touch screen glass top design. Available in 7", 9", 12" and 16" inch screens.



## KEY BENEFIT

The Suzuki Multi-Function Display gives you access to all your Suzuki engine information, so you can easily and quickly see the performance of your outboard/s in one clear view.



DIGITAL SWITCHING

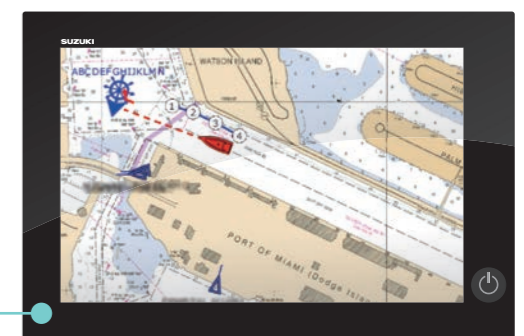
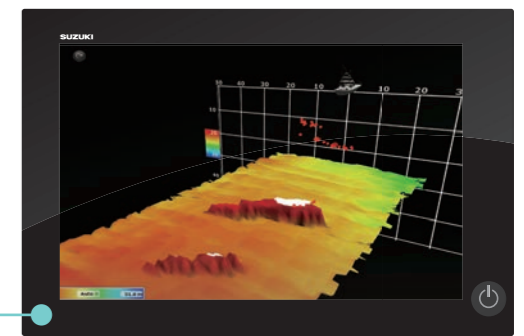
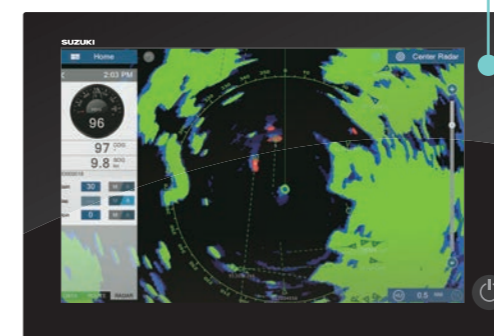


CHART PLOTTER



MULTI BEAM SONAR



RADAR



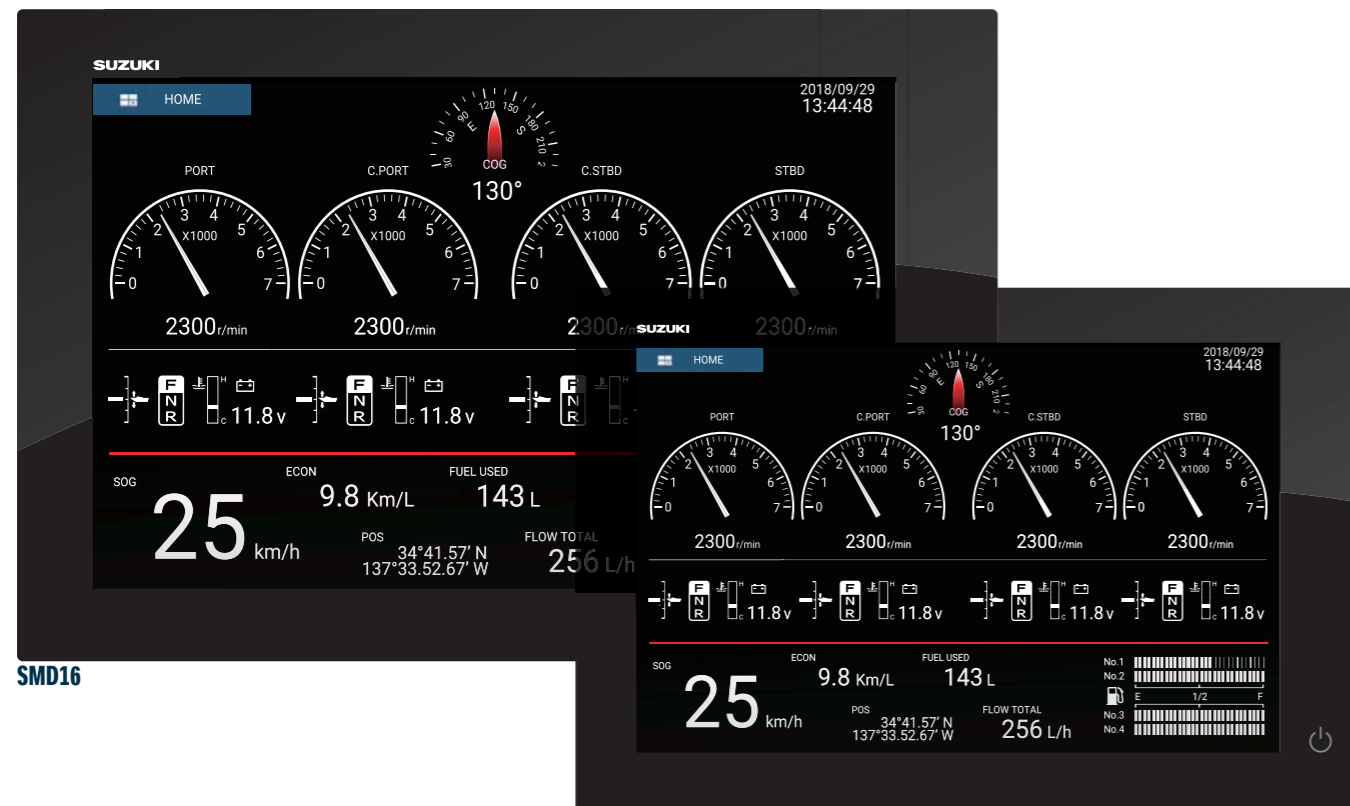
WEATHER

# SUZUKI MULTI-FUNCTION DISPLAY



## OPERATION SYSTEMS NEW MULTI-FUNCTION DISPLAY Customising your display – SMD16 & SMD12

Big screen navigation for large boats. The 16" and 12" allow you to choose the screen size that best matches your helm or bridge needs. You can build your system with the best sensors and technologies to suit your needs. Coming in 2019.



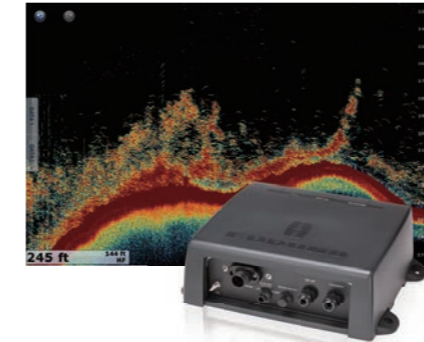
SMD16

SMD12

### RECOMMENDED OPTIONAL INSTRUMENTS FOR MULTI FUNCTION DISPLAY BY **FURUNO**

\*Supplied by FURUNO

#### FISH FINDER



##### BBDS1 Bottom Discrimination Sounder

- Enhanced detection of fish echoes using FURUNO Digital Filter (FDF™) Fish Finder technology
- Dual frequency, 50 kHz and 200 kHz

##### DFF1-UHD Network TruEcho CHIRP™ Fish Finder

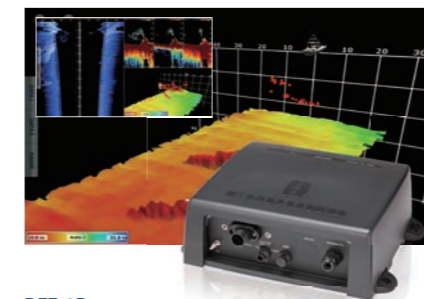
- TruEcho CHIRP™ technology
- Designed to operate over a broadband range of frequencies utilising a broadband transducer
- Clear presentation separates bottom structure from bottom fish, and bait fish from game fish

##### DFF3 Network Fish Finder

- Enhanced detection of fish echoes using FURUNO Digital Filter (FDF™) Fish Finder technology
- FURUNO Free Synthesiser transceiver to let you choose any two operating frequencies from 28 to 200 kHz

	BBDS1	DFF1-UHD	DFF3
Display Modes	Single (50 or 200 kHz), Dual (50 and 200 kHz), Bottom-lock, Bottom-Zoom, ACCU-FISH™, Bottom Discrimination, A-scope	Single (High or Low frequency), Dual (Both High and Low frequencies), Bottom-lock, Bottom-Zoom, ACCU-FISH™, Bottom Discrimination, A-Scope	Single (high or low), Dual (high and low), Bottom-lock, Bottom-Zoom, ACCU-FISH™, A-scope * With Transducer (50/200-17) only.
Range Scale	Max. 1,200 m	Max. 1,200 m	Max. 3,000 m
Power Supply	12-24 VDC, 12 W, 1.1-0.4 A	12-24 VDC, 30 W, 2.8-1.4 A	12-24 VDC, 30 W, 3.5 A
Transducers	600 W/1 kW*, 50/200 kHz * Optional Matching Box, MB-1100 may be required.	1 kW, Broadband transducers 42-65 kHz (low), 130-210 kHz (high)	1/2/3 kW, Frequency: 28, 38, 50, 68, 82, 88, 107, 150, 200 kHz, 50/200 kHz

#### SONAR



##### DFF-3D Network Multi Beam Sonar

- Sidebar detection range is up to 200 m in a 120-degree swath port and starboard direction\*
- Deep water, main beam penetration directly under the boat is approx. 300 m\*
- \* Maximum depth depending on installation, bottom type and water conditions.

Display Modes	Cross Section, Triple/Single Beam Sounder, Side Scan, 3D Sounder History
Range Scale	Max. 1,200 m
Power Supply	12-24 VDC, 1.4-0.7 A
Transducers	800 W, 2 types (thru-hull and transom mount)

#### RADAR



##### DRS4D-NXT/DRS6A-NXT Solid State Radar Sensor

- Solid-State pulse compression Doppler Radar
- Revolutionary Target Analyzer™ function instantly identifies hazardous targets
- Fast Target Tracking™ and Auto Target Acquire function, up to 100 targets
- Bird Mode to find the best fishing grounds by tracking birds

Peak Output Power	Solid-state, 25 W
Type	DRS4D-NXT: ø610 mm Radome (24"), DRS6A-NXT: 1036 mm Open (3.5")/1255 mm Open (4")/1795 mm Open (6")
Antenna Rotation Speed	24*/36/48 rpm range coupled or 24 rpm fixed * In dual range mode, speed is limited to 24 rpm.
Power Supply	12-24 VDC, DRS4D-NXT: 2.5-1.3 A, DRS6A-NXT: 9.5-5.0A



##### DRS6A X-CLASS Radar Sensor

- Enhanced target detection, both short and long range
- Bird mode helps you identify birds, adjusting the gain and sea settings automatically for optimal visibility
- Fast Target Tracking™, takes only seconds for a speed and course vector to be displayed

Peak Output Power	6 kW
Type	1036 mm Open (3.5")/1255 mm Open (4")/1795 mm Open (6")
Antenna Rotation Speed	24*/36/48 rpm range coupled or 24 rpm fixed
Power Supply	24 VDC, 4 A

#### AIS RECEIVER



##### FA-30

- Enhances navigation by receiving critical navigation information from local AIS-equipped vessels

Power Supply	12-24 VDC, 1.2-0.6 A
--------------	----------------------

#### VHF RADIO TELEPHONE



##### FM-4800 VHF Radio Telephone with built-in AIS Receiver

- Built-in AIS Receiver for situational awareness and collision avoidance
- Built-in 72 channels GPS Receiver
- 25 W/1 W output power
- Class D DSC with Distress, Individual and All Ship calls
- 30 W PA/Loud Hailer with automatic fog signals and listen back

AIS Receiver	Receiving Frequency (CH): 161.975 MHz (AIS1), 162.025 MHz (AIS2)
Output Power	Transmitter: 25 W max., 1 W at power reduction. Loud Hailer/Fog Horn: 30 W max. (4 ohm)
Power Supply	12 VDC (-10% to +30%), 5.0 A max.

#### SATELLITE COMPASS / HEADING SENSOR



##### SC-33 Satellite Compass™

- Provides highly accurate heading data for Autopilot, Radar, and Chart Plotter

##### PG-700 Integrated Heading Sensor

- Provides heading data of high accuracy
- Black box type fluxgate magnetic sensor
- CAN bus interface incorporated

##### PG-500 Integrated Heading Sensor

- Inexpensive heading sensor with the highest accuracy and stability in this class of equipment
- High stability for a solid-state rate gyroscope

	SC-33	PG-700	PG-500
Heading Accuracy	0.4° rms	±1.0° (horizontal)	±1.0° (horizontal)
Heading Resolution	0.1°	0.1°	0.1°
Port	NMEA2000:1 Port	CAN bus: 1	Input: 1, Output: 2 ports (one port drives 3 outputs)
Power Supply	12-24 VDC: 0.4-0.2 A, LEN11	12 VDC: 0.1 A (LEN: 3)	12-24 VDC: 120-30 mA

# SUZUKI MULTI-FUNCTION DISPLAY



## OPERATION SYSTEMS NEW MULTI-FUNCTION DISPLAY Customising your display - SMD9 & SMD7

Powerful technology in a compact design that is compact enough to fit on small runabouts and centre consoles. The 9" and 7" touch screens enable you to operate the chart plotter with built-in fish finder at the touch of a finger. Coming in 2019.



SMD9

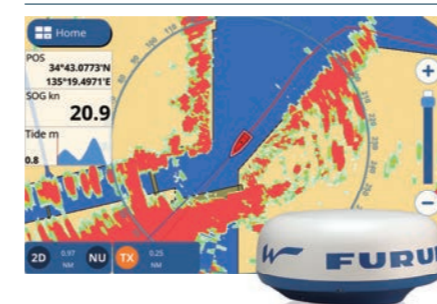


SMD7

### RECOMMENDED OPTIONAL INSTRUMENTS FOR MULTI FUNCTION DISPLAY BY **FURUNO**

\*Supplied by FURUNO

#### RADAR



##### DRS4W 1st Watch Wireless Radar

- 4 kW Radar antenna, powerful yet compact in size
- Wireless LAN, no extra wiring needed except the power source, making installation a breeze.



Peak Output Power	4 kW
Type	ø488 mm Radome (19")
Antenna Rotation Speed	24 rpm
Power Supply	12-24 VDC, 2.1-1.0 A max.

#### AIS RECEIVER



##### FA-30

- Enhances navigation by receiving critical navigation information from local AIS-equipped vessels

Power Supply	12-24 VDC, 1.2-0.6 A
--------------	----------------------

#### VHF RADIO TELEPHONE

##### FM-4800 VHF Radio Telephone with built-in AIS Receiver



- Built-in AIS Receiver for situational awareness
- Built-in 72 channels GPS Receiver
- 25 W/1 W output power
- Class D DSC with Distress, Individual and All Ship calls
- 30 W PA/Loud Hailer with automatic fog signals and listen back

AIS Receiver	Receiving Frequency (CH): 161.975 MHz (AIS1), 162.025 MHz (AIS2)
Output Power	Transmitter: 25 W max., 1 W at power reduction. Loud Hailer/Fog Horn: 30 W max. (4 ohm)
Power Supply	12 VDC (-10% to +30%), 5.0 A max.

#### SATELLITE COMPASS / HEADING SENSOR



##### SC-33 Satellite Compass™

- Provides highly accurate heading data for Autopilot, Radar, and Chart Plotter



##### PG-700 Integrated Heading Sensor

- Provides heading data of high accuracy
- Black box type fluxgate magnetic sensor
- CAN bus interface incorporated



##### PG-500 Integrated Heading Sensor

- Inexpensive heading sensor with the highest accuracy and stability in this class of equipment
- High stability for a solid-state rate gyroscope

	SC-33	PG-700	PG-500
Heading Accuracy	0.4° rms	±1.0° (horizontal)	±1.0° (horizontal)
Heading Resolution	0.1°	0.1°	0.1°
Port	NMEA2000:1 Port/NMEA2000:1 Port	CAN bus: 1	Input: 1, Output: 2 ports (one port drives 3 outputs)
Power Supply	12-24 VDC: 0.4-0.2 A, LEN11	12 VDC: 0.1 A (LEN: 3)	12-24 VDC: 120-30 mA

## OPERATION SYSTEMS GAUGES

### Multi-Function Gauge – SMG4

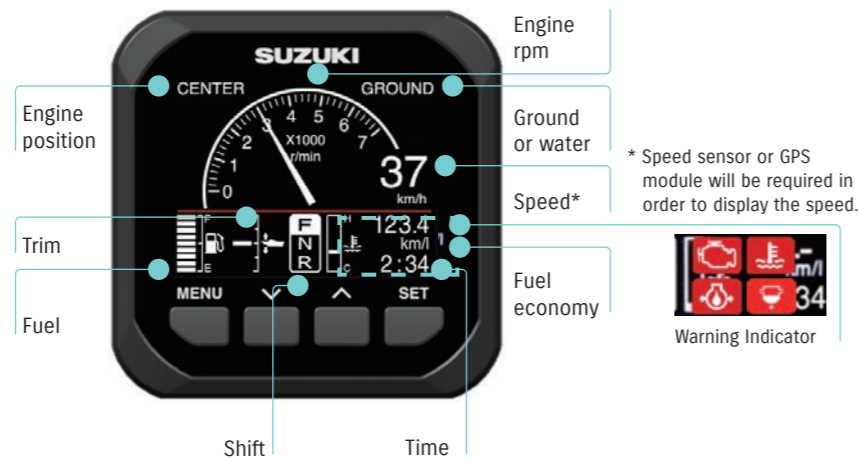
When you're on the water, it's vital that you can get the information you need, about your engine's condition and performance whenever you need it. That's exactly the thinking behind our Suzuki Multi-Function Gauge.

## ALL THE INFORMATION IN ONE PLACE

This brilliantly simple technology gives you the right information, at the right time, all on one user friendly, highly intuitive screen. You can view a wide range of important information, including engine rpm, speed and trim angle, as well as engine temp and fuel economy in 13 different measurement units, and total fuel flow for multiple engine installations. You'll also receive alerts from the engine's sensors and warning systems.

All you need for effortless and relaxing boating, in one simple, reassuring and reliable device.

ANALOGUE TACHO & SPEED MODE



TACHO MODE



## DISPLAY MODES

You can operate your Multi-Function Gauge in either digital or analogue display mode, depending on which you prefer. Plus the day and night settings

mean you can use it at literally any time. You can also zoom in on individual elements of the display, making it even easier to use.

ANALOGUE TACHO & SPEED MODE



ANALOGUE SPEED MODE (NIGHT)



ANALOGUE TACHO MODE



DIGITAL TACHO & SPEED MODE



DIGITAL TACHO MODE (NIGHT)



FUEL MODE



NEW TROLL MODE FUNCTION

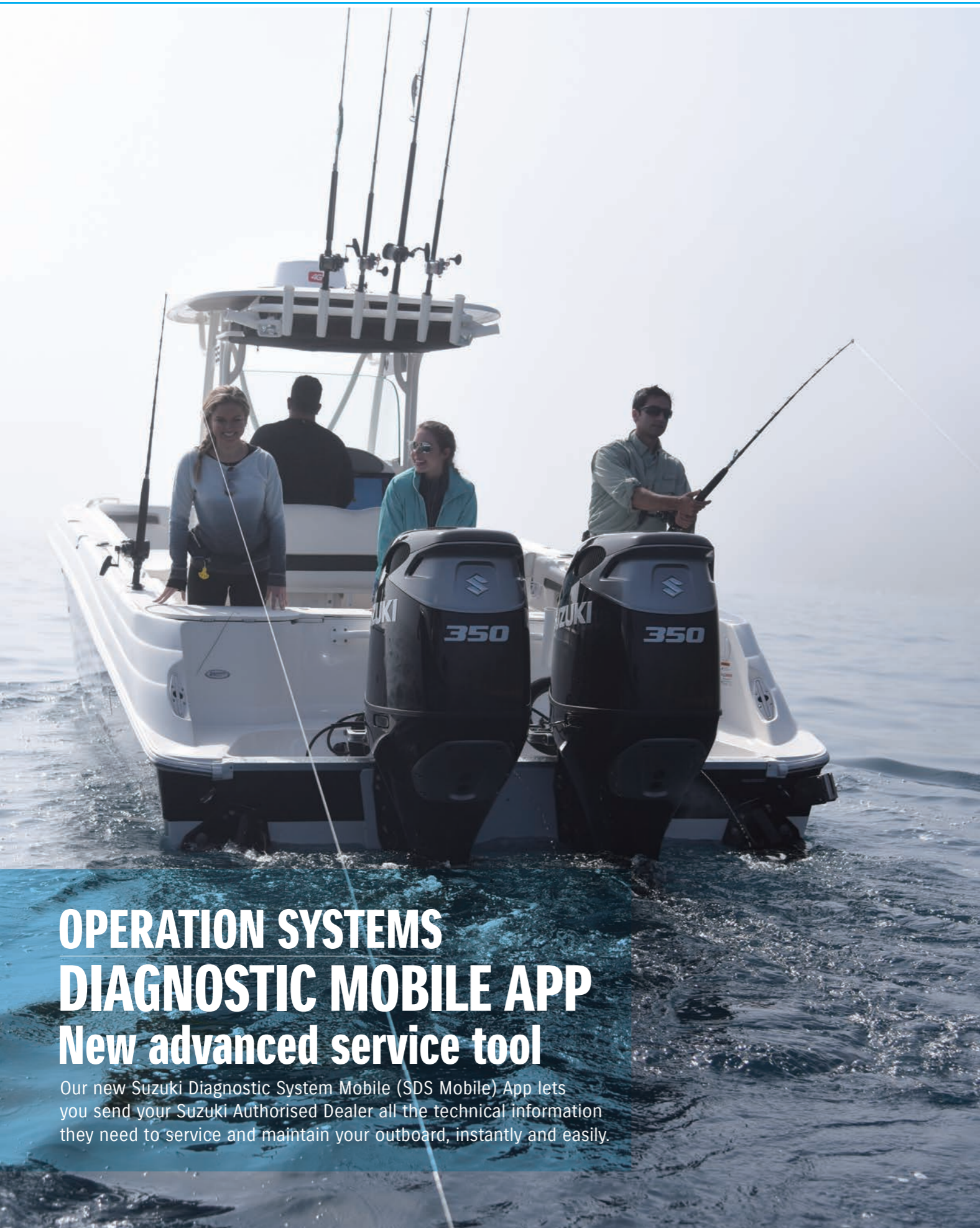
- Allows you to control your troll mode from the Multi-Function Gauge

This function is available from year 2019 models. Can only be used by models which are adapted to troll mode.

TROLL MODE



# SUZUKI MULTI-FUNCTION GAUGE



## OPERATION SYSTEMS DIAGNOSTIC MOBILE APP New advanced service tool

Our new Suzuki Diagnostic System Mobile (SDS Mobile) App lets you send your Suzuki Authorised Dealer all the technical information they need to service and maintain your outboard, instantly and easily.

SDS Mobile works in tandem with our new Multi-Function Gauge and new Multi-Function Display. Simply download the App, which is available on iOS and Android, to your smartphone: you don't need a separate device.

When you email your QR code to the Dealer the data will be transferred directly - including engine number, number of hours since the last oil change and total hours of operation at different rpm.



DOWNLOAD THE APP FROM:

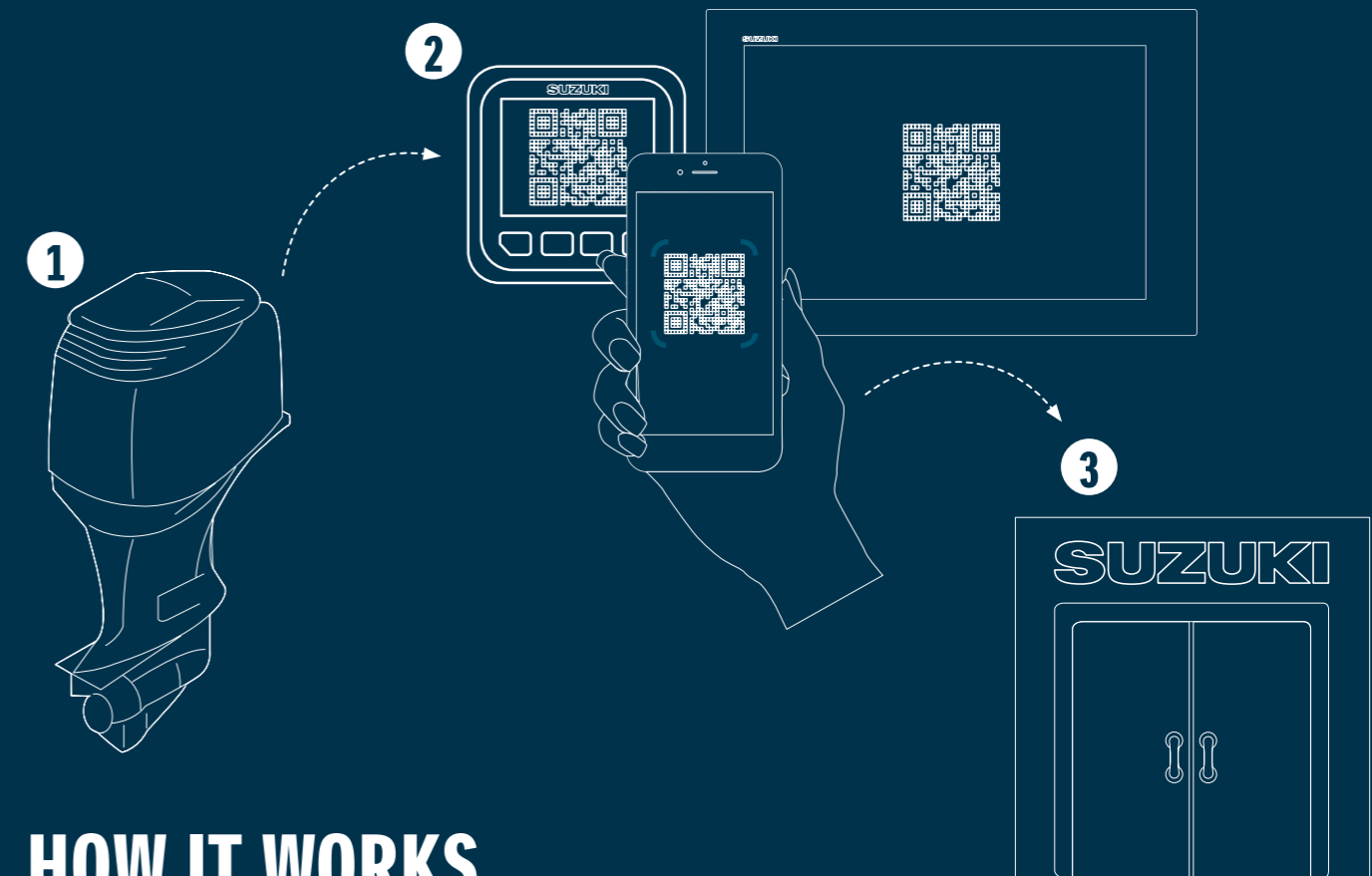


Apple and the Apple logo are trademarks of Apple Inc., registered in the U.S. and other countries. App Store is a service mark of Apple Inc., registered in the U.S. and other countries.



Google Play and the Google Play logo are trademarks of Google LLC.

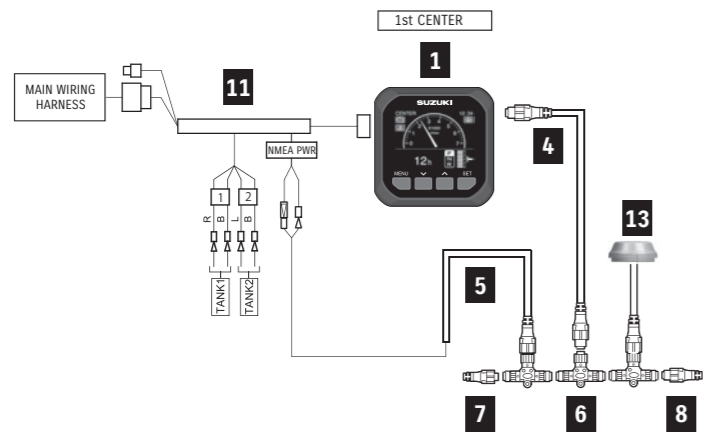
SDS Mobile App and email service is entirely free of charge.



## HOW IT WORKS

1. The Outboard sends engine data and converts it into a QR code displayed on the Multi-Function Gauge or Multi-Function Display.
2. With the SDS Mobile App, you can then scan the QR code on the Multi-Function Gauge or Multi-Function Display with your phone. The engine data will be stored on your smart phone.
3. You can then send the engine data via email to your Suzuki Dealer.

## SUZUKI MULTI-FUNCTION GAUGE for MECHANICAL SINGLE



■Basic Kit  
34000-96L43 **A. GAUGE KIT**

■When using GPS module (or water speed)  
34000-96L43 **A. GAUGE KIT**  
+36001-88L00 **B. CABLE KIT**

+39950-88L02  
(34190-88L00) GPS. Receiver Module  
When using Water Speed

■When using DF9.9B-DF30A  
**36660-89L02-000**

### Basic Component

- 1** GAUGE ASSY, MULTI
- 4** WIRE COMP, EXTENSION
- 5** HARNESS ASSY, NETWORK POWER
- 6** CONNECTOR COMP, BRANCH
- 7** UNIT COMP, RESISTOR FEMALE



- 8** UNIT COMP, RESISTOR MALE

- 11** ADAPTER COMP, GAUGE

- 13** SENSOR ASSY, PADDLE WHEEL

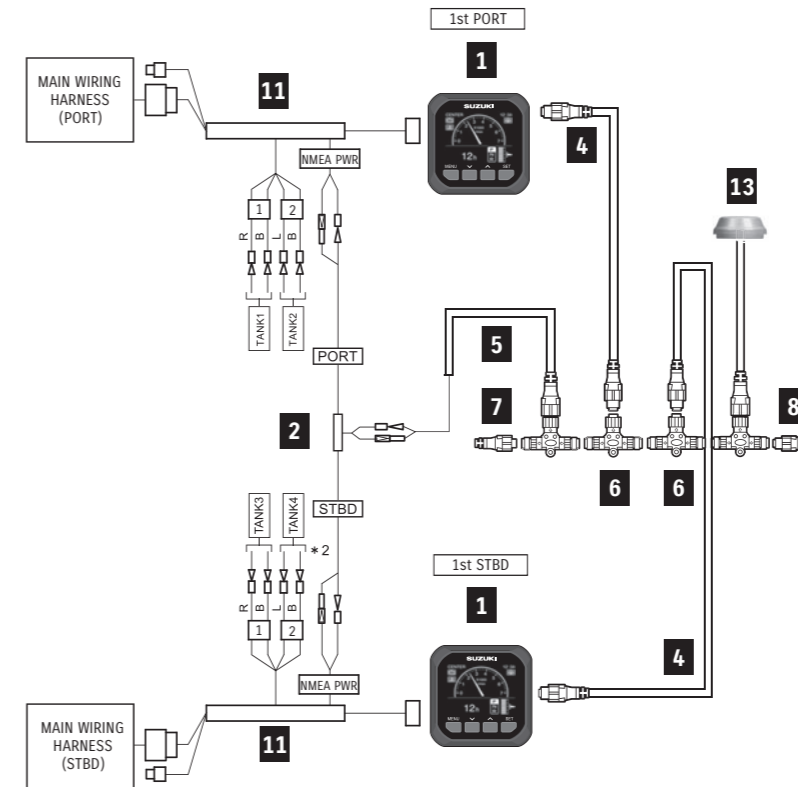
- GPS RECEIVER MODULE



SUZUKI MULTI-FUNCTION GAUGE for MECHANICAL SINGLE				KIT		Total Required Quantity
PART NUMBER	PART NAME	LENGTH	A. GAUGE KIT 34000-96L43-000	B. CABLE KIT 36001-88L00-000		
<b>1</b>	34011-96L13-000	GAUGE ASSY, MULTI	-	1	1	
<b>4</b>	36662-88L10-000	WIRE COMP, EXTENSION	0.6m	-	1	
	36662-88L20-000		1.8m	-	(1)	
<b>5</b>	36663-88L00-000	HARNESS ASSY, NETWORK POWER	-	-	1	
<b>6</b>	36664-88L00-000	CONNECTOR COMP, BRANCH	-	-	1	
<b>7</b>	36665-88L00-000	UNIT COMP, RESISTOR FEMALE	-	-	1	
<b>8</b>	36665-88L10-000	UNIT COMP, RESISTOR MALE	-	-	1	
<b>11</b>	36661-96L30-000	ADAPTER COMP, GAUGE	-	-	1	
<b>13A</b>	34190-88L00-000	SENSOR ASSY, PADDLE WHEEL	-	-	(1)	
<b>13B</b>	39950-88L02-000	GPS RECEIVER MODULE	-	-	(1)	
<b>17</b>	36660-89L02-000	SMFG, ADAPTER	-	-	<1>	

■\*( )parts are required when using GPS module or water speed.  
■\*< >part are required when using with DF9.9B to 30A.

## SUZUKI MULTI-FUNCTION GAUGE for MECHANICAL DUAL



■Basic Kit  
34000-96L53 **A. GAUGE KIT**

■When using GPS module  
34000-96L53 **A. GAUGE KIT**  
+39950-88L02  
(34190-88L00) GPS. Receiver Module  
When using Water Speed

### Basic Component

In addition to component of [MECHANICAL SINGLE]

- 2** ADAPTER, GAUGE FOR MULTI

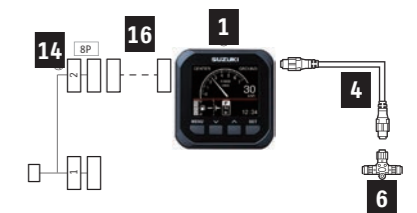


SUZUKI MULTI-FUNCTION GAUGE for MECHANICAL DUAL				KIT	Total Required Quantity
PART NUMBER	PART NAME	LENGTH	A. GAUGE KIT 34000-96L53-000		
<b>1</b>	34011-96L13-000	GAUGE ASSY, MULTI	2	A (+13)	
<b>2</b>	36665-87L10-000	ADAPTER, GAUGE FOR MULTI	1	1	
<b>4</b>	36662-88L10-000	WIRE COMP, EXTENSION	2	2	
	36662-88L20-000		-	-	
<b>5</b>	36663-88L00-000	HARNESS ASSY, NETWORK POWER	1	1	
<b>6</b>	36664-88L00-000	CONNECTOR COMP, BRANCH	2	2	
<b>7</b>	36665-88L00-000	UNIT COMP, RESISTOR FEMALE	1	1	
<b>8</b>	36665-88L10-000	UNIT COMP, RESISTOR MALE	1	1	
<b>11</b>	36661-96L30-000	ADAPTER COMP, GAUGE	2	2	
<b>13A</b>	34190-88L00-000	SENSOR ASSY, PADDLE WHEEL	-	(1)	
<b>13B</b>	39950-88L02-000	GPS RECEIVER MODULE	-	(1)	

■\*( )parts are required when using GPS module or water speed.

ADDITIONAL GAUGE COMPONENTS				Total Required
PART NUMBER	PART NAME	LENGTH		
<b>1</b>	34011-96L13-000	GAUGE ASSY, MULTI	1	
<b>4</b>	36662-88L10-000	WIRE COMP, EXTENSION	1	
	36662-88L20-000		1	
<b>6</b>	36664-88L00-000	CONNECTOR COMP, BRANCH	1	
<b>14</b>	36667-96L11-000	WIRE COMP, DUAL GAUGE ADAPTER	1	
<b>16</b>	36667-96L20-000	WIRE, GAUGE EXT	-	

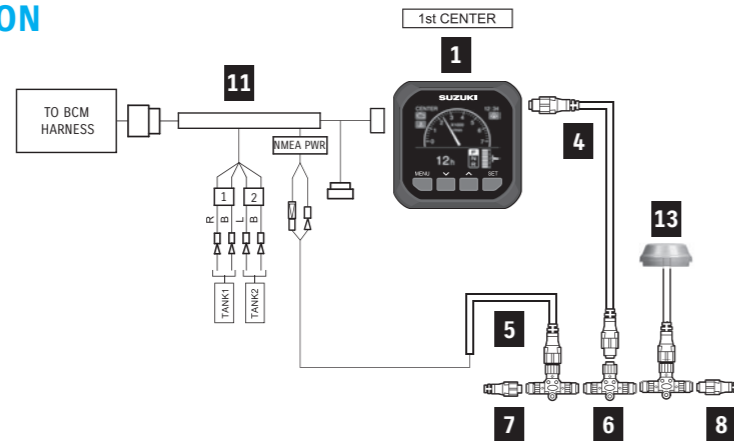
Please use "36667-96L20-000 WIRE, GAUGE EXT" as an extension between "34011-96L13" and "36667-96L11"



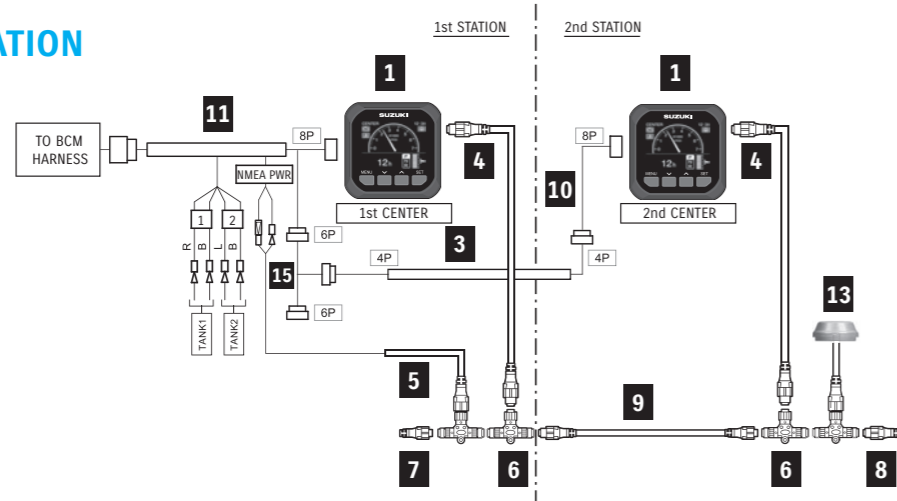


## SUZUKI MULTI-FUNCTION GAUGE for SUZUKI PRECISION CONTROL SINGLE

### SINGLE STATION



### DUAL STATION



In addition to component of [SINGLE STATION]

**3** WIRE COMP, GAUGE EXT



## TOTAL REQUIREMENT LIST

SUZUKI MULTI-FUNCTION GAUGE for SUZUKI PRECISION CONTROL (S.P.C) SINGLE		Total Required Quantity					
PART NUMBER	PART NAME	SINGLE STATION	SINGLE STATION (Using Water Speed)	SINGLE STATION (Using GPS module)	DUAL STATION	DUAL STATION (Using Water Speed)	DUAL STATION (Using GPS module)
34000-96L63-000	GAUGE KIT	1	1	1	1	1	1
36001-88L00-000	CABLE KIT	-	1	1	1	1	1
34002-96L13-000	DUAL STATION KIT	-	-	-	1	1	1
9	36662-88L30-000 36662-88L00-000 WIRE COMP, EXTENSION	-	-	-	1	1	1
13A	34190-88L00-000 SENSOR ASSY, PADDLE WHEEL	-	1	-	-	1	-
13B	39950-88L02-000 GPS RECEIVER MODULE	-	-	1	-	-	1

## COMPONENT LIST

KIT COMPONENT	PART NUMBER	PART NAME	LENGTH	KIT		
				GAUGE KIT	CABLE KIT	DUAL STATION KIT
1	34011-96L13-000	GAUGE ASSY, MULTI	-	1	-	1
3	36682-92E00-000	WIRE COMP, GAUGE EXT	6.4m	-	-	1
4	36662-88L10-000	WIRE COMP, EXTENSION	0.6m	-	1	1
5	36663-88L00-000	HARNESS ASSY, NETWORK POWER	-	-	1	-
6	36664-88L00-000	CONNECTOR COMP, BRANCH	-	-	1	1
7	36665-88L00-000	UNIT COMP, RESISTOR FEMALE	-	-	1	-
8	36665-88L10-000	UNIT COMP, RESISTOR MALE	-	-	1	-
10	36666-96L00-000	ADAPTER, GAUGE POWER	-	-	-	1
11	36661-96L20-000	ADAPTER COMP, GAUGE	-	1	-	-
15	36665-96L00-000	ADAPTER COMP, DUAL STATION	-	-	-	1

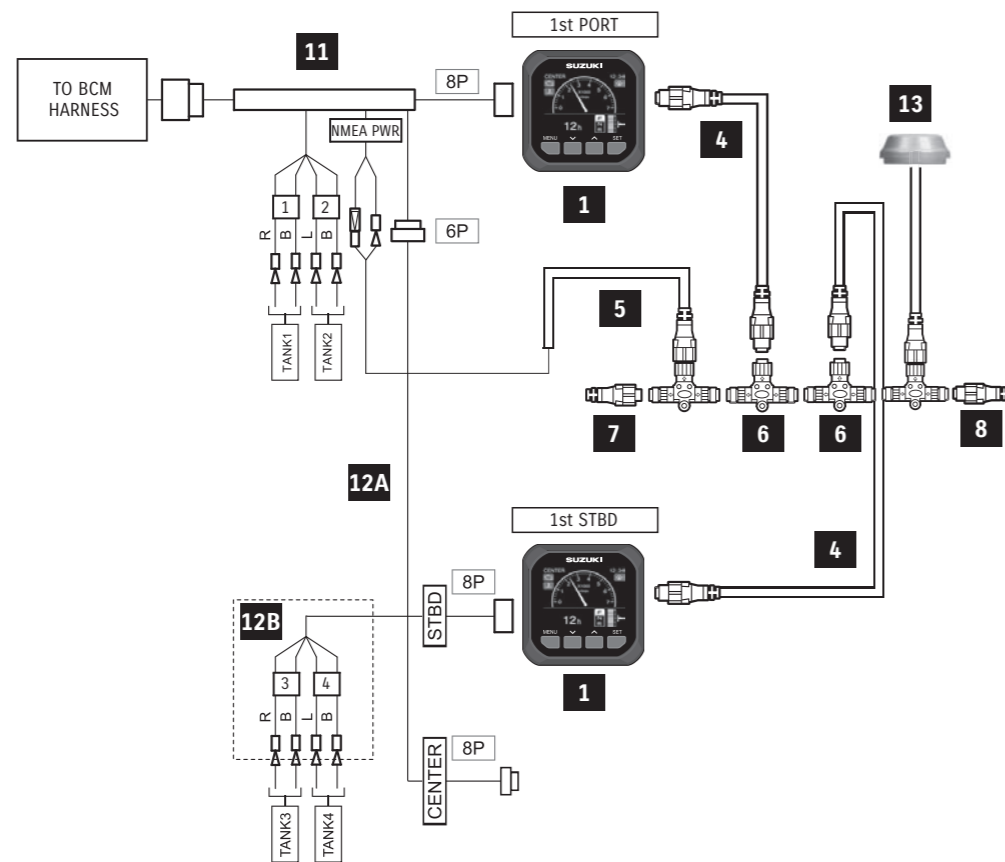
### Optional Component list

4	36662-88L20-000	WIRE COMP, EXTENSION	1.8m
	36662-88L30-000	WIRE COMP, EXTENSION	4.7m
9	36662-88L00-000	WIRE COMP, EXTENSION	7.6m
13A	34190-88L00-000	SENSOR ASSY, PADDLE WHEEL	
13B	39950-88L02-000	GPS RECEIVER MODULE	

### Component Parts

<b>1</b> GAUGE ASSY, MULTI	<b>4</b> WIRE COMP, EXTENSION	<b>5</b> HARNESS ASSY, NETWORK POWER	<b>6</b> CONNECTOR COMP, BRANCH	<b>7</b> UNIT COMP, RESISTOR FEMALE
<b>8</b> UNIT COMP, RESISTOR MALE	<b>11</b> ADAPTER COMP, GAUGE	<b>13</b> SENSOR ASSY, PADDLE WHEEL	GPS RECEIVER MODULE	

## SUZUKI MULTI-FUNCTION GAUGE for SUZUKI PRECISION CONTROL DUAL



## TOTAL REQUIREMENT LIST

SUZUKI MULTI-FUNCTION GAUGE for SUZUKI PRECISION CONTROL (S.P.C) DUAL		Total Required Quantity					
PART NUMBER	PART NAME	SINGLE STATION	SINGLE STATION (Using Water Speed)	SINGLE STATION (Using GPS module)	DUAL STATION	DUAL STATION (Using Water Speed)	DUAL STATION (Using GPS module)
34000-96L73-000	GAUGE KIT	1	1	1	1	1	1
34002-96L13-000	DUAL STATION KIT	-	-	-	1	1	1
1	34011-96L13-000 GAUGE ASSY, MULTI	-	-	-	1	1	1
4	36662-88L10-000 WIRE COMP, EXTENSION	-	-	-	1	1	1
6	36664-88L00-000 CONNECTOR COMP, BRANCH	-	-	-	1	1	1
9	36662-88L30-000 WIRE COMP, EXTENSION	-	-	-	1	1	1
13A	34190-88L00-000 SENSOR ASSY, PADDLE WHEEL	-	1	-	-	1	-
13B	39950-88L02-000 GPS RECEIVER MODULE	-	-	1	-	-	1
14	36667-96L11-000 WIRE COMP, GAUGE ADAPTER	-	-	-	1	1	1
15	36665-96L00-000 ADAPTER COMP, DUAL STATION	-	-	-	1	1	1

## COMPONENT LIST

PART NUMBER	PART NAME	LENGTH	KIT	
			GAUGE KIT	DUAL STATION KIT
1	34011-96L13-000 GAUGE ASSY, MULTI	-	2	1
3	36682-92E00-000 WIRE COMP, GAUGE EXT	6.4m	-	1
4	36662-88L10-000 WIRE COMP, EXTENSION	0.6m	2	1
5	36663-88L00-000 HARNESS ASSY, NETWORK POWER	-	1	-
6	36664-88L00-000 CONNECTOR COMP, BRANCH	-	2	1
7	36665-88L00-000 UNIT COMP, RESISTOR FEMALE	-	1	-
8	36665-88L10-000 UNIT COMP, RESISTOR MALE	-	1	-
10	36666-96L00-000 ADAPTER, GAUGE POWER	-	-	1
11	36661-96L20-000 ADAPTER COMP, GAUGE	-	1	-
12A	36667-96L00-000 WIRE COMP, GAUGE ADAPTER	-	1	-
15	36665-96L00-000 ADAPTER COMP, DUAL STATION	-	-	1

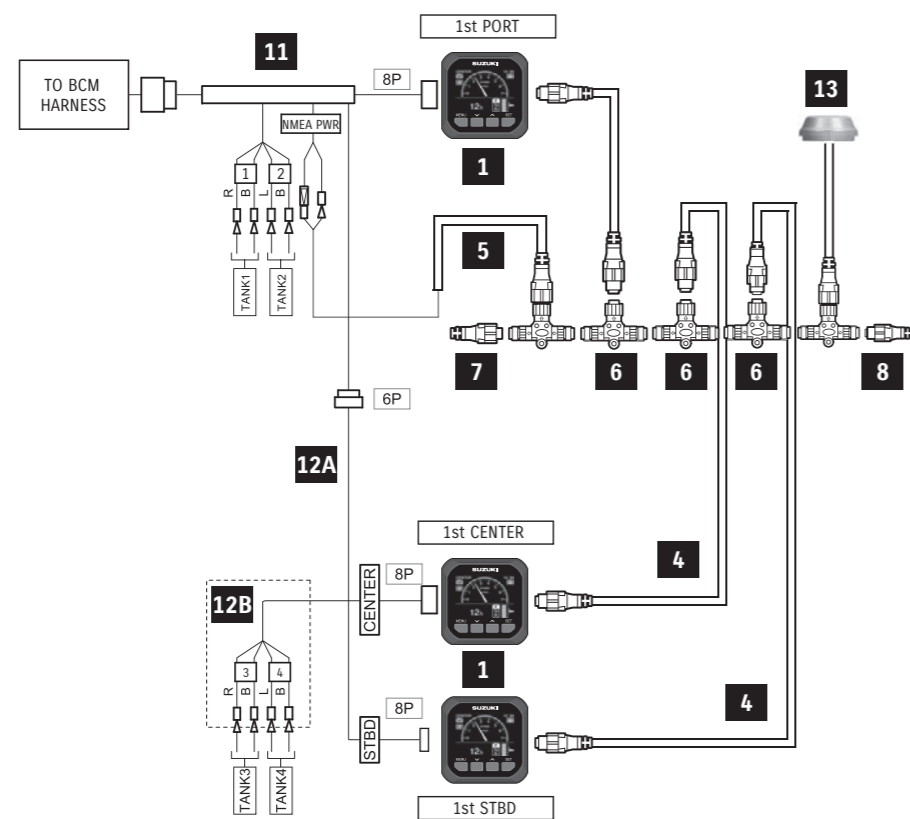
### Optional Component list

4	36662-88L20-000 WIRE COMP, EXTENSION	1.8m
9	36662-88L30-000 WIRE COMP, EXTENSION	4.7m
	36662-88L00-000 WIRE COMP, EXTENSION	7.6m
12B	36667-96L30-000 WIRE COMP, GAUGE ADAPTER (FOR TANK3-4)	
13A	34190-88L00-000 SENSOR ASSY, PADDLE WHEEL	
13B	39950-88L02-000 GPS RECEIVER MODULE	
14	36667-96L11-000 WIRE COMP, GAUGE ADAPTER	

### Component Parts



## SUZUKI MULTI-FUNCTION GAUGE for SUZUKI PRECISION CONTROL TRIPLE



## TOTAL REQUIREMENT LIST

SUZUKI MULTI-FUNCTION GAUGE for SUZUKI PRECISION CONTROL (S.P.C) TRIPLE		Total Required Quantity					
PART NUMBER	PART NAME	SINGLE STATION	SINGLE STATION (Using Water Speed)	SINGLE STATION (Using GPS module)	DUAL STATION	DUAL STATION (Using Water Speed)	DUAL STATION (Using GPS module)
34000-96L73-000	GAUGE KIT	1	1	1	1	1	1
34002-96L13-000	DUAL STATION KIT	-	-	-	1	1	1
1	34011-96L13-000 GAUGE ASSY, MULTI	1	1	1	3	3	3
4	36662-88L10-000 WIRE COMP, EXTENSION	1	1	1	3	3	3
6	36664-88L00-000 CONNECTOR COMP, BRANCH	1	1	1	3	3	3
9	36662-88L30-000 WIRE COMP, EXTENSION	-	-	-	1	1	1
13A	34190-88L00-000 SENSOR ASSY, PADDLE WHEEL	-	1	-	-	1	-
13B	39950-88L02-000 GPS RECEIVER MODULE	-	-	1	-	-	1
14	36667-96L11-000 WIRE COMP, GAUGE ADAPTER	-	-	-	2	2	2
15	36665-96L00-000 ADAPTER COMP, DUAL STATION	-	-	-	1	1	1

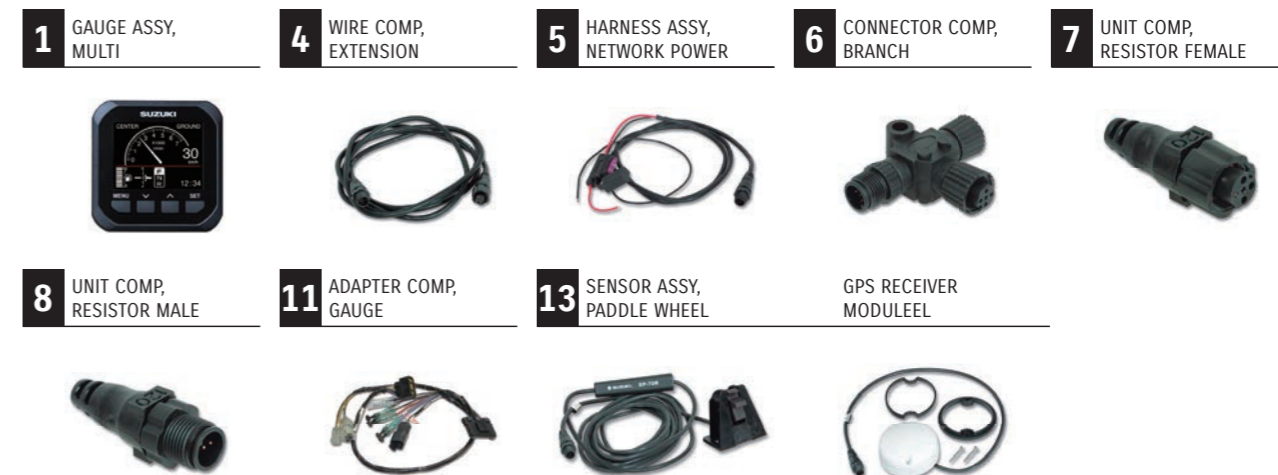
## COMPONENT LIST

KIT COMPONENT			KIT	
PART NUMBER	PART NAME	LENGTH	A. GAUGE KIT 34000-96L73-000	B. DUAL STATION KIT 34002-96L13-000
1	34011-96L13-000 GAUGE ASSY, MULTI	-	2	1
3	36682-92E00-000 WIRE COMP, GAUGE EXT	6.4m	-	1
4	36662-88L10-000 WIRE COMP, EXTENSION	0.6m	2	1
5	36663-88L00-000 HARNESS ASSY, NETWORK POWER	-	1	-
6	36664-88L00-000 CONNECTOR COMP, BRANCH	-	2	1
7	36665-88L00-000 UNIT COMP, RESISTOR FEMALE	-	1	-
8	36665-88L10-000 UNIT COMP, RESISTOR MALE	-	1	-
10	36666-96L00-000 ADAPTER, GAUGE POWER	-	-	1
11	36661-96L20-000 ADAPTER COMP, GAUGE	-	1	-
12A	36667-96L00-000 WIRE COMP, GAUGE ADAPTER	-	1	-
15	36665-96L00-000 ADAPTER COMP, DUAL STATION	-	-	1

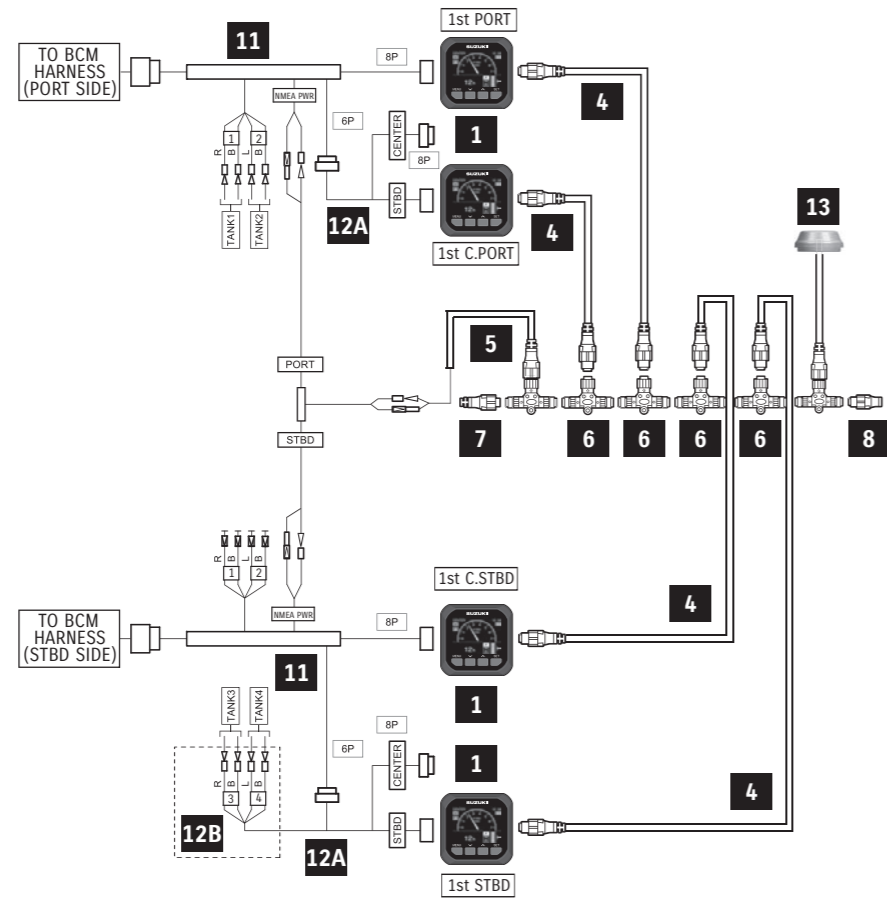
## Optional Component list

4	36662-88L20-000 WIRE COMP, EXTENSION	1.8m
9	36662-88L30-000 WIRE COMP, EXTENSION	4.7m
9	36662-88L00-000 WIRE COMP, EXTENSION	7.6m
12B	36667-96L30-000 WIRE COMP, GAUGE ADAPTER (FOR TANK3-4)	
13A	34190-88L00-000 SENSOR ASSY, PADDLE WHEEL	
13B	39950-88L02-000 GPS RECEIVER MODULE	
14	36667-96L11-000 WIRE COMP, GAUGE ADAPTER	

## Component Parts



## SUZUKI MULTI-FUNCTION GAUGE for SUZUKI PRECISION CONTROL QUADRUPLE



## TOTAL REQUIREMENT LIST

SUZUKI MULTI-FUNCTION GAUGE for SUZUKI PRECISION CONTROL (S.P.C) QUADRUPLE		Total Required Quantity					
PART NUMBER	PART NAME	SINGLE STATION	SINGLE STATION (Using Water Speed)	SINGLE STATION (Using GPS module)	DUAL STATION	DUAL STATION (Using Water Speed)	DUAL STATION (Using GPS module)
34000-96L73-000	GAUGE KIT	1	1	1	1	1	1
34002-96L13-000	DUAL STATION KIT	-	-	-	1	1	1
1	34011-96L13-000 GAUGE ASSY, MULTI	2	2	2	5	5	5
2	36665-87L10-000 ADAPTER, GAUGE FOR MULTI	1	1	1	1	1	1
3	36682-92E00-000 WIRE COMP, GAUGE EXT	-	-	-	1	1	1
4	36662-88L10-000 WIRE COMP, EXTENSION	2	2	2	5	5	5
6	36664-88L00-000 CONNECTOR COMP, BRANCH	2	2	2	5	5	5
9	36662-88L30-000 WIRE COMP, EXTENSION	-	-	-	1	1	1
11	36661-96L20-000 ADAPTER COMP, GAUGE	1	1	1	1	1	1
12A	36667-96L00-000 WIRE COMP, GAUGE ADAPTER	1	1	1	1	1	1
13A	34190-88L00-000 SENSOR ASSY, PADDLE WHEEL	-	1	-	-	1	-
13B	39950-88L02-000 GPS RECEIVER MODULE	-	-	1	-	-	1
15	36665-96L00-000 ADAPTER COMP, DUAL STATION	-	-	-	1	1	1

## COMPONENT LIST

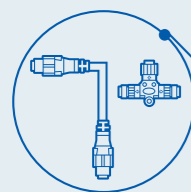
KIT COMPONENT	PART NUMBER	PART NAME	LENGTH	KIT	
				GAUGE KIT 34000-96L73-000	DUAL STATION KIT 34002-96L13-000
1	34011-96L13-000	GAUGE ASSY, MULTI	-	2	1
3	36682-92E00-000	WIRE COMP, GAUGE EXT	6.4m	-	1
4	36662-88L10-000	WIRE COMP, EXTENSION	0.6m	2	1
5	36663-88L00-000	HARNESS ASSY, NETWORK POWER	-	1	-
6	36664-88L00-000	CONNECTOR COMP, BRANCH	-	2	1
7	36665-88L00-000	UNIT COMP, RESISTOR FEMALE	-	1	-
8	36665-88L10-000	UNIT COMP, RESISTOR MALE	-	1	-
10	36666-96L00-000	ADAPTER, GAUGE POWER	-	-	1
11	36661-96L20-000	ADAPTER COMP, GAUGE	-	1	-
12A	36667-96L00-000	WIRE COMP, GAUGE ADAPTER	-	1	-
15	36665-96L00-000	ADAPTER COMP, DUAL STATION	-	-	1

### Optional Component list

2	36665-87L10-000	ADAPTER, GAUGE FOR MULTI	
4	36662-88L20-000	WIRE COMP, EXTENSION	1.8m
9	36662-88L30-000	WIRE COMP, EXTENSION	4.7m
9	36662-88L00-000	WIRE COMP, EXTENSION	7.6m
12B	36667-96L30-000	WIRE COMP, GAUGE ADAPTER (FOR TANK3-4)	
13A	34190-88L00-000	SENSOR ASSY, PADDLE WHEEL	
13B	39950-88L02-000	GPS RECEIVER MODULE	

### Component Parts





## POWER CABLE

### GAUGE ADAPTER



36661-96L30-000

36661-96L20-000

### GAUGE ADAPTER



36665-87L10-000

For using multiple SMFGs

36665-96L00-000

DUAL STATION ADAPTER

### DUAL GAUGE ADAPTER WIRE

36667-96L00-000

36667-96L30-000

(For Tank 3-4)

### GAUGE ADAPTER WIRE

36667-96L11-000

### GAUGE EXTENSION WIRE

36667-96L20-000

### GAUGE EXT WIRE

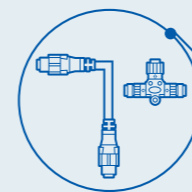


36682-92E00-000

6.4m

36666-96L00-000

GAUGE POWER ADAPTER



## CONNECTION HARDWARE

NMEA2000® compatible sensors or other devices are able to use by the use of T-connectors throughout the system.

### EXTENSION CABLE



36662-88L10-000

0.6 meters

36662-88L20-000

1.8 meters

36662-88L30-000

4.6 meters

36662-88L00-000

7.6 meters

### POWER CABLE WITH T-CONNECTOR



36663-88L00-000

The fused (3A) lead connects the extension cable to the power source.

### T-CONNECTOR



36664-88L00-000

T-connectors link all compatible cables, data and sensor devices, and can be easily secured.

### TERMINATOR FEMALE



36665-88L00-000

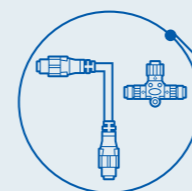
120-ohm terminators are required for any open cable ends in the system.

### TERMINATOR MALE



36665-88L10-000

T-connectors link all compatible cables, data and sensor devices, and can be easily secured.



## SENSORS

### SPEED SENSOR WITH T-CONNECTOR



34190-88L00-000

Paddle wheel-type speed sensor. 10ft cable.

### GPS RECEIVER MODULE WITH T-CONNECTOR



39950-88L02-000

Displays the accurate location and speed on Multi-Function Gauges.

# SUZUKI KEYLESS START SYSTEM

## HIGH SECURITY

- Suzuki original engine starting system features an immobilizer function for added peace of mind. IC access codes installed in the key-fob and engine must match for the engine to start. This prevents starting the engine with the wrong key making the system a good theft deterrent as well.



## EASY OPERATION

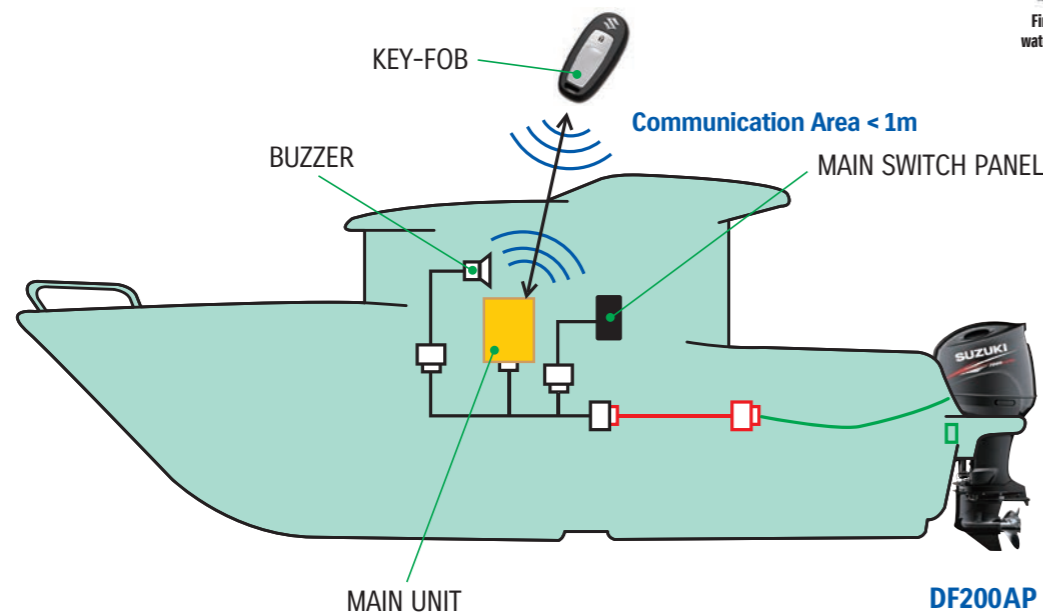
- Suzuki original engine starting system offers a variety of functions. The key-fob is easy to carry and one is all you need to enjoy stress-free starts for greater boating pleasure.
- One step ahead of the competition, the Suzuki Keyless Start System requires no mechanical key so the key-fob remains safely in your pocket.

## WATERPROOF FLOAT KEY-FOB

- The easy to carry key-fob remains safely in your pocket reducing risk of a lost key. The key-fob is waterproof and floats so should it ever go overboard it is retrievable.



Find out more by watching our videos

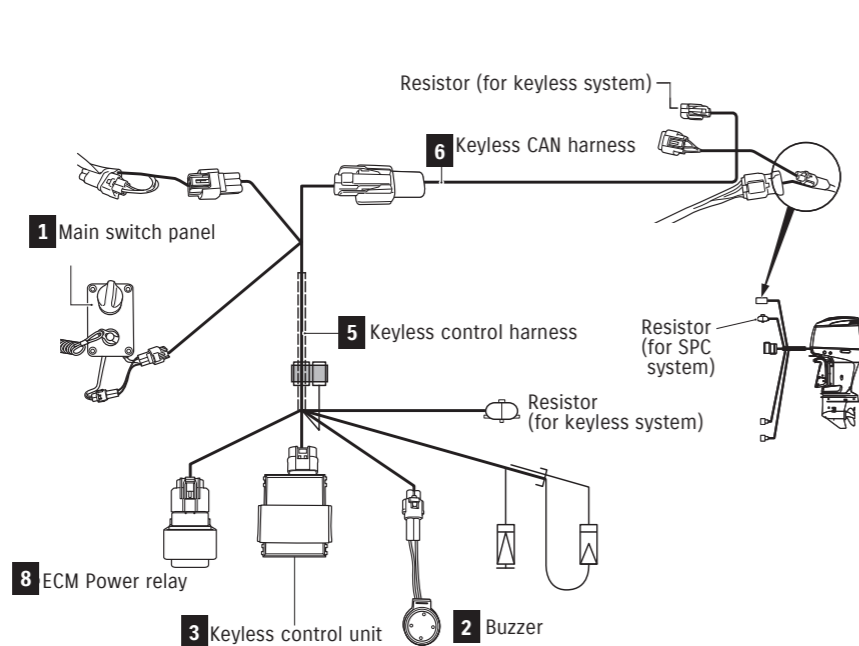


## Basic Component

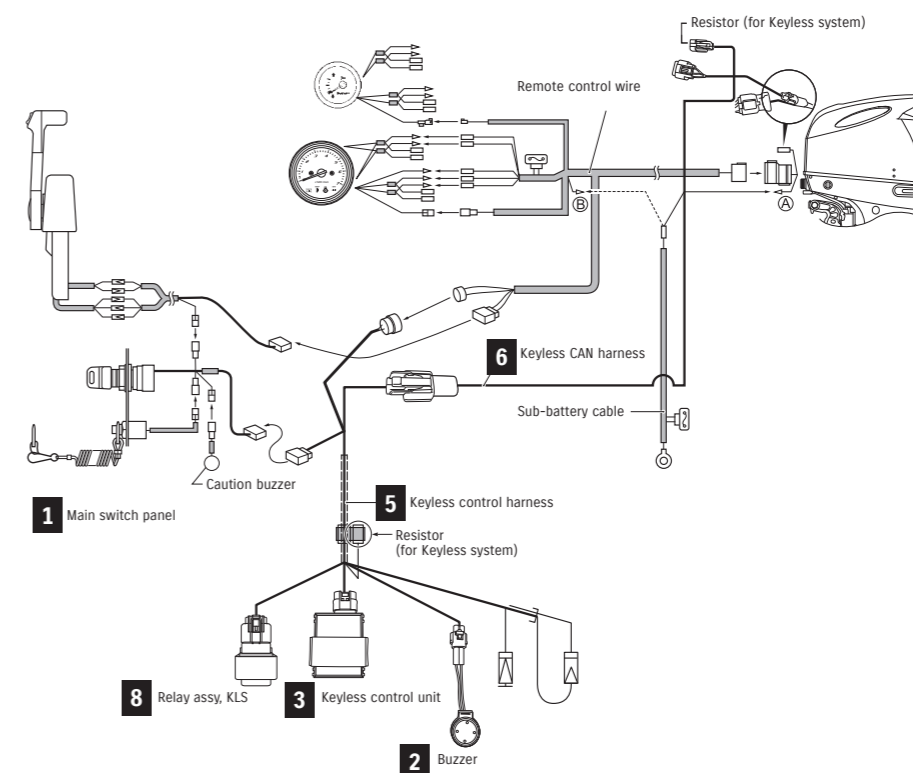


Refer to the next page for details

## SUZUKI KEYLESS START SYSTEM for SUZUKI PRECISION CONTROL (S.P.C)



## SUZUKI KEYLESS START SYSTEM for MECHANICAL REMOTE CONTROL SYSTEM

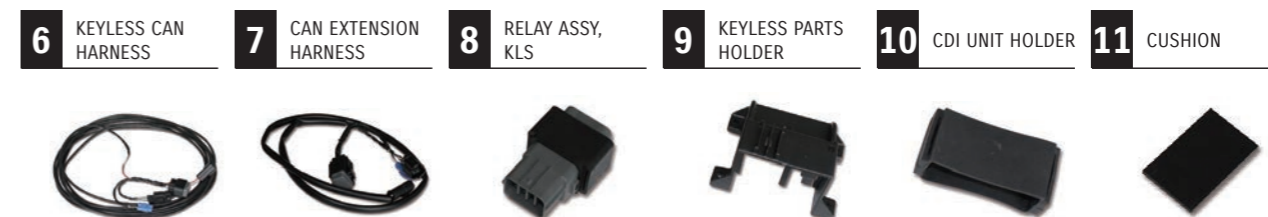


### Basic Component



SUZUKI KEYLESS START SYSTEM for SUZUKI PRECISION CONTROL (S.P.C)				KIT		Total Required Quantity			
				CONTROLLER SET	HARNESS SET	SINGLE	DUAL	TRIPLE	QUAD
PART NUMBER	PART NAME	LENGTH	37170-96L04	37105-96L02					
1	37100-96L01-000	MAIN SWITCH PANEL	-	-	1	1	1	1	
2	38500-93J90-000	BUZZER	-	-	1	1	1	1	
3	37171-96L02-000 37171-96L12-000	KEYLESS CONTROL UNIT	-	1	1	1	1	1	
4	37172-96L01-000 37172-96L10-000	KEYLESS FOB	-	2	2	2	2	2	
5	36623-96L01-000	KEYLESS CONTROL HARNESS	-	1	1	1	1	1	
6	36662-96L00-000	KEYLESS CAN HARNESS	6.5	1	1	1	1	1	
7	36664-96L00-000	CAN EXTENSION HARNESS	0.8	-	-	1	2	3	
8	38860-96L01-000	RELAY ASSY, KLS	-	1	1	1	1	1	
9	37173-96L10-000	HOLDER, KLS PARTS	-	1	1	1	1	1	
10	32980-38F00-000	HOLDER, CDI UNIT	-	1	1	1	1	1	
11	32851-93J00-000	CUSHION	-	1	1	1	1	1	
-	09407-14407-000	CLAMP, KLS HARNESS	-	1	1	1	1	1	
-	37117-96L00-000	DECAL, KLS	-	2	-	-	-	-	

■ 37170-96L04 (433.92MHz) or 37170-96L14 (315MHz)



SUZUKI KEYLESS START SYSTEM for MECHANICAL REMOTE CONTROL SYSTEM				KIT		Total Required Quantity	
				CONTROLLER SET	HARNESS SET	SINGLE	DUAL
PART NUMBER	PART NAME	LENGTH	37170-96L04	37105-96L10			
1	37100-96L11-000	MAIN SWITCH PANEL	-	-	1	-	
	37100-96L21-000		-	-	-	1	
2	38500-93J90-000	BUZZER	-	1	1	1	
3	37171-96L02-000 37171-96L12-000	KEYLESS CONTROL UNIT	-	1	-	1	
4	37172-96L01-000 37172-96L10-000	KEYLESS FOB	-	2	-	2	
5	36623-96L10-000	KEYLESS CONTROL HARNESS	-	1	-	1	
6	36662-96L10-000	KEYLESS CAN HARNESS	6.5	1	-	1	
7	36664-96L00-000	CAN EXTENSION HARNESS	0.8	-	-	1	
8	38860-96L01-000	RELAY ASSY, KLS	-	1	-	1	
9	37173-96L10-000	HOLDER, KLS PARTS	-	1	-	1	
12	36621-96L00-000	HARNESS ASSY, DUAL KLS ENG	-	-	-	1	
13	36663-96L10-000	WIRE COMP, KLS CAN EXT	2.0	-	-	1	
10	32980-38F00-000	HOLDER, CDI UNIT	-	1	-	1	
11	32851-93J00-000	CUSHION	-	1	-	1	
-	37117-96L00-000	DECAL, KLS	-	2	-	-	

■ 37170-96L04 (433.92MHz) or 37170-96L14 (315MHz)

**Caution lamp** Caution type  
**CHECK ENGINE** Low battery-voltage or Other cautions on S.D.S  
**TEMP** Overheat ( Over-revolution )

**Caution lamp** Caution type  
**OIL** Low oil-pressure ( Over-revolution )  
**Oil change reminder**  
**REV LIMIT** Over-revolution

## TACHOMETER



White



Black



White



Black



White



Black

**34200-93J14-000** (White)

**34200-93J02-000** (Black)

Gauge Size 4"

Applicable Model DF25A-250

Caution system alert with a monitor lamp lighting on when an abnormal engine condition occurs. Refer to SERVICE MANUAL for the detail.

**34200-93J53-000** (White)

**34200-93J42-000** (Black)

Gauge Size 4"

Applicable Model DF40A-200A

Exclusive for SUZUKI Troll Mode System. Automatically switches to low RPM scale when the SUZUKI Troll Mode System is activated.

**34200-93J34-000** (White)

**34200-93J22-000** (Black)

Gauge Size 4"

Applicable Model DF8A-20A, DT30/40W

Full-scale 7000-RPM TACHOMETER can be used on electric-start models by using 4, 6 or 12 pole switch on rear of meter.

## SPEEDOMETER



White



Black



White



Black

**34100-93J13-000** (White)

**34100-93J02-000** (Black)

Gauge Size 4"

Maximum Speed 130km/h, 80mph

Bourdon-tube type speedometer with readings in km/h and mph. Includes vinyl tube, hardware and installation manual.

**34100-93J33-000** (White)

**34100-93J22-000** (Black)

Gauge Size 4"

Maximum Speed 80km/h, 50mph

Bourdon-tube type speedometer with readings in km/h and mph. Includes vinyl tube, hardware and installation manual.

## TRIM GAUGE



White



Black

**34800-93J13-000** (White)

**34800-93J02-000** (Black)

Gauge Size 2"

Applicable Model DF25A-250

Magnetic-type gauge shows trim angle for optimum performance and efficiency.

## FUEL GAUGE



White



Black

**34300-93J13-000** (White)

**34300-93J03-000** (Black)

Gauge Size 2"

FUEL GAUGE alone works with the US Standard 2500 sending unit. Use the 1500 adaptor to connect the gauge to a European standard sending unit.

## HOUR METER



White



Black

**34500-93J13-000** (White)

**34500-93J02-000** (Black)

Gauge Size 2"

Applicable Model DF8A-250, DT30/40

12-Volt-electric-motor driven meter indicates hours that your SUZUKI OUTBOARD MOTOR has been operated in order for you to know when each periodic service is required.

## VOLTMETER



White



Black

**34600-93J13-000** (White)

**34600-93J02-000** (Black)

Gauge Size 2"

Applicable Model DF8A-250, DT30/40

To help your SUZUKI OUTBOARD MOTOR run at its best, monitor the charging system functioning with a VOLTMETER.

## WATER-PRESSURE GAUGE



White



Black

**34650-93J33-000** (White)

**34650-93J22-000** (Black)

Gauge Size 2"

Applicable Model DF40A-250

Bourdon-tube type gauge measures cooling-water pressure. Select an appropriate INSTALLATION KIT for each model.

## SPEEDOMETER SENDER ASSY



34190-95500-000



34190-87D00-000

## INSTALLATION KIT for WATER-PRESSURE GAUGE



**34660-90J02-000**

Applicable Model DF40A-140A

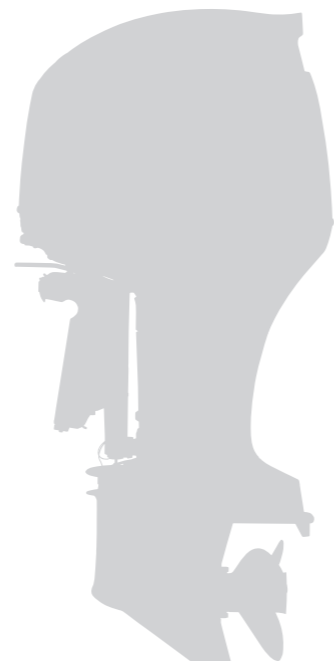
**34660-93J00-000**

Applicable Model DF200-250

KIT includes fittings and hoses needed for motor to gauge connection.

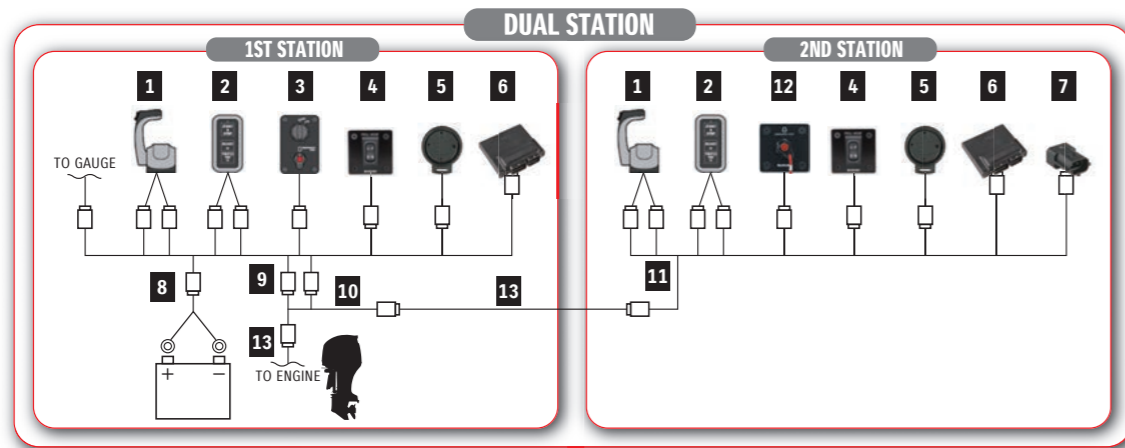
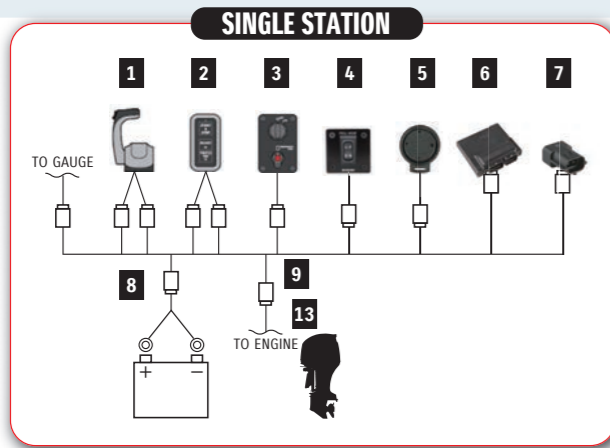
**34660-96J00-000**

Applicable Model DF150-175/200A





## REMOTE-CONTROL KIT for SINGLE ENGINE



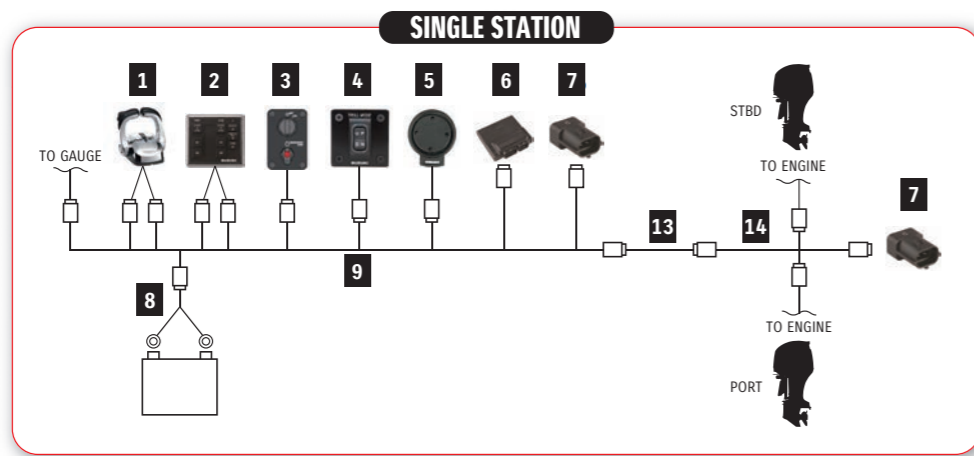
REMOTE-CONTROL KIT for SINGLE ENGINE				KIT				Total Required Quantity	
PART NUMBER	PART NAME	LENGTH	1st Station		2nd Station		SINGLE STATION	DUAL STATION	
			67000-98JE4-000	67000-98JM2-000	67000-98JE4-000	67000-98JL4-000			
1	67200-98J04-000 BINNACLE MOUNT R/C BOX		1	-	1	-	1	2	
	67200-98J23-000 FLUSH MOUNT R/C BOX		-	1	-	1	1	1	
2	37100-98J11-000 CONTROL PANEL		1	1	1	1	1	2	
3	37100-98J05-000 MAIN SWITCH PANEL		1	1	-	-	1	1	
4	37860-87L00-000 TROLL MODE SWITCH PANEL		1	1	1	1	1	2	
5	38500-93J90-000 WARNING BUZZER		1	1	1	1	1	2	
	09407-08401-000 WARNING BUZZER CLAMP		1	1	1	1	1	2	
6	36770-98J13-000 BOAT CONTROL MODULE		1	1	1	1	1	2	
	36775-98J00-000 BCM HOLDER (L)		1	1	1	1	1	2	
	36776-98J00-000 BCM HOLDER (R)		1	1	1	1	1	2	
	33911-88B10-000 BCM-CONNECT CAP		1	1	1	1	1	2	
	33925-93J00-000 BCM CUSHION		1	1	1	1	1	2	
7	33926-98J00-000 TERMINAL RESISTOR		2	2	-	-	2	2	
8	36625-98J10-000 BATTERY-LEAD		1	1	-	-	1	1	
9	36623-98J20-000 BCM #1 WIRING HARNESS		1	1	-	-	1	1	
10	36622-98J00-000 DUAL-STATION WIRING HARNESS		-	-	1	1	-	1	
11	36624-98J02-000 BCM #2 WIRING HARNESS		-	-	1	1	-	1	
12	38500-93J90-000 EMERGENCY SWITCH PANEL		-	-	1	1	-	1	
-	09403-13402-000 HARNESS CLAMP		10	10	10	10	-	-	
	36620-98J31-000 MAIN WIRING HARNESS	6.5m	-	-	-	-	1	2	
*13	36620-98J41-000 MAIN WIRING HARNESS EXTENSION	9.5m	-	-	-	-	-	-	
	36620-98J51-000 MAIN WIRING HARNESS EXTENSION	2.0m	-	-	-	-	-	-	

\*13 is not included in these kits.  
Please purchase these items separately.

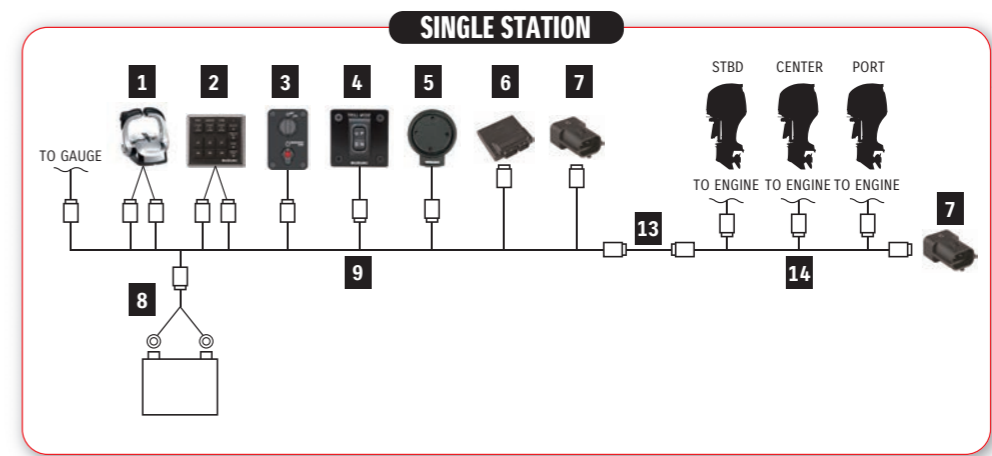
### Basic Component

<b>1</b> R/C BOX BINNACLE MOUNT R/C BOX FLUSH MOUNT R/C BOX	<b>2</b> CONTROL PANEL
<b>3</b> MAIN SWITCH PANEL (for KEYLESS START SYSTEM)	<b>4</b> TROLL MODE SWITCH PANEL
<b>5</b> BUZZER	
<b>6</b> BOAT CONTROL MODULE	BCM HOLDER (L) BCM HOLDER (R)
	BCM CONNECT CAP
	BCM CUSHION
<b>7</b> TERMINAL RESISTOR	<b>8</b> BATTERY-LEAD
	<b>9</b> BCM #1 WIRING HARNESS
	<b>10</b> DUAL-STATION WIRING HARNESS
<b>11</b> BCM #2 WIRING HARNESS	<b>12</b> EMERGENCY SWITCH PANEL
	<b>13</b> MAIN WIRING HARNESS
	MAIN WIRING HARNESS EXTENSION

## REMOTE-CONTROL KIT for DUAL ENGINE



## REMOTE-CONTROL KIT for TRIPLE ENGINE



### Installation Parts Different from SINGLE ENGINE

- 1** R/C BOX  
BINNACLE MOUNT R/C BOX
- 2** CONTROL PANEL
- 12** EMERGENCY SWITCH  
PANEL
- 14** ENGINE WIRING  
HARNESS



### Installation Parts Different from SINGLE ENGINE

- 1** R/C BOX  
BINNACLE MOUNT R/C BOX
- 2** CONTROL PANEL
- 12** EMERGENCY SWITCH  
PANEL
- 14** ENGINE WIRING  
HARNESS



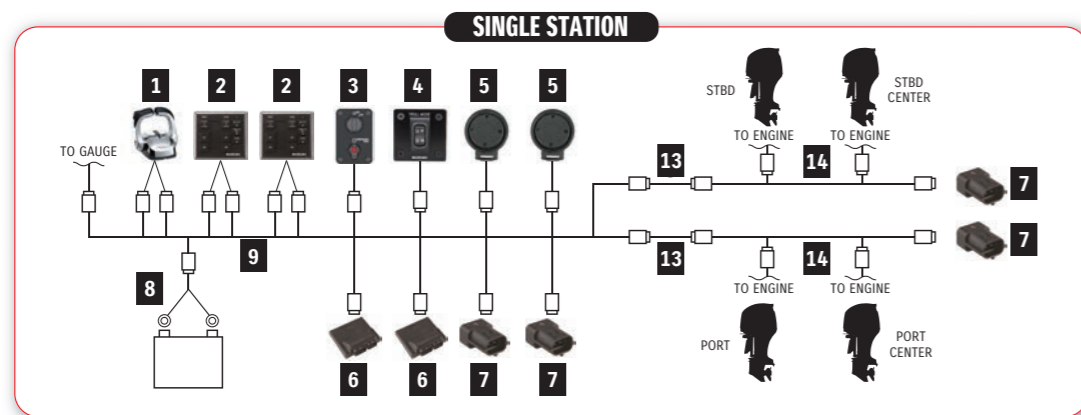
REMOTE-CONTROL KIT for DUAL ENGINE				KIT		Total Required Quantity	
				1st Station	2nd Station		
PART NUMBER	PART NAME	LENGTH	67000-98JG4-000	67000-98JH4-000	SINGLE STATION	DUAL STATION	
			BINNACLE-MOUNT CONTROL KIT	2ND-STATION BINNACLE-MOUNT CONTROL KIT			
<b>1</b>	67200-98J14-000	BINNACLE MOUNT R/C BOX	1	1	1	2	
<b>2</b>	37100-98J21-000	CONTROL PANEL	1	1	1	2	
<b>3</b>	37100-98J05-000	MAIN SWITCH PANEL	1	-	1	1	
<b>4</b>	37860-87L00-000	TROLL MODE SWITCH PANEL	1	1	1	2	
<b>5</b>	38500-93J90-000	WARNING BUZZER	1	1	1	2	
	09407-08401-000	WARNING BUZZER CLAMP	1	1	1	2	
<b>6</b>	36770-98J13-000	BOAT CONTROL MODULE	1	1	1	2	
	36775-98J00-000	BCM HOLDER (L)	1	1	1	2	
	36776-98J00-000	BCM HOLDER (R)	1	1	1	2	
	33925-93J00-000	BCM CUSHION	1	1	1	2	
<b>7</b>	33926-98J00-000	TERMINAL RESISTOR	2	-	2	2	
<b>8</b>	36625-98J10-000	BATTERY-LEAD	1	-	1	1	
<b>9</b>	36623-98J30-000	BCM #1 WIRING HARNESS	1	-	1	1	
<b>10</b>	36622-98J00-000	DUAL-STATION WIRING HARNESS	-	1	-	1	
<b>11</b>	36624-98J11-000	BCM #2 WIRING HARNESS	-	1	-	1	
<b>12</b>	37803-93J05-000	EMERGENCY SWITCH PANEL	-	1	-	1	
<b>14</b>	36621-98J00-000	ENGINE WIRING HARNESS	1	-	1	1	
-	09403-13402-000	HARNESS CLAMP	15	10	-	-	
<b>*13</b>	36620-98J31-000	MAIN WIRING HARNESS	6.5m	-	1	2	
	36620-98J41-000	MAIN WIRING HARNESS EXTENSION	9.5m	-	-	-	
	36620-98J51-000	MAIN WIRING HARNESS EXTENSION	2.0m	-	-	-	
-	36612-98J20-000	CONNECTOR, COUNTER SELECT	-	-	1	1	

\*13 is not included in these kits. Please purchase these items separately.

REMOTE-CONTROL KIT for TRIPLE ENGINE				KIT		Total Required Quantity	
				1st Station	2nd Station		
PART NUMBER	PART NAME	LENGTH	67000-98JJ4-000	67000-98JK4-000	SINGLE STATION	DUAL STATION	
			BINNACLE-MOUNT CONTROL KIT	2ND-STATION BINNACLE-MOUNT CONTROL KIT			
<b>1</b>	67200-98J14-000	BINNACLE MOUNT R/C BOX	1	1	1	2	
<b>2</b>	37100-98J31-000	CONTROL PANEL	1	1	1	2	
<b>3</b>	37100-98J05-000	MAIN SWITCH PANEL	1	-	1	1	
<b>4</b>	37860-87L00-000	TROLL MODE SWITCH PANEL	1	1	1	2	
<b>5</b>	38500-93J90-000	WARNING BUZZER	1	1	1	2	
	09407-08401-000	WARNING BUZZER CLAMP	1	1	1	2	
<b>6</b>	36770-98J13-000	BOAT CONTROL MODULE	1	1	1	2	
	36775-98J00-000	BCM HOLDER (L)	1	1	1	2	
	36776-98J00-000	BCM HOLDER (R)	1	1	1	2	
	33925-93J00-000	BCM CUSHION	1	1	1	2	
<b>7</b>	33926-98J00-000	TERMINAL RESISTOR	2	-	1	2	
<b>8</b>	36625-98J10-000	BATTERY-LEAD	1	1	2	2	
<b>9</b>	36623-98J30-000	BCM #1 WIRING HARNESS	1	-	1	1	
<b>10</b>	36622-98J00-000	DUAL-STATION WIRING HARNESS	-	1	1	1	
<b>11</b>	36624-98J11-000	BCM #2 WIRING HARNESS	-	1	-	1	
<b>12</b>	37803-93J05-000	EMERGENCY SWITCH PANEL	-	1	-	1	
<b>14</b>	36621-98J10-000	ENGINE WIRING HARNESS	1	-	-	1	
-	09403-13402-000	HARNESS CLAMP	18	10	-	-	
<b>*13</b>	36620-98J31-000	MAIN WIRING HARNESS	6.5m	-	1	2	
	36620-98J41-000	MAIN WIRING HARNESS EXTENSION	9.5m	-	-	-	
	36620-98J51-000	MAIN WIRING HARNESS EXTENSION	2.0m	-	-	-	
-	36612-98J20-000	CONNECTOR, COUNTER SELECT	-	-	1	1	

\*13 is not included in these kits. Please purchase these items separately.

## REMOTE-CONTROL KIT for QUADRUPLE ENGINE



### Installation Parts Different from SINGLE ENGINE

- 1** R/C BOX  
BINNACLE MOUNT R/C BOX
- 2** CONTROL PANEL
- 12** EMERGENCY SWITCH PANEL
- 14** ENGINE WIRING HARNESS



REMOTE-CONTROL KIT for QUADRUPLE ENGINE				KIT		Total Required Quantity	
PART NUMBER	PART NAME	LENGTH	1st Station	2nd Station	SINGLE STATION	DUAL STATION	
			67000-98J75-000	67000-98J85-000			
<b>1</b>	67200-98J14-000	BINNACLE MOUNT R/C BOX	1	1	1	2	
<b>2</b>	37100-98J21-000	CONTROL PANEL	2	2	2	4	
<b>3</b>	37100-98J05-000	MAIN SWITCH PANEL	1	-	1	1	
<b>4</b>	37860-87L00-000	TROLL MODE SWITCH PANEL	1	1	1	2	
<b>5</b>	38500-93J90-000	WARNING BUZZER	2	2	2	4	
	09407-08401-000	WARNING BUZZER CLAMP	2	2	2	4	
	36770-98J22-000	BOAT CONTROL MODULE	2	2	2	4	
<b>6</b>	36775-98J00-000	BCM HOLDER (L)	2	2	2	4	
	36776-98J00-000	BCM HOLDER (R)	2	2	2	4	
	33925-93J00-000	BCM CUSHION	2	2	2	4	
<b>7</b>	33926-98J00-000	TERMINAL RESISTOR	4	-	4	4	
<b>8</b>	36625-98J10-000	BATTERY-LEAD	2	-	2	2	
<b>9</b>	36623-98J40-000	BCM #1 WIRING HARNESS	1	1	1	1	
<b>10</b>	36622-98J00-000	DUAL-STATION WIRING HARNESS	-	2	-	2	
<b>12</b>	37803-93J05-000	EMERGENCY SWITCH PANEL	-	1	-	1	
<b>14</b>	36621-98J00-000	ENGINE WIRING HARNESS	2	-	2	2	
-	09403-13402-000	HARNESS CLAMP	20	15	-	-	
	36620-98J31-000	MAIN WIRING HARNESS	6.5m	-	2	4	
<b>*13</b>	36620-98J41-000	MAIN WIRING HARNESS EXTENSION	9.5m	-	-	-	
	36620-98J51-000	MAIN WIRING HARNESS EXTENSION	2.0m	-	-	-	
-	36612-98J20-000	CONNECTOR, COUNTER SELECT	2	-	2	2	

\*13 is not included in these kits. Please purchase these items separately.

## EXTRA OPTIONS AND INFORMATION

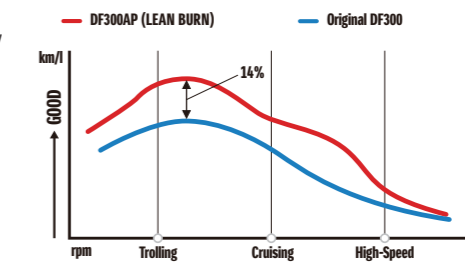
### Lean Burn Fuel Control Technology

#### LEAN BURN

Fuel efficiency matters whether you're boating for pleasure or profit. Our Lean Burn Fuel Control Technology combined with Suzuki Precision Control, delivers the optimum fuel/air mixture to the engine. The system is designed to save fuel both at low speeds and up into the cruising range.



#### COMPARISON OF FUEL ECONOMY



Uses 14% less fuel compared to the original DF300, mainly in the cruising range where the engine is used a majority of the time.

Data used in the graph was obtained through in-house testing under uniformed conditions. Results will vary depending upon operating conditions (boat design, size, weight, weather, etc.)

### COUNTER SELECT CONNECTOR



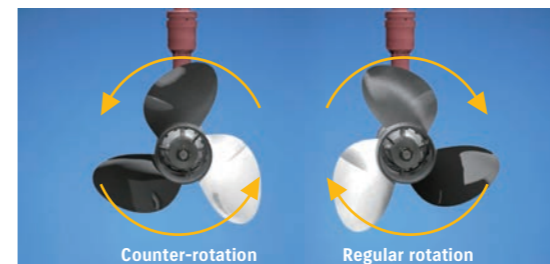
#### 36612-98J20-000

Applicable Model DF150AP/175AP  
DF200AP/250AP/300AP  
Converts to counter rotation specification.

### Suzuki Selective Rotation

In multi-outboard installations on large boats, a counter-rotation outboard is usually paired with a regular rotation model to help keep the boat traveling on an even keel and in a straight line. AP Models are built with special counter rotating gearing in the lower unit, which causes the prop to rotate in the opposite direction. Suzuki Selective Rotation eliminates the need to purchase a dedicated counter-rotation outboard by using a special switch that when connected to a circuit inside of the engine compartment, turns a regular rotation outboard into a counter-rotation model with a counter rotational propeller.\* This industry first is made possible through a special, unified design of gears, shaft, and bearings in the lower unit that are designed to operate reliably and efficiently in either regular or counter-rotation directions.

\* Make sure you consult with your dealer before changing Regular Rotation to Counter Rotation (or vice versa).



### TROLL MODE SWITCH PANEL



#### 37860-87L00-000

Applicable Model DF40A-140A/150AP/  
175AP/200A/AP/250AP/  
300AP/350A

Activates SUZUKI Troll Mode System and controls RPM from idling engine speed up to 1200rpm at every 50rpm.

### SUZUKI TROLL MODE SYSTEM

An optional extra on Remote Control models from over DF40A, this easy-to-use system lets you adjust engine speed in 50rpm increments, giving highly precise control at low revs. With its own tachometer and control switch, it works alongside our multi-function gauges and analogue gauges. (Suzuki Troll Mode System is originally equipped with Tiller Handle models from over DF40A.)

\*Not Applicable for DF150,175,200,225,250



## REMOTE-CONTROL KIT for KEYLESS START SYSTEM

REMOTE-CONTROL KIT for SINGLE ENGINE				KIT		Total Required Quantity
PART NUMBER	PART NAME	LENGTH	Single Station		SINGLE STATION	
			67000-98J95-000	67000-98JCS-000		
1	67200-98J04-000	BINNACLE MOUNT R/C BOX	1	-	1	
	67200-98J23-000	FLUSH MOUNT R/C BOX	-	1	1	
2	37100-98J11-000	CONTROL PANEL	1	1	1	
3	37100-96L01-000	MAIN SWITCH PANEL	1	1	1	
4	37860-87L00-000	TROLL MODE SWITCH PANEL	1	1	1	
5	38500-93J90-000	WARNING BUZZER	1	1	1	
	09407-08401-000	WARNING BUZZER CLAMP	1	1	1	
6	36770-98J13-000	BOAT CONTROL MODULE	1	1	1	
	36775-98J00-000	BCM HOLDER (L)	1	1	1	
	36776-98J00-000	BCM HOLDER (R)	1	1	1	
	33911-88B0-000	BCM-CONNECT CAP	1	1	1	
	33925-93J00-000	BCM CUSHION	1	1	1	
7	33926-98J00-000	TERMINAL RESISTOR	2	2	2	
8	36625-98J10-000	BATTERY-LEAD	1	1	1	
9	36623-98J20-000	BCM #1 WIRING HARNESS	1	1	1	
-	09403-13402-000	HARNESS CLAMP	10	10	-	
	36620-98J31-000	MAIN WIRING HARNESS	-	-	1	
*13	36620-98J41-000	MAIN WIRING HARNESS EXTENSION	-	-	-	
	36620-98J51-000	MAIN WIRING HARNESS EXTENSION	-	-	-	

\*13 is not included in these kits.  
Please purchase these items separately.

REMOTE-CONTROL KIT for TRIPLE ENGINE				KIT		Total Required Quantity
PART NUMBER	PART NAME	LENGTH	1st Station		SINGLE STATION	
			67000-98JB5-000	BINNACLE-MOUNT CONTROL KIT		
1	67200-98J14-000	BINNACLE MOUNT R/C BOX	1	-	1	
2	37100-98J31-000	CONTROL PANEL	1	1	1	
3	37100-96L01-000	MAIN SWITCH PANEL	1	1	1	
4	37860-87L00-000	TROLL MODE SWITCH PANEL	1	1	1	
5	38500-93J90-000	WARNING BUZZER	1	1	1	
	09407-08401-000	WARNING BUZZER CLAMP	1	1	1	
6	36770-98J13-000	BOAT CONTROL MODULE	1	1	1	
	36775-98J00-000	BCM HOLDER (L)	1	1	1	
	36776-98J00-000	BCM HOLDER (R)	1	1	1	
	33925-93J00-000	BCM CUSHION	1	1	1	
7	33926-98J00-000	TERMINAL RESISTOR	2	2	2	
8	36625-98J10-000	BATTERY-LEAD	1	1	2	
9	36623-98J30-000	BCM #1 WIRING HARNESS	1	1	1	
-	36621-98J10-000	ENGINE WIRING HARNESS	1	1	1	
-	09403-13402-000	HARNESS CLAMP	18	18	-	
	36620-98J31-000	MAIN WIRING HARNESS	-	-	1	
*13	36620-98J41-000	MAIN WIRING HARNESS EXTENSION	-	-	-	
	36620-98J51-000	MAIN WIRING HARNESS EXTENSION	-	-	-	
14	36664-96L00-000	HARNESS ASSY, KLS CAN	2	2	2	
-	36612-98J20-000	CONNECTOR, COUNTER SELECT	1	1	1	

\*13 is not included in these kits.  
Please purchase these items separately.

REMOTE-CONTROL KIT for DUAL ENGINE				KIT		Total Required Quantity
PART NUMBER	PART NAME	LENGTH	Single Station		SINGLE STATION	
			67000-98JA5-000	BINNACLE-MOUNT CONTROL KIT		
1	67200-98J14-000	BINNACLE MOUNT R/C BOX	1	-	1	
2	37100-98J21-000	CONTROL PANEL	1	1	1	
3	37100-96L01-000	MAIN SWITCH PANEL	1	1	1	
4	37860-87L00-000	TROLL MODE SWITCH PANEL	1	1	1	
5	38500-93J90-000	WARNING BUZZER	1	1	1	
	09407-08401-000	WARNING BUZZER CLAMP	1	1	1	
6	36770-98J13-000	BOAT CONTROL MODULE	1	1	1	
	36775-98J00-000	BCM HOLDER (L)	1	1	1	
	36776-98J00-000	BCM HOLDER (R)	1	1	1	
	33925-93J00-000	BCM CUSHION	1	1	1	
7	33926-98J00-000	TERMINAL RESISTOR	2	2	2	
8	36625-98J10-000	BATTERY-LEAD	1	1	1	
9	36623-98J30-000	BCM #1 WIRING HARNESS	1	1	1	
-	36621-98J00-000	ENGINE WIRING HARNESS	1	1	1	
-	09403-13402-000	HARNESS CLAMP	15	15	-	
	36620-98J31-000	MAIN WIRING HARNESS	-	-	1	
*13	36620-98J41-000	MAIN WIRING HARNESS EXTENSION	-	-	-	
	36620-98J51-000	MAIN WIRING HARNESS EXTENSION	-	-	-	
14	36664-96L00-000	HARNESS ASSY, KLS CAN	1	1	1	
-	36612-98J20-000	CONNECTOR, COUNTER SELECT	1	1	1	

\*13 is not included in these kits.  
Please purchase these items separately.

REMOTE-CONTROL KIT for QUADRUPL ENGINE				KIT		Total Required Quantity
PART NUMBER	PART NAME	LENGTH	1st Station		SINGLE STATION	
			67000-98JD3-000	BINNACLE-MOUNT CONTROL KIT		
1	67200-98J14-000	BINNACLE MOUNT R/C BOX	1	-	1	
2	37100-98J21-000	CONTROL PANEL	2	2	2	
3	37100-96L01-000	MAIN SWITCH PANEL	1	1	1	
4	37860-87L00-000	TROLL MODE SWITCH PANEL	1	1	1	
5	38500-93J90-000	WARNING BUZZER	2	2	2	
	09407-08401-000	WARNING BUZZER CLAMP	2	2	2	
6	36770-98J22-000	BOAT CONTROL MODULE	2	2	2	
	36775-98J00-000	BCM HOLDER (L)	2	2	2	
	36776-98J00-000	BCM HOLDER (R)	2	2	2	
	33925-93J00-000	BCM CUSHION	2	2	2	
7	33926-98J00-000	TERMINAL RESISTOR	4	4	4	
8	36625-98J10-000	BATTERY-LEAD	2	2	2	
9	36623-98J40-000	BCM #1 WIRING HARNESS	1	1	1	
-	36621-98J00-000	ENGINE WIRING HARNESS	2	2	2	
-	09403-13402-000	HARNESS CLAMP	20	20	-	
	36620-98J31-000	MAIN WIRING HARNESS	-	-	2	
*13	36620-98J41-000	MAIN WIRING HARNESS EXTENSION	-	-	-	
	36620-98J51-000	MAIN WIRING HARNESS EXTENSION	-	-	-	
14	36664-96L00-000	HARNESS ASSY, KLS CAN	3	3	3	
-	36612-98J20-000	CONNECTOR, COUNTER SELECT	2	2	2	

\*13 is not included in these kits.  
Please purchase these items separately.

## MAIN SWITCH PANEL



**37100-98J05-000**  
single ignition with Emergency-stop switch

## BOAT CONTROL PANEL



**37100-98J11-000**  
for Single-Engine



**37100-98J21-000**  
for Dual-Engine, Quadruple-Engine



**37100-98J31-000**  
for Triple-Engine

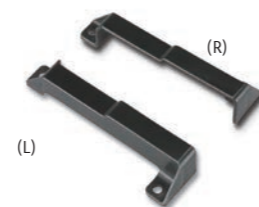
## BOAT CONTROL MODULE (BCM)



**36770-98J13-000**

**36770-98J22-000**  
for Quadruple-Engine

## BCM HOLDER (L/R)



**36775-98J00-000** Holder (L)

**36776-98J00-000** Holder (R)

## BCM-CONNECT CAP



**33911-88BL0-000**

## BCM CUSHION



**33925-93J00-000**

## MAIN WIRING HARNESS



**36620-98J31-000**  
6.5 meters for control system

**36620-98J41-000**  
9.5 meters for control system

## MAIN-WIRING-HARNESS EXTENSION



**36620-98J51-000**  
2.0 meters for control system

## ENGINE WIRING HARNESS



**36621-98J00-000**  
for Dual-Engine

**36621-98J10-000**  
for Triple-Engine

## DUAL-STATION WIRING HARNESS



**36622-98J00-000**  
for Dual-station control system

## BCM #1 WIRING HARNESS



**36623-98J20-000**  
for Single-Engine and Single (First) station

**36623-98J30-000**  
for Dual or Triple-Engine and Single (First) station

**36623-98J40-000**  
for Quadruple-Engine

## BCM #2 WIRING HARNESS



**36624-98J02-000**  
for Single-Engine and Second station

**36624-98J11-000**  
for Dual or Triple-Engine and Second station

**36623-98J40-000**  
for Quadruple-Engine and Second station

## HARNESS EXTENSION



**36627-98J00-000**  
1 meters

## BATTERY LEAD



**36625-98J10-000**  
6.5 meters

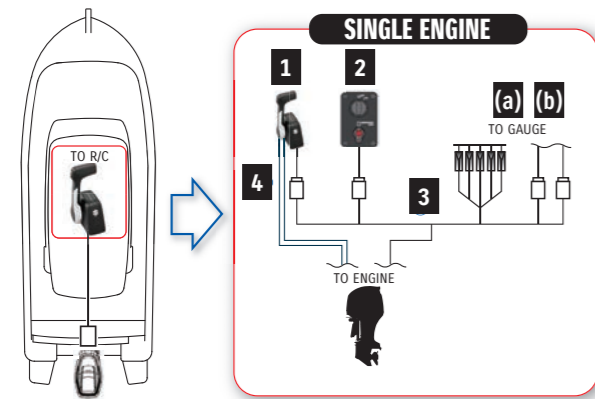
## TERMINAL RESISTOR



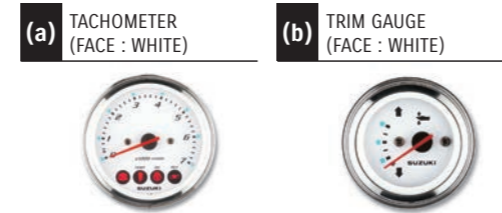
**33926-98J00-000**

# MECHANICAL REMOTE CONTROL SYSTEM

## REMOTE-CONTROL KIT for SINGLE ENGINE



### Gauge Kit Component



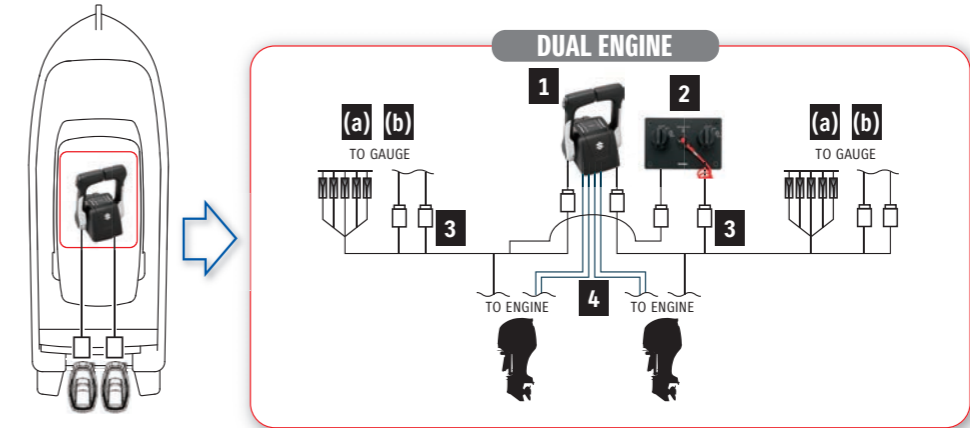
### Basic Kit Component



REMOTE-CONTROL KIT for SINGLE ENGINE			KIT					Required
Part Number	Part Name	Length	67000-88L01-000	67000-88L22-000	67000-93J28-000	67000-93J94-000	67000-93J83-000	
1	67200-88L00-000	Binnacle Mount R/C Box	1	1	-	-	-	1
	67200-93J33-000	Flush Mount R/C Box	-	-	1	1	-	1
	67200-93J51-000	Side Mount R/C Box	-	-	-	-	1	1
2	37100-96J25-000	Single Ignition with E/S Switch	1	1	1	1	*A	1
	36620-93J02-000		6.5m	1	-	1	1	1
3	36620-93J52-000	Main Wiring Harness	5.0m	-	-	-	-	1
	36620-93J62-000		8.0m	-	-	-	-	1
(a)	34200-93J14-000	Tachometer (Face: White)	-	1	-	1	1	
(b)	34800-93J13-000	Trim Gauge (Face: White)	-	1	-	1	1	
4	67320-93J00-000	R/C Cable (ORT Throttle and Shift Cables)	8ft. / 2.44m					2
	67320-93J10-000		10ft. / 3.05m					
	67320-93J20-000		12ft. / 3.66m					
	67320-93J30-000		14ft. / 4.27m					
	67320-93J40-000		16ft. / 4.88m					
	67320-93J50-000		18ft. / 5.49m					
	67320-93J60-000		20ft. / 6.10m					
	67320-93J70-000		22ft. / 6.71m					
	67320-93J80-000	24ft. / 7.32m						
	36620-93J10-000	Main Wiring Harness Extension	2m					
	36620-93J40-000		3m					

■ The high-lighted products are optional. Please make your best choice depending on your boat.  
 ■ \*A The side mount control box is equipped with ignition switch, emergency switch and warning buzzer with clamp.

## REMOTE-CONTROL KIT for DUAL ENGINE



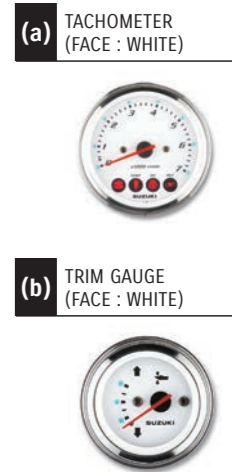
### Basic Kit Component



REMOTE-CONTROL KIT for DUAL ENGINE			KIT		Required
Part Number	Part Name	Length	67000-88L11-000	67000-88L32-000	
1	67200-88L10-000	Binnacle Mount R/C Box	1	1	1
2	37100-96J15-000	Dual Ignition with E/S Switch	1	1	1
3	36620-93J02-000	Main Wiring Harness	6.5m	2	2
	36620-93J52-000		5.0m	-	
	36620-93J62-000		8.0m	-	
(a)	34200-93J14-000	Tachometer (Face: White)	-	2	
(b)	34800-93J13-000	Trim Gauge (Face: White)	-	2	
4	67320-93J00-000	R/C Cable (ORT Throttle and Shift Cables)	8ft. / 2.44m		4
	67320-93J10-000		10ft. / 3.05m		
	67320-93J20-000		12ft. / 3.66m		
	67320-93J30-000		14ft. / 4.27m		
	67320-93J40-000		16ft. / 4.88m		
	67320-93J50-000		18ft. / 5.49m		
	67320-93J60-000		20ft. / 6.10m		
	67320-93J70-000		22ft. / 6.71m		
	67320-93J80-000	24ft. / 7.32m			
	36620-93J10-000	Main Wiring Harness Extension	2m	1	
	36620-93J40-000		3m		

■ The high-lighted products are optional. Please make your best choice depending on your boat.

### Gauge Kit Component





## REMOTE-CONTROL KIT for SINGLE ENGINE (KEYLESS START SYSTEM)

REMOTE-CONTROL KIT for SINGLE ENGINE			KIT					Required
PART NUMBER	PART NAME	LENGTH	67000-88L41-000	67000-88L62-000	67000-93JF2-000	67000-93JK2-000	67000-93JJ1-000	SINGLE STATION
			BINNACLE-MOUNT CONTROL KIT	BINNACLE-MOUNT CONTROL KIT	FLUSH-MOUNT CONTROL KIT	FLUSH-MOUNT CONTROL KIT	SIDE-MOUNT CONTROL KIT	
1	67200-88L00-000	BINNACLE MOUNT R/C BOX	1	1	-	-	-	1
	67200-93J33-000	FLUSH MOUNT R/C BOX	-	-	1	1	-	
	67200-96L01-000	SIDE MOUNT R/C BOX	-	-	-	-	1	
2	37100-96L11-000	SINGLE IGNITION WITH E/S SWITCH	1	1	1	1	*A	1
3	36620-93J02-000	MAIN WIRING HARNESS	6.5m	1	-	1	1	1
	36620-93J52-000		5.0m	-	-	-	-	
	36620-93J62-000		8.0m	-	-	-	-	
(a)	34200-93J14-000	TACHOMETER (FACE : WHITE)	-	1	-	1	1	
(b)	34800-93J13-000	TRIM GAUGE (FACE : WHITE)	-	1	-	1	1	
4	67320-93J00-000	R/C CABLE (ORT THROTTLE AND SHIFT CABLES)	8ft. / 2.44m					2
	67320-93J10-000		10ft. / 3.05m					
	67320-93J20-000		12ft. / 3.66m					
	67320-93J30-000		14ft. / 4.27m					
	67320-93J40-000		16ft. / 4.88m					
	67320-93J50-000		18ft. / 5.49m					
	67320-93J60-000		20ft. / 6.10m					
	67320-93J70-000		22ft. / 6.71m					
67320-93J80-000	24ft. / 7.32m							
-	36620-93J10-000	MAIN WIRING HARNESS EXTENSION	2m					
-	36620-93J40-000		3m					

■ The high-lighted products are optional. Please make your best choice depending on your boat.

■ \*A The side mount control box is equipped with ignition switch, emergency switch and warning buzzer with clamp.



## REMOTE-CONTROL KIT for DUAL ENGINE (KEYLESS START SYSTEM)

REMOTE-CONTROL KIT for DUAL ENGINE			KIT		Required
PART NUMBER	PART NAME	LENGTH	67000-88L51-000	67000-88L72-000	SINGLE STATION
			BINNACLE-MOUNT CONTROL KIT	BINNACLE-MOUNT CONTROL KIT	
1	67200-88L10-000	BINNACLE MOUNT R/C BOX	1	1	1
2	37100-96L21-000	DUAL IGNITION WITH E/S SWITCH	1	1	1
3	36620-93J02-000	MAIN WIRING HARNESS	6.5m	-	2
			5.0m	-	-
			8.0m	-	-
(a)	34200-93J14-000	TACHOMETER (FACE : WHITE)	-	2	
(b)	34800-93J13-000	TRIM GAUGE (FACE : WHITE)	-	2	
4	R/C CABLE (ORT THROTTLE AND SHIFT CABLES)	67320-93J00-000	8ft. / 2.44m		4
		67320-93J10-000	10ft. / 3.05m		
		67320-93J20-000	12ft. / 3.66m		
		67320-93J30-000	14ft. / 4.27m		
		67320-93J40-000	16ft. / 4.88m		
		67320-93J50-000	18ft. / 5.49m		
		67320-93J60-000	20ft. / 6.10m		
		67320-93J70-000	22ft. / 6.71m		
67320-93J80-000	24ft. / 7.32m				
-	36620-93J10-000	MAIN WIRING HARNESS EXTENSION	2m		
-	36620-93J40-000		3m		1
-	36621-96L00-000	HARNSS ASSY,DUAL KLS ENG	1	1	
-	36663-96L10-000	WIRE COMP,KLS CAN EXT	1	1	
-	36664-96L00-000	HARNSS ASSY,KLS CAN	1	1	

■ The high-lighted products are optional. Please make your best choice depending on your boat.



# COMPONENT OF MECHANICAL REMOTE CONTROL SYSTEM

## BINNACLE-MOUNT REMOTE CONTROL BOX



**67200-88L00-000**  
for Single-Engine  
Applicable Model DF8A-250



**67200-88L10-000**  
for Dual-Engine  
Applicable Model DF8A-250



**67200-93J33-000**  
for Single-Engine  
Applicable Model DF8A-250



**67200-91J20-000**  
for Single-Engine  
Applicable Model DF4A-6A

## SPACER KIT for REMOTE CONTROL BOX



**67500-88L00-000**  
for Single Binnacle-mount type  
Applicable Model DF8A-250



**67500-88L10-000**  
for Dual Binnacle-mount type  
Applicable Model DF8A-250

## BATTERY LEAD



**67200-94J20-000**  
for Single-Engine. With warning buzzer  
Applicable Model DF8A-30A

**67200-93J51-000**  
for Single-Engine. With PTT switch  
Applicable Model DF9.9B-250

**67200-96L01-000**  
for Single-Engine. With PTT switch for Keyless Start System  
Applicable Model DF9.9B-250

**67200-97E50-000**  
for Single-Engine. With warning buzzer  
Applicable Model DT40WR

**67200-963A0-000**  
for Single-Engine  
Applicable Model DT30R

## MAIN WIRING HARNESS



**36620-93J02-000**  
6.5 meters for Control system  
Applicable Model DF40A-250

**36620-94L01-000**  
6.5 meters for Control system  
Applicable Model DF25A/30A

**36620-94J01-000**  
6.5 meters for Control system without Monitor-signal wire, Trim-sender wire and PTT-SW wire  
Applicable Model DF8A/9.9A

**36620-93J52-000**  
5.0 meters for Control system  
Applicable Model DF40A-250

**36620-93J62-000**  
8.0 meters for Control system  
Applicable Model DF40A-250

**36620-89L00-000**  
6.5 meters for Control system  
Applicable Model DF9.9B/15A/20A

## MAIN WIRING HARNESS EXTENSION

**36620-93J10-000**  
2.0 meters for Control system  
Applicable Model DF9.9B-250

**36620-93J40-000**  
3.0 meters for Control system  
Applicable Model DF9.9B-250

## IGNITION SWITCH PANEL



**37100-96J00-000**  
Single ignition  
Applicable Model DF9.9B-250



**37100-96J25-000**  
Dual ignition with Emergency-stop switch  
Applicable Model DF9.9B-250



**37100-96J15-000**  
Dual ignition with Emergency-stop switch  
Applicable Model DF9.9B-250

## EMERGENCY SWITCH PANEL



**37803-93J05-000**  
Applicable Model DF9.9B-300AP

## LIGHTING SWITCH PANEL



**37210-93J00-000**  
Applicable Model DF9.9B-250, DT30/40W

## PTT SWITCH PANEL



**37805-93J00-000**  
Applicable Model DF40A-250

## REMOTE-CONTROL CABLE



**67320-93J00-000**  
8 feet 2.44 meters  
Applicable Model DF4A-250, DT30/40W

**67320-93J10-000**  
10 feet 3.05 meters  
Applicable Model DF4A-250, DT30/40W

**67320-93J20-000**  
12 feet 3.66 meters  
Applicable Model DF4A-250, DT30/40W

**67320-93J30-000**  
14 feet 4.27 meters  
Applicable Model DF4A-250, DT30/40W

**67320-93J40-000**  
16 feet 4.88 meters  
Applicable Model DF4A-250, DT30/40W

**67320-93J50-000**  
18 feet 5.49 meters  
Applicable Model DF4A-250, DT30/40W

**67320-93J60-000**  
20 feet 6.10 meters  
Applicable Model DF4A-250, DT30/40W

**67320-93J70-000**  
22 feet 6.71 meters  
Applicable Model DF4A-250, DT30/40W

**67320-93J80-000**  
24 feet 7.32 meters  
Applicable Model DF4A-250, DT30/40W

GENUINE REMOTE-CONTROL CABLES employ the latest in cable technology. The inner core is encased in nylon, and travels back and forth in a high-density polyethylene liner.

## REMOTE-CONTROL ATTACHING KIT

Converts ME model to REMOTE-CONTROL model.



**67130-94L02-000**  
Applicable Model DF25A/30A

**67130-94L12-000**  
Applicable Model DF25ATH/30ATH

**67130-99J01-000**  
CLAMP BRACKET SET (41100-99J00-0EP) is required for installing 67130-99J00-000.  
Applicable Model DF8A/9.9A

**67101-97L00-000**  
Applicable Model DF4A-6A

**67130-89L20-000**  
Applicable Model DF9.9B/15A/20A

**67130-91L00-YAY**  
Applicable Model DT25K/30

**67130-94812-000**  
Applicable Model DT40W

## TWIN REMOTE-CONTROL ATTACHMENT KIT



**67140-95600-000**  
Applicable Model DF8A-250, DT30/40W

## RIGGING TUBE



**990C0-20010-000**  
Applicable Model DF70A-DF300AP  
\*Connect to the hose adapter equipped on the engine

## CLAMP BRACKET SET

**41100-99JL0-YAY**  
Applicable Model DF8A/9.9A

## TROLL MODE SWITCH PANEL



**37860-87L00-000**  
Applicable Model DF40A-140A/150AP/175AP/200A/AP/250AP/300AP/350A  
Activates SUZUKI Troll Mode System and controls RPM from idling engine speed up to 1200rpm at every 50rpm.

## SUZUKI TROLL MODE SYSTEM

An optional extra on Remote Control models from over DF40A, this easy-to-use system lets you adjust engine speed in 50rpm increments, giving highly precise control at low revs. With its own tachometer and control switch, it works alongside our multi-function gauges and analogue gauges. (Suzuki Troll Mode System is originally equipped with Tiller Handle models from over DF40A.)

\*Not Applicable for DF150,175,200,225,250





## TILLER HANDLE KIT



### 63002-88L24-YAY

Applicable Model  
DF40A/50A

### 63002-88L14-YAY

Applicable Model  
DF60A/50AV/60AV

### 63002-87L15-YAY

Applicable Model  
DF70A-90A

### 63002-90J35-YAY

Applicable Model  
DF100A/115A

## Main features



**Tachometer with warning indicators**



**Three-position angle adjustable bracket**



**Troll mode switch**  
· Activates SUZUKI Troll Mode System and controls RPM from idling engine speed up to 1200rpm at every 50rpm.



**Power trim & tilt switch and throttle grip friction adjuster**

## DUAL-ENGINE TIE-BAR



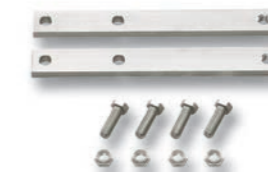
### 67600-90J00-000

Stainless steel  
Applicable Model DF100A-140A

### 67600-93J00-000

Stainless steel  
Applicable Model DF150-250

## STEERING EXTENSION KIT



### 67630-93J00-000

for installation of DUAL-ENGINE TIE-BAR (67600-93J00-000)

Applicable Model DF150-250

## DRAG-LINK KIT



### 67700-87L01-000

Applicable Model DF70A-90A

### 67700-93J00-000

Applicable Model DF40A-60A/200-250

### 67700-96J00-000

Applicable Model DF150-175/200A/AP

### 67701-87J11-000

Applicable Model DF40A-60A/200-250

### 67701-87L01-000

Applicable Model DF70A-90A

### 67701-90J01-000

Applicable Model DF100A-140A

### 67701-96J00-000

Applicable Model DF150-175/200A/AP

### 67701-94420-000

Applicable Model DT25K/30

### 67701-94L00-000

Applicable Model DF25A/30A

### 67701-99J02-000

Applicable Model DF8A-DF20A

## STEERING-BRACKET ATTACHMENT



### 43755-87L00-000

Applicable Model DF70A/90A

### 43755-88L00-000

Applicable Model DF40A-60A

### 43755-94L00-000

Applicable Model DF25A-30A

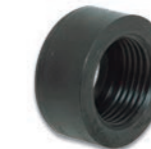
### 43755-99J00-000

Applicable Model DF8A-20A

### 43755-96320-000

Applicable Model DT25K/30/40W

## STEERING CABLE SEAL

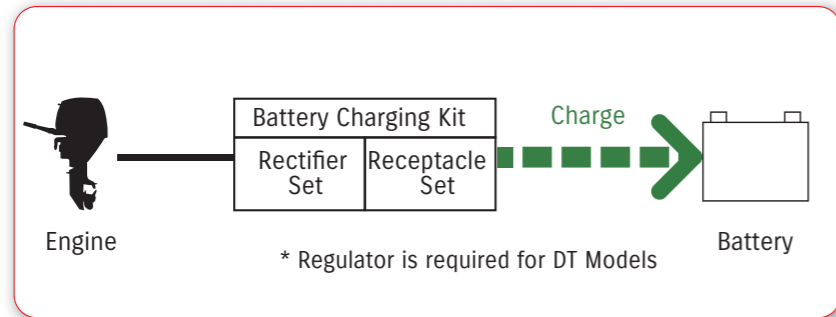


### 41161-94400-000

Applicable Model DF8A-250, DT25K-40W

## BATTERY CHARGING KIT

- Optional equipment for charging Battery
- Required for : DF4A/5A/6A, DF8A/9.9A, DF9.9B/15A/20A, DF25A/30A, DT9.9A/15A, DT25K, DT30, DT40W.



### DF series

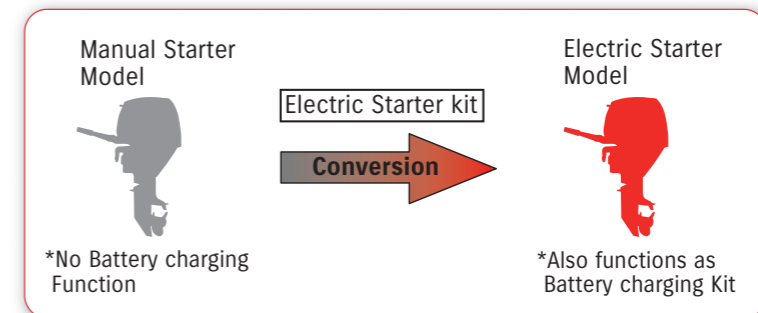
APPLICABLE MODEL	BATTERY CHARGING KIT RECTIFIER and REGULATOR SET RECEPTACLE KIT
DF4A/5A/6A	32000-97L00-000 32801-97L00-000 39600-97L00-000
DF8A/9.9A	32000-99J00-000 32801-95J01-000 39600-94J01-000
DF9.9B/15A/20A	32000-89L01-000 32801-89L01-000 39600-89L01-000
DF25A/30A	32000-94L01-000 32800-88L01-000 39600-94L00-000 32815-94L00-000 (BRACKET) 01550-06207-000 (BOLT)

### DT series

APPLICABLE MODEL	BATTERY CHARGING KIT			QTY
	RECTIFIER SET	RECEPTACLE SET	REGULATOR	
DT9.9A/15A	32801-93903-000	39600-93910-000	32500-95722-000 REGULATOR ASSY, VOLTAGE	1
			32590-93900-000 STAY, VOLTAGE REGULATOR	1
			02162-06127-000 SCREW, VOLTAGE REGULATOR	2
			08310-00067-000 NUT, VOLTAGE REGULATOR	2
			08321-01067-000 WASHER, VOLTAGE REGULATOR LOCK	2
			08322-01067-000 WASHER, VOLTAGE REGULATOR	2
DT25K/30	32801-96304-000	39600-93910-000	32500-95722-000 REGULATOR ASSY, VOLTAGE	1
			02162-06127-000 SCREW, VOLTAGE REGULATOR	2
			08322-01067-000 WASHER, VOLTAGE REGULATOR	2
DT40W	32801-94402-000	39600-93910-000	32500-95722-000 REGULATOR ASSY, VOLTAGE	1
			02162-06127-000 SCREW, VOLTAGE REGULATOR	2
			08321-01067-000 WASHER	2

## ELECTRIC STARTER KIT

- Optional materials for Converting Manual Starter model into Electric Starter model.
- \* Electric Starter Kit functions as Battery charging Kit as well.



### DF series

APPLICABLE MODEL	ELECTRIC STARTER KIT
DF4A/5A/6A	-
DF8A/9.9A	31000-99J01-000
DF25A/30A	31000-94L05-000
DF9.9B/15A/20A	31000-89L07-000 (For -17MY) 31000-89L11-000 (For 18MY-)
	DF9.9B 33920-89LL0-000 DF15A 33920-89LG0-000 DF20A 33920-89LJ0-000 DF20A(P40) 3390-89LN0-000

### DT series

APPLICABLE MODEL	ELECTRIC STARTER	QTY	REGULATOR	
			REGULATOR	QTY
DT9.9A/15A	-	-	32500-95722-000 REGULATOR ASSY, VOLTAGE	1
			32590-93900-000 STAY, VOLTAGE REGULATOR	1
			02162-06127-000 SCREW, VOLTAGE REGULATOR	2
			08310-00067-000 NUT, VOLTAGE REGULATOR	2
			08321-01067-000 WASHER, VOLTAGE REGULATOR LOCK	2
			08322-01067-000 WASHER, VOLTAGE REGULATOR	2
DT30	31101-96320-0EP MOTOR SET, STARTING	1	32500-95722-000 REGULATOR ASSY, VOLTAGE	1
	32102-96462-000 FLYWHEEL COMP, MAGNETO	1	02162-06127-000 SCREW, VOLTAGE REGULATOR	2
	32801-96304-000 RECTIFIER SET	1	08322-01067-000 WASHER, VOLTAGE REGULATOR	2
	33800-96305-000 SET, STARTING CABLE & SWITCH	1		
	33815-94501-000 PROTECTOR, STARTER CABLE	1		
DT40W	01550-06167-000 BOLT, CABLE PROTECTOR	1		
	36740-93901-000 CASE ASSY, FUSE	1	32500-95722-000 REGULATOR ASSY, VOLTAGE	1
	31101-94402-0EP MOTOR SET, STARTING	1	02162-06127-000 SCREW, VOLTAGE REGULATOR	2
	32102-92L00-000 FLYWHEEL COMP, MAGNETO	1	08321-01067-000 WASHER	2
	32801-94402-000 RECTIFIER SET	1		
	33800-94433-000 SET, STARTING CABLE & SWITCH	1		

## BATTERY CHARGING KIT



## ELECTRIC STARTER KIT



## BATTERY ISOLATOR LEAD SET

Optional equipment for charging additional battery.

### 33830-98J11-000

Applicable Model DF150T/Z/175T/Z/  
150AP/175AP  
200AP/250AP/  
300AP/350AP

# FUEL SYSTEM

## FUEL TANK

NOTE : These tanks do not meet US-EPA requirements.



### 65000-99100-000

12-liter plastic tank with no fuel-level gauge

Applicable Model DT9.9AK/15AK/25K/40WK(-K:For Gasoline)

### 65000-94L10-000

25-liter plastic tank with a fuel-level gauge

Applicable Model DF8A-140A, DT9.9AK-40W/WR/WK (-K:For kerosene)

### 65000-89L10-000

12-liter plastic tank

Applicable Model DF5A-20A

## FUEL CONNECTOR (ENGINE SIDE)



### 65720-986B0-000

Plastic,  
Applicable Model DF4A

## FUEL-HOSE

### 09352-73123-00D

I/D 7.3, O/D 12.5  
LENGTH 4,000mm  
Not US-EPA compatible

## FUEL CONNECTOR (TANK SIDE)



### 65740-95D01-000

Outer diameter: 13 mm, 1/4"NPT  
Applicable Model DF8A/R-140A, DT9.9K-40W/WR/WK

## FUEL-HOSE COMPONENT



### 65700-87J16-000

for 12-liter plastic tank to engine

Applicable Model DF5A/6A

### 65700-93J11-000

for fuel tank to engine

Applicable Model DF150-300AP

### 65700-87J16-000

for 25-liter plastic tank to engine

Applicable Model DF8A-20A

### 65700-90J21-000

for 25-liter plastic tank to engine

Applicable Model DF40A-140A

### 65700-95D05-000

for 12-liter plastic tank to engine (gasoline)

Applicable Model DT9.9AK/15AK/25K/40WK

### 65700-96362-000

for 25-liter plastic tank to engine (kerosene)

Applicable Model DT9.9AK/15AK/25K/40WK

### 65700-94417-000

with fuel filter (gasoline)

Applicable Model DT9.9AK/15AK/25K/40WK

### 65700-94433-000

with fuel filter (kerosene)

Applicable Model DT9.9AK/15AK  
Only for P36 ver.

## REPLACEMENT FUEL CAP

NOTE : This caps do not meet US-EPA requirements.

### 65520-99100-000

Applicable Model DF5A-20A,DT9.9-40W

## FUEL-HOSE SOCKET



### 65750-98505-000

Metal, Inner diameter: 11.2 mm

Applicable Model DF4A-20A/R, DT9.9K-40W/WR/WK



### 65750-87J11-000

Plastic, Inner diameter: 6.6 mm

Applicable Model DF4A/8A-30A



### 65750-95500-000

Metal, Inner diameter: 13.0 mm

Applicable Model DF8A/R-140A, DT9.9AK-40W/WR/WK

## SQUEEZE PUMP



### 65770-99J02-000

Small-in & Large-out

Applicable Model DF4A-6A, DT9.9AK/15AK/25K/40WK

### 65770-90J12-000

Large-in & Large-out

Applicable Model DF8A-140A, DT9.9AK/15AK/25K/40WK

### 65770-93J12-000

Large-in & Large-out

Applicable Model DF150-300AP

### 65770-87D10-000

Large-in & Small-out

Applicable Model DT9.9A/15A/30/40W

### SQUEEZE PUMP (Meets US-EPA requirements.)

### 65770-94J04-000

Small-in & Large-out

Applicable Model DF4A/6A

### 65770-90J04-000

Large-in & Large-out

Applicable Model DF8A-25A/30A

### 65770-93J04-000

Large-in & Large-out

Applicable Model DF150-300AP

### FUEL-HOSE COMPONENT (Meets US-EPA requirements.)

### 65700-87J27-000

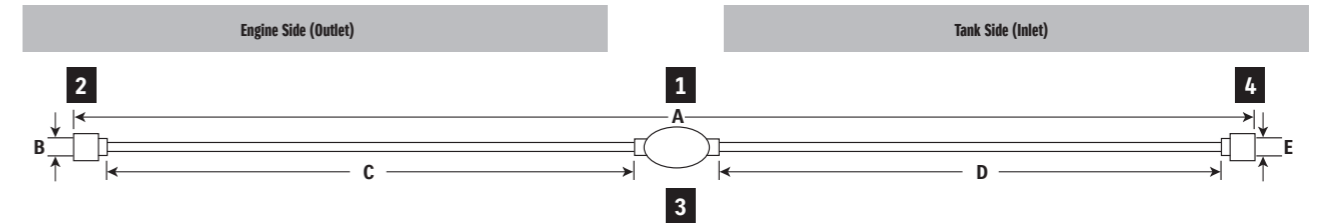
Applicable Model DF5A/6A

### 65700-87J27-000

Applicable Model DF8A-30A

### 65700-88L05-000

Applicable Model DF40A-60A



## FUEL-HOSE COMPONENT Chart

1 FUEL-HOSE COMPONENT	2 FUEL-HOSE SOCKET Metal	3 SQUEEZE PUMP	4 FUEL-HOSE SOCKET Metal

1 FUEL HOSE COMPONENT	2 SOCKET						3 SQUEEZE PUMP	4 SOCKET								
	Part Number	A Length (mm)	Material	B I/D (mm)	Part Number	C Length (mm)		I/D (mm)	O/D (mm)	D Length (mm)	I/D (mm)	O/D (mm)	Material	E I/D (mm)	Part Number	
65700-94JD2-000	1970	Plastic	6.6	65750-87J11-000	700	Large	7.3	12.5	65770-99J02-000	1100	Small	5.3	10.5	Metal	11.2	65750-98505-000
65700-93J03-000	2370	(no socket)	-	-	(no hose)	-	-	-	65770-93J12-000	2250	Large	9.0	14.0	(no socket)	-	-
65700-87J16-000	1970	Plastic	6.6	65750-87J11-000	700		7.3	12.5	65770-90J12-000	1100		7.3	12.5	Metal	13.0	65750-95500-000
65700-90J15-000	1250	(no socket)	-	-	(no hose)	-	-	-	65770-90J12-000	1100		7.3	12.5	Metal	13.0	65750-95500-000
65700-95D05-000	2550	Metal	13.0	65750-95500-000	300		7.3	12.5	65770-99J02-000	2090		5.3	10.5	Metal	11.2	65750-98505-000
65700-96362-000	2620	Metal	11.2	65750-98505-000	300		5.3	10.5	-	2250		7.3	12.5	Metal	13.0	65750-95500-000
65700-94417-000	3100	Metal	13.0	65750-95500-000	300		7.3	12.5	65770-90J12-000	2600		7.3	12.5	-	-	-
65700-94433-000	3100	Plastic	13.8	65750-94404-000	3000		7.3	12.5	-	-		-	-	-	-	-
65700-91J27-000	2000	Plastic	6.6	65750-87J11-000	700		7.3	12.5	65770-94J03-000	1100		5.3	10.5	Metal	11.2	65750-98505-000
65700-87J27-000	2000	Plastic	6.6	65750-87J11-000	700		7.3	12.5	65770-90J03-000	1100		7.3	12.5	Metal	13.0	65750-95500-000
65700-88L05-000	1280	(no socket)	-	-	(no hose)	-	-	-	65770-90J03-000	1100		7.3	12.5	Metal	13.0	65750-95500-000

## WATER SEPARATOR / FUEL FILTER



### 65900-98J00-000

Applicable Model DF5A/DF8A-300AP, DT9.9A-40W/WR/WK

## ELEMENT SET



### 65910-98J00-000

Applicable Model DF5A/DF8A-300AP, DT9.9A-40W/WR/WK

# PROPELLER

## What is PROPELLER

Propeller selection is very important in the performance of your boat. Acceleration, speed, fuel efficiency, stability and engine RPM all are affected by the propeller selected. Operating requirements and conditions will also affect which design, style and pitch of propeller you may choose to meet your individual needs. The combination of boat, engine and appropriate propeller size may have already been tested by the boat manufacturer. **Your Customer may need your assist with the process to determine the correct propeller for their application.**

## Stainless Steel Propellers

Suzuki Stainless Steel Propellers offer higher performance and greater durability than aluminum propellers. The aggressive design of these propellers enhances the overall performance of your boat and the durability of the stainless steel construction will give you long term dependability. Your Suzuki Stainless Steel propeller is also fitted with a rubber cushion hub to help absorb vibration and shock should you strike a foreign object.

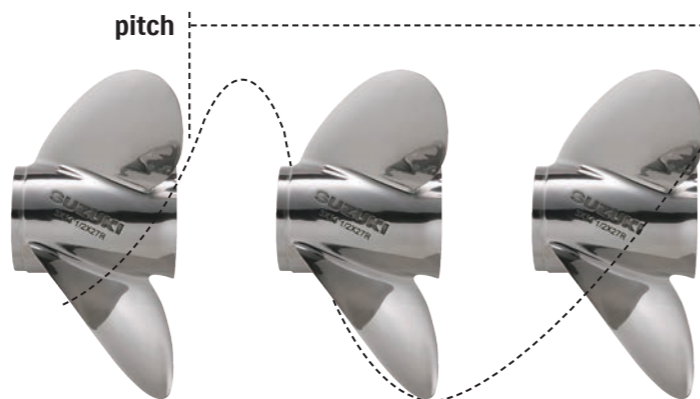
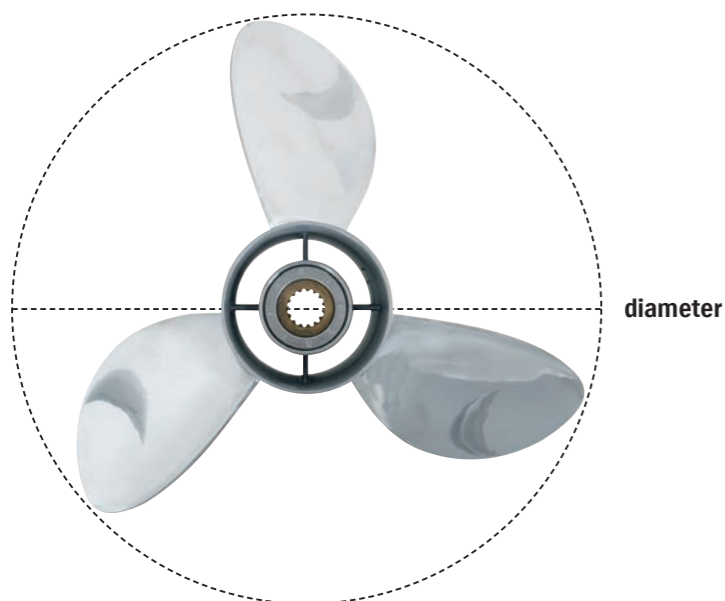
## Propeller Sizing

When referring to propeller size, such as 3 x 13 x 18, the first number is the number of blade, the second number details the diameter of the propeller and the third number is the pitch of the propeller.

The pitch is the most significant number in the description. The diameter is usually predetermined by the propeller engineers and is based on the size and series of the engine.

## Diameter

Diameter is considered to be the distance across an imaginary circle that is made when a propeller is rotated. Diameter is determined during the engineering process of designing a propeller and is usually based on requirements to meet the needs of engine size, gear case design, horsepower and speed.



## Pitch

Pitch is used to describe the theoretical distance that a propeller “cork screws” through the water in inches of forward travel. In theory, an 18” pitch propeller would move ahead 18” with each complete revolution of a propeller. There is always some percentage of inefficiency as water conditions, boat weight and propeller style are introduced into the performance equation. The lower the “slip factor,” the more efficiently the propeller will perform and the faster the speed at a given engine RPM. Lower pitches accelerate faster, but have a lower top end speed. Higher pitches have a slower acceleration, but may attain higher top speeds. An inch of pitch generally is equal to 150-200 engine RPM at wide open throttle (WOT). If pitch is increased by an inch, RPM will decrease by 150-200 RPM at WOT. If pitch is decreased by an inch, RPM will increase by 150-200 RPM at WOT. Always operate your boat/engine combination within the recommended RPM range guidelines as stated in your operator’s manual. Operating outside the recommended range can cause severe damage to your engine and may void the engine warranty.



## Propeller Cup

Cup is used to reduce the slip and ventilation of the propeller. This will allow you to operate your engine at a higher transom mounting and allow you to use more trim for bow lift. The cup refers to the area along the trailing edge of the propeller blade that has an increased pitch in the last 1/2” of the blade surface and extends to the blade tip.

## Rake

Rake is described as the angle, in degrees, that the propeller blades are mounted to the “barrel” of the propeller. The blades of a zero degree rake propeller are mounted perpendicular to the “barrel” of the propeller. The blades of a higher rake propeller angle more to the rear of the propeller. A propeller with a high rake design will hold the water on the blades longer during operation and will ventilate less at higher engine heights. High rake propellers will produce higher thrust that will help lift the bow of the boat more effectively.

## HARDWARE FOR PROPELLER

Applicable Model	STOPPER	PROPELLER BUSH	HARDWARE KIT					
			SPACER	WASHER	STOPPER	NUT	COTTER PIN	
DF2.5	57635-91JL0-000	58120-97JA0-000	N/A	-	-	-	58130-91JL0-000	09204-03003-000
DF4A/5A/6A	57635-97L00-000	58120-91JL0-000	N/A	-	-	-	58130-91JL0-000	09204-03003-000
DF8A/9.9A	57632-94J00-000	58120-89L00-000	N/A	-	09160-12066-000	-	09141-12005-000	09204-02004-000
DF9.9B/15A/20A	57632-94J00-000	58120-89L00-000	N/A	-	09160-12066-000	-	09141-12005-000	09204-02004-000
DT9.9A/15A	57632-94J00-000	58120-89L00-000	N/A	-	09160-12066-000	-	09141-12005-000	09204-02004-000
DF25A/30A	57632-91L00-000	58120-96401-000	57630-96300-000	57633-96300-000	09160-14028-000	-	09141-14008-000	09204-03003-000
DT25/30	57632-91L00-000	58120-96401-000	57630-96300-000	57633-96300-000	09160-14028-000	-	09141-14008-000	09204-03003-000
DF40A/50A/60A	57632-95320-000	58120-88L01-000	57630-94301-000	57633-94301-000	09160-18028-000	-	09141-18005-000	09204-03003-000
DT40	57632-92L00-000	58120-88L01-000	57630-92L01-000	57633-92L00-000	09160-16054-000	-	09141-16008-000	09204-03003-000
DF50AV/60AV	57635-90J01-000	58105-90J00-000	57630-90J00-000	57633-90J02-000	09160-18028-000	-	09141-18005-000	09204-03003-000
DF70A/80A/90A/100B	57632-87L01-000	58105-90J00-000	57630-90J00-000	57633-90J02-000	09160-18028-000	-	09141-18005-000	09204-03003-000
DF100A/115A/140A	57635-92J01-000	58105-90J00-000	57630-90J00-000	57633-90J02-000	09160-18028-000	-	09141-18005-000	09204-03003-000
DF150A-300AP	57632-93L10-000	58120-93L00-000	57630-93L00-000	57633-93L00-000	09160-18028-000	-	09141-18005-000	09204-03003-000
DF325A/350A Front	58531-98L00-000	58520-98L00-000	58540-98L00-000	58541-98L00-000	-	58551-98L00-000	58561-98L00-000	-
DF325A/350A Rear	58631-98L00-000	58620-98L00-000	58640-98L00-000	58641-98L00-000	09160-18019-000	-	09141-18005-000	09204-03003-000

\*1 58105-90J00 is for **58100-87Lxx**, **58100-90Jxx**, **58200-92J4x-92J9x** and **58200-92JAx-92JDx**.  
 \*2 58120-90J00 is for **58200-90J0x-90J3x** and **58200-92J0x-92J3x**. \*3 58105-93J00 is for **58200-96Jxx**.  
 \*4 58105-93J10 is for **58200-93Jxx**, **58200-93Lxx** and **58300-93Jxx**.  
 These bold letters indicate a proper part number in P34 & 35. Please refer to next pages.



## SUZUKI PROPELLERS

## WATERGRIP

### Ultimate power delivery

All Suzuki propellers are designed specifically for your outboard to give outstanding performance for long reliable and trouble free service. Made from stainless steel they are incredibly hard wearing making them durable, dependable and fit for purpose.

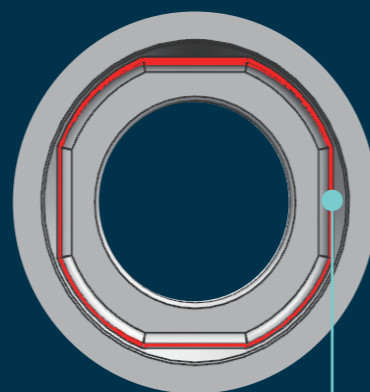
To get the best from your outboard we have launched a new series of propellers. Our very first propeller brand; WATERGRIP.

## THE NEW WATERGRIP RANGE

WATERGRIP is a new stainless-steel propeller series offering accurate response to your operation. With efficient conversion of engine power into propulsion, this propeller series meets our customers' demand for bigger, faster, more powerful outboards.

The WATERGRIP propeller series employs a new interchangeable and square shaped propeller bush that minimises power loss in delivery.

PROPELLER BUSH ADVANTAGES



- Better resistance over propeller slip
- Interchangeable bush

## WATERGRIP

The WATERGRIP series will be the new standard for Suzuki propellers. The new interchangeable and square shaped bush system is designed not only to be replaced easily and quickly when required, but also to accurately and efficiently convert power from the engine to thrust through the propeller.

As a result, you will be able to enjoy more time having the ultimate experience on the water rather than waiting for repairs on the land.



## WATERGRIP DUAL

Our new flagship models, the DF350A and DF325A, introduced the Suzuki Dual Prop System, an industry-leading technology that is truly a revolution in innovation. Big engines demand more efficient conversion of engine output into propulsion.

With two contra-rotating propellers operating simultaneously, the conversion efficiency becomes greater as does stability, grip and manoeuvrability. The end-result is that the Suzuki Dual Prop System delivers outstanding and exciting performance.



## WATERGRIP SPORT

In addition to ease of maintenance and efficiency of power conversion, the WATERGRIP SPORT propellers feature a high rake blade design, which delivers excellent acceleration and exceptional top speed. These propellers are ideal for lightweight sports boats as they give remarkably stable thrust when turning which results in superior manoeuvrability and lots of fun boating.



COMING IN 2019



# CARE & MAINTENANCE ITEM

## SUZUKI APPROVED GENUINE OIL

- Specialty designed oil for SUZUKI 2 stroke outboard motor.
- High quality 2stroke motor oil provide proper viscosity to be stability when temperature change and keep excellent oxidation.
- Outstanding performance for wear protection, viscosity stability, low volatility and excellent rust protection and corrosion.

\* Availability may differ in some regions.  
Please contact Thai Suzuki Motor Co, Ltd. for more information and making an order.



**2-STROKE ENGINE OIL "PREMIUM"**  
Mineral, 1 liter

## SUZUKI APPROVED GENUINE OIL by MOTUL

These products are supplied directly by MOTUL. Please note that these oils are not available in some countries. Please contact with local distributor of MOTUL.

Suzuki and MOTUL have been in partnership in MotoGP since 1988. Extending this trusted relationship led to the development of new Suzuki Marine Oils. These ranges of oils have excellent oxidation stability and provide outstanding rust protection under severe operating conditions.

API Classification	SAE Viscosity Grade
SG	10W-40
SH	10W-40
SL	10W-40
SJ	10W-40
SM	10W-30
	10W-30
	10W-40

TEMP.	C	F
	-20	-4
	-10	14
	0	32
	10	50
	20	68
	30	86
	40	104



**4-STROKE ENGINE OIL**  
SAE 10W-30 Semi-Synthetic  
5 liter, FC-W



**4-STROKE ENGINE OIL**  
SAE 10W-40 Semi-Synthetic  
5 liter, FC-W



**2-STROKE ENGINE OIL (TC-W3)**  
High Performance 2T Engine Oil  
1 liter, TC-W3



**4-STROKE ENGINE OIL (10W-40)**  
SAE 10W-40 Mineral  
1 liter



**GEAR OIL**  
SAE 90, API GL-5  
0.35 liter

\* 4 kinds (1L, 5L, 60L, 208L) of Engine oil volume and 3 kinds (0.35L, 1L, 60L) of Gear oil are available. Please ask your local MOTUL dealer.

## ENGINE COVER



**68110-88L01-000**  
Applicable Model DF25/40A-60A, DT25/30

**68110-87L01-000**  
Applicable Model DF70A-140A, DT40

**68110-96J01-000**  
Applicable Model DF150T/Z-250T/Z

**68110-89L01-000**  
Applicable Model DF8A-20A, DT9.9A-15A

**68110-98J01-000**  
Applicable Model DF250AP/300AP

**68110-98L00-000**  
Applicable Model DF325A/350A

## FLUSH-HOSE ATTACHMENT



**55181-95200-000**  
Applicable Model DF4A-6A/40A-60A,DT40W

**17917-87L00-000**  
Applicable Model DF8A-300A

## FLUSHING TOOL FOR DF350A



**99000-81200-000**  
FLUSHING TOOL  
Applicable Model DF350A

## GREASE



**99000-25480-000**  
SUPER GREASE-A  
450 grams (15.8 oz) for Crank oil seal



**99000-25350-000**  
WATER RESISTANT GREASE EP2  
250 grams (8.8 oz)



**99000-25140-000**  
MOLY PASTE  
50 grams (1.7 oz)



**99000-22810-000**  
Metal can with a cap  
1 liter

## PTT FLUID

## LIQUID GASKET



**93691-80030-000**  
SILICONE SEAL KE45T  
100 grams



**99000-31140-000**  
1207B (BLACK)  
100 grams (3.5 oz)

## THREAD LOCK



**99000-32020-000**  
1333B (RED)  
50 grams (1.7 oz)

**99000-32160-000**  
1342H (BLUE)  
50 grams (1.7 oz)





## ZINC ANODE for saltwater



**55300-95500-000**

Applicable Model DF8A/9.9A/40A-60A,  
DT25K-40W



**55125-96310-000**

Applicable Model DF25/R/Q



**55321-90J01-000**

Applicable Model DF50AV/60AV/100A-140A

## ALUMINUM ANODE for brackish water, saltwater



**55321-87J01-000**

Applicable Model DF2.5-300AP,  
DT9.9AK/15AK



**55320-94900-000**

Applicable Model DF60A-300AP



**55321-95J00-000**

Applicable Model DF2.5,DF4A-6A

**55321-93J01-000**

Applicable Model DF150-300A

## Ultimate Bath Towel



**99000-990X7-BT2**

Size: H1150mm x W590mm

## Premium Sticker, ULTIMATE



**99000-990AD-S01**

Size: H230mm x W185mm

## MAGNESIUM ANODE for freshwater



**55321-87J11-000**

Applicable Model DF4A-300AP,DT9.9A/15A



**55321-94910-000**

Applicable Model DF70A-300AP

## Anode Bulk Pack

**55321-87810-B50**

Applicable Model DF2.5-300AP,  
DT9.9AK/15AK

50pcs in one package



Recommended STEERING SYSTEM supplied by



www.seastarsolutions.com

Order taking, delivery, technical support and warranty for these products are handled by SeaStar Solutions. Please consult to local SeaStar Solutions distributor or dealer if you need more detail for product information, price, availability and all business terms.

STEERING KIT

**BAYSTAR**



**BAYSTAR OUTBOARD SYSTEM - HK4200A-3**

System comprises:	
BayStar Helm 1.4cu" (22.94cc)	HH4314-3
BayStar Compact Cylinder	HC4645H*
20ft "cut to length" tubing kit	HT4420H
2 x litre SeaStar hydraulic oil	HA5430

\*Note: 115-140hp four stroke 2001 to current model require HC4658H.

**BAYSTAR PLUS**



**BAYSTAR PLUS OUTBOARD SYSTEM - HK4500A-3**

System comprises:	
BayStar Plus Helm 1.4cu" (22.94cc)	HH4514-3
BayStar Compact Cylinder	HC4645H*
2 x litre SeaStar hydraulic oil	HA5430

\*Note: 1 x SeaStar hose kits must be ordered separately

**SEASTAR**



**SEASTAR OUTBOARD SYSTEM - HK6400-3**

System comprises:	
SeaStar Helm 1.7cu" (27.80cc)	HH5271-3
SeaStar Pivot Cylinder	HC5345-3*
2 x litre SeaStar hydraulic oil	HA5430

\*Note: 1 x SeaStar hose kits must be ordered separately

SEASTAR TOURNAMENT SERIES

Extreme heavy duty cylinders and tie bars designed for primarily high performance multiple engine applications. Also available for single engine applications. This heavy duty universal cylinder features reversible bolt on stainless steel tie bar plates that are suitable for use with all SeaStar Helms and SeaStar Power Assist.



SEASTAR TOURNAMENT CYLINDER

Part No.	Description
HC6845	Outboard Tournament Series Cylinder, Front Mount
HC6845S	Outboard Tournament Series Cylinder, Front Mount, c/w Single Engine Hardware Kit

OPTIMUS EPS

A Higher Level Of Engineering Sophistication  
The Optimus EPS system replaces the traditional hydraulic steering system. For single, twin, triple and quad engine applications.

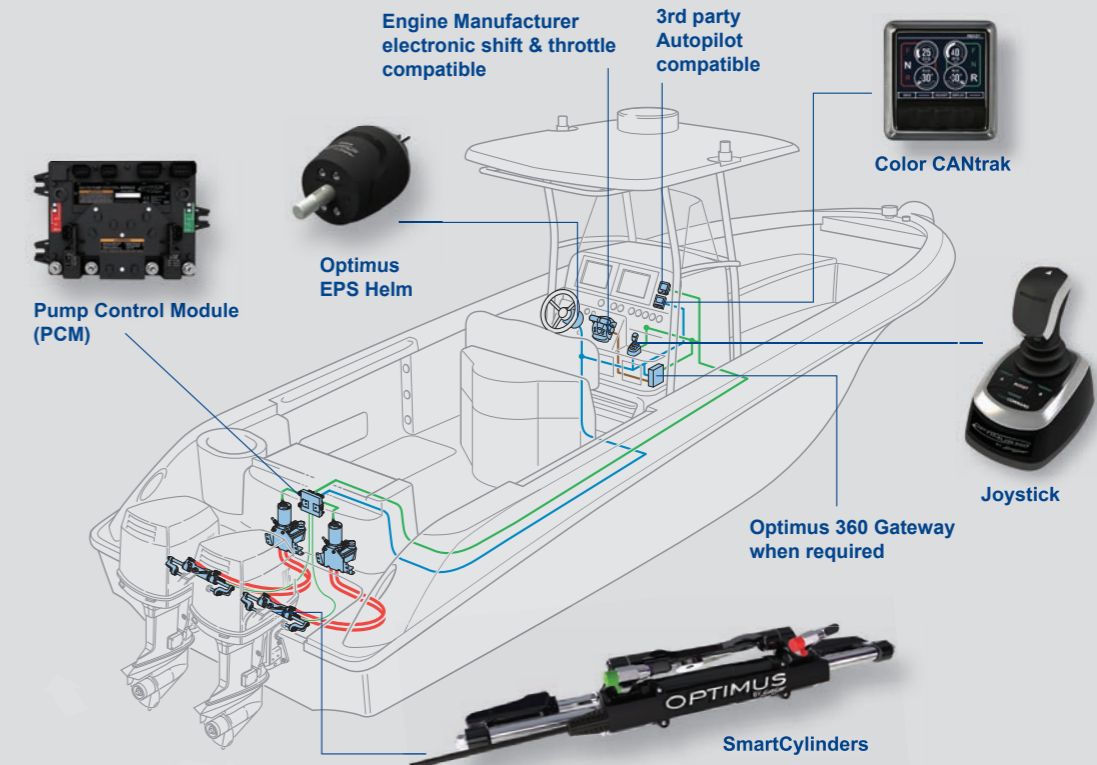


Advantages of Optimus EPS

- No oil at helm
- Boat that steers like a sports car
- Plug and play autopilot compatibility
- No auto pilot pump or rudder feedback unit
- Auto adjusting speed sensitive wheel effort
- Auto adjusting speed sensitive turns lock to lock
- Can be retrofitted to existing mechanical and electronic controlled engines. You do not have to buy new engines
- No tie-bars (twin configuration)
- No liquid tie-bar (CAT)
- On demand pumps which extend battery life
- Components based on existing SeaStar reliability and quality
- NMEA 2000 Certified

OPTIMUS 360

The patented Optimus 360 system builds on the Optimus EPS. Optimus 360 steering/shift/throttle control system is engineered for powerboats with electronic shift and throttle engines, allowing you to use the existing electronic controls. Optimus 360 connects to the existing control head with closed loop processing, providing a very seamless integration.



Optimus EPS + Joystick = Optimus 360 Joystick Control

- Advantages of Optimus 360
- Intuitive high precision Joystick docking with confidence
  - Seamless integration with electronic controlled engines
  - Autopilot ready - just a simple connection
  - Dual station compatible

- Tiebar engines (triple) – less components, simple installation, less cost
- Available as a retrofit or for new engine installation
- All the benefits of Optimus EPS, including auto adjusting steering effort and steering turns lock to lock
- Supports Twin and Triple Suzuki Precision Control Engines

SEASTAR PA



**SEASTAR POWER ASSIST OUTBOARD POWER ASSIST SYSTEM**

System comprises:	
SeaStar Helm 1.7cu" (27.80cc)	HH5271-3
SeaStar Pivot Cylinder	HC5345-3*
2 x litre SeaStar hydraulic oil	HA5430
SeaStar 12v Power Assist Unit	PA1200-2

\*Note: 2 x SeaStar hose kits must be ordered separately

\*For further application information please refer to www.seastarsolutions.com

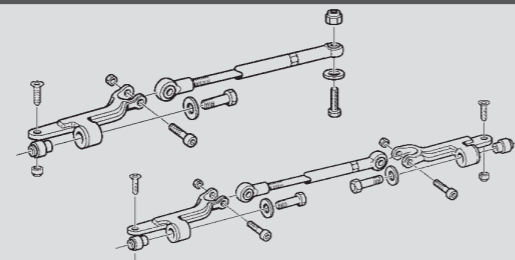
		75 HP	115 HP	150 HP	200 HP	250 HP	300 HP	350 HP+
BAYSTAR	OPTIMUM							
	MAXIMUM							
BAYSTAR PLUS	OPTIMUM							
	MAXIMUM							
SEASTAR OUTBOARD SYSTEM	OPTIMUM							
	MAXIMUM							
SEASTAR TOURNAMENT	OPTIMUM							
	MAXIMUM							
SEASTAR POWER ASSIST OUTBOARD SYSTEM	OPTIMUM							
	MAXIMUM							

As specialists in the art of steering, SeaStar Solutions take the recommendation of steering systems very seriously especially as modern outboard engines become more powerful. Unlike other steering manufacturers we prefer to make systems recommendations based on "optimum comfort"

TIE-BAR KIT

Features

- General purpose system. Single and multiple engine capability. Total power up to 700 HP \*counter-rotating.
- Independent engine tilt for twin engine Easy steering. 5 turns lock to lock steering response.



Applications

Twin Engine Application for Suzuki Outboard Motors

Triple Engine Configuration for Suzuki Outboard Motors

MODEL (4-CYCLE)	CYLINDER	TIE BAR KITS		NOTES
		TWIN ENGINE SINGLE CYL.	TWIN ENGINE DUAL CYL.	
DF40A/50A/60A	HC5358-3	HO6003	HO6002	Requires kit HO5090
DF70A/80A/90A	HC5358-3	HO6003	HO6002	Requires kit HO5090
DF100	HC5358-3	HO6003	HO6002	Requires kit HO5090
DF115/140	HC5358-3	HO6003	HO6002	Requires kit HO5090
DF150/175	HC5345-3	HO6003	HO6002	
DF200/225/250	HC5345-3	HO6003	HO6002	
DF300	HC5345-3	HO6003	HO6002	

MODEL (4-CYCLE)	CYLINDER	TIE BAR KITS		NOTES
		PORT ENGINE TO DRIVE CYL.	STARBOARD ENGINE TO DRIVE CYL.	
DF150/175	HC5345-3	HO6003	HO6002	See notice
DF200/225/250	HC5345-3	HO6003	HO6002	See notice
DF300	HC5345-3	HO6003	HO6002	See notice

