



THE
ULTIMATE
OUTBOARD MOTOR

2022 SUZUKI GENUINE MARINE PARTS AND ACCESSORIES

2022 SUZUKI GENUINE MARINE PARTS AND ACCESSORIES



THE
ULTIMATE
OUTBOARD MOTOR



Please read your Owner's Manual carefully. Remember, boating and alcohol or other drugs don't mix. Always wear a personal flotation device when boating. Please operate your outboard safely and responsibly.

Suzuki encourages you to operate your boat safely and with respect for the marine environment.

Specifications, appearances, equipment, colors, materials and other items of "SUZUKI" products shown in this catalog are subject to change by manufacturers at any time without notice and they may vary depending on local conditions or requirements. Some models are not available in some territories. Each model might be discontinued without notice. Please enquire at your local dealer for details of any such changes. Actual body color might differ from the colors in this brochure.



300 TAKATSUKA-CHO, MINAMI-KU, HAMAMATSU-SHI, SHIZUOKA 432-8611 JAPAN
www.globalsuzuki.com

2022 SUZUKI GENUINE MARINE P & A For EU

Internal use only for EU



INDEX

OPERATION SYSTEMS (04-60)

- 04 SYNCRO-EYE
- 06 SUZUKI PRECISION CONTROL (S.P.C)
- 16 MECHANICAL REMOTE CONTROL
- 20 COMPONENT OF MECHANICAL REMOTE CONTROL
- 24 NEW KEYLESS START SYSTEM
- 30 SUZUKI MULTI-FUNCTION GAUGE (SMG4)
- 38 SUZUKI MULTI-FUNCTION DISPLAY (SMD)
- 52 SUZUKI DIAGNOSTIC SYSTEM MOBILE
- 54 ANALOGUE INSTRUMENT
- 56 STEERING
- 58 ELECTRICAL PARTS
- 60 FUEL SYSTEM

SUZUKI PROPELLERS (62-65)

- 62 WATERGRIP
- 64 PROPELLER LINE-UP

MAINTAINING YOUR SUZUKI (66-71)

- 66 ECSTAR
- 68 CARE & MAINTENANCE ITEM
- 70 MAINTENANCE KITS

APPLICATION CHART (72-73)

RECOMMENDED STEERING KITS (74-77)

Integrated Control System



"SYNCR0-EYE" is a comprehensive system Suzuki has developed which "connects" various devices so that they may work together in synchronization. This innovative system will also improve the control technology of the boat by "sensing" various situations surrounding the boat and be compatible with future technology.





NEW SUZUKI PRECISION CONTROL (S.P.C)

New Remote Control Box

- Integrated "SELECT" and "THROTTLE ONLY" switches
- Integrated Emergency switch (Flush Mount only)
- 1 Lever Operation : This switch allows multiple motor operation with just 1 lever(Dual top mount only)



Single Top Mount



Dual Top Mount



Flush Mount

All New Suzuki Precision Control

Suzuki's best technology lies in the Suzuki Precision Control (S.P.C) for the Drive-By-Wire System. With the S.P.C, a computer electronically sends signals to the engine by wire, eliminating friction and making shifting easier and smoother. The S.P.C also processes and transmits commands in real-time to the actuator. This enables instant, precise throttle response for greater control and accuracy.

This year, we bring the first full model change of the S.P.C system. The new system features:

- Control of up to 6 OBM units.
- Automatic Trim available by using SMD or SMG4.
- All new designs for the Remote Control Box, Switch Panel and Control Panel.

New Switch Panel

- New Panel types : Horizontal and Separate type panel to suit all helm layout needs
- Mounting bolts are concealed for a smooth, luxurious finish
- Easy start for multi-motor boats : Users can start all motors with 1 button/switch. Motors start in order from port to starboard



*Emergency switch not needed if using flush mount

New Control Panel



Find out more!

COMPONENT PARTS

1 R/C BOX BINNACLE MOUNT R/C BOX



67200-98L00-000
for Single Engine



67200-98L10-000
for Dual Engine



67200-98L20-000
for Single Engine

FLUSH MOUNT R/C BOX

2 CONTROL PANEL



37120-98L00-000
for Dual Engine



37120-98L10-000
for Triple Engine



37120-98L20-000
for Quadruple Engine
PORT



37120-98L30-000
for Quadruple Engine,
Quintuple Engine
STBD



37120-98L40-000
for Quintuple Engine
PORT



37120-98L50-000
for Sextuple Engine
PORT



37120-98L60-000
for Sextuple Engine
STBD

3 BUZZER



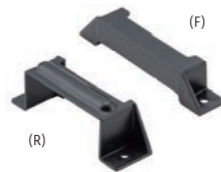
38500-93J90-000

4 BOAT CONTROL MODULE



36770-98L00-000

BCM HOLDER (F) BCM HOLDER (R)



36775-98L00-000
(F)

36776-98L00-000
(R)

BCM CUSHION



33925-98L00-000

5 TERMINAL RESISTOR



33926-98L00-000

6 BATTERY LEAD WIRE



36625-98J10-000
2.2 meters

36625-98J20-000
6.1 meters

7 BCM #1 WIRING HARNESS



36623-98L00-000
for Single Engine

36623-98L30-000
for Dual or Triple Engine

36623-98L40-000
for Quadruple Engine,
Quintuple Engine and
Sextuple Engine

8 HARNESS, EMERGENCY SWITCH EXTENSION



36627-98L10-000

9 SIGNAL CONVERTER UNIT



37140-98L00-000

10 DUAL STATION WIRING HARNESS



36622-98L00-000

11 BCM #2 WIRING HARNESS



36624-98L00-000
for Single Engine

36624-98L10-000
for Dual or Triple Engine

36624-98L20-000
for Quadruple Engine,
Quintuple Engine and
Sextuple Engine

12 ENGINE WIRING HARNESS



36621-98L00-000

13 MAIN SWITCH PANEL VERTICAL



37100-98L10-000
single ignition with
Emergency stop switch

MAIN SWITCH PANEL HORIZONTAL



37100-98L20-000
single ignition with
Emergency stop switch

MAIN SWITCH PANEL



37100-98L00-000
single ignition without
Emergency stop switch

COMPONENT PARTS

13 MAIN SWITCH PANEL VERTICAL



37290-98L10-000
single ignition with
Emergency stop switch

MAIN SWITCH PANEL HORIZONTAL



37290-98L20-000
single ignition with
Emergency stop switch

MAIN SWITCH PANEL (KEYLESS START SYSTEM)



37290-98L00-000
single ignition without
Emergency stop switch

14 EMERGENCY SWITCH PANEL



37803-98L00-000

15 MAIN WIRING HARNESS



36620-98L00-000
6.5 meters for control system

36620-98L10-000
9.5 meters for control system

16 MAIN WIRING HARNESS EXTENSION

36620-98L20-000
2.0 meters for control system

17 TROLL MODE SWITCH PANEL



37860-98L00-000

18 R/C BOX HARNESS EXTENSION



36627-98L00-000
1 meter

19 HARNESS COMP, CAN EXT



36627-98L20-000
for triple engine,
and quadruple engine

EXTRA OPTION

COUNTER SELECT CONNECTOR

36612-98J20-000

Applicable Model DF150AP/175AP

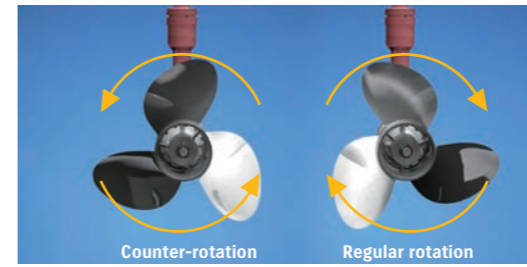
DF200AP/250AP/300AP

Converts to counter rotation specification.



Suzuki Selective Rotation

In multi-outboard installations on large boats, a counter-rotation outboard is usually paired with a regular rotation model to help keep the boat traveling on an even keel and in a straight line. AP Models are built with special counter-rotating gearing in the lower unit, which causes the prop to rotate in the opposite direction. Suzuki Selective Rotation eliminates the need to purchase a dedicated counter-rotation outboard by using a special switch that turns a regular rotation outboard into a counter-rotation model with a counter-rotational propeller. This industry-first is made possible through a unique design of gears, shaft, and bearings in the lower unit that are designed to which can operate reliably and efficiently in either both regular or and counter-rotation directions.

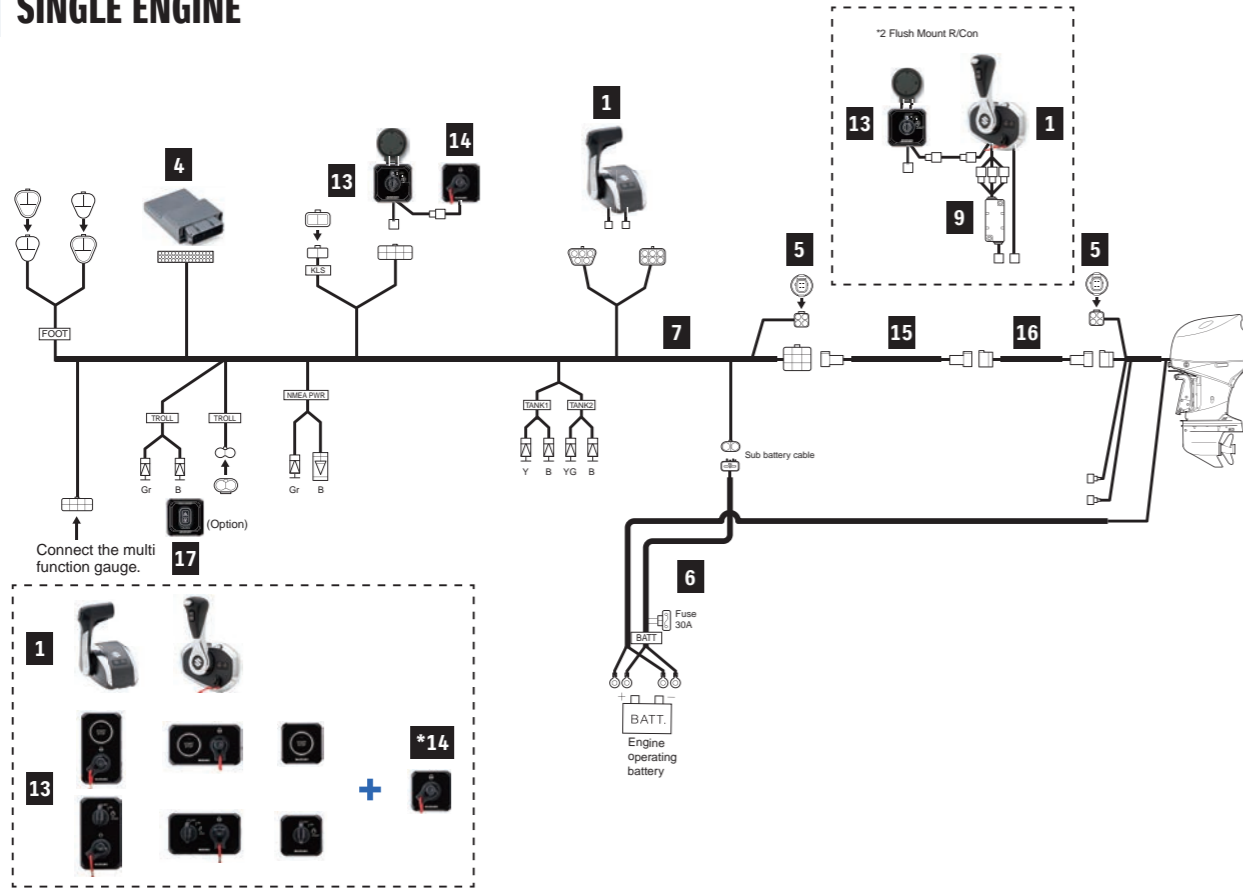


**SUZUKI
SELECTIVE ROTATION**

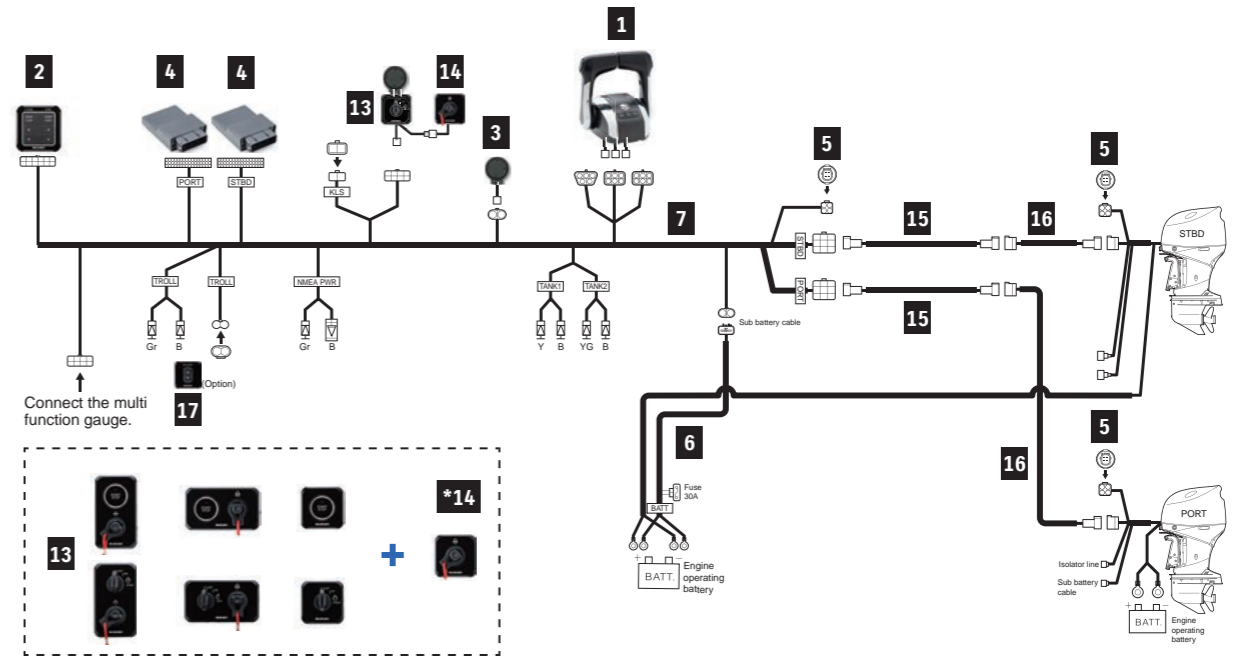


REMOTE-CONTROL KIT

SINGLE ENGINE



DUAL ENGINE



For SINGLE ENGINE (Single Station)				KIT			
PART NUMBER	PART NAME	LENGTH	BINNACLE-MOUNT		FLUSH-MOUNT		
			1st STATION KIT	2nd STATION KIT	1st STATION KIT	2nd STATION KIT	
			67000-98L00-000	67000-98LA0-000	67000-98L10-000	67000-98LB0-000	
1	67200-98L00-000	BINNACLE MOUNT R/C BOX	1	1	-	-	
	67200-98L20-000	FLUSH MOUNT R/C BOX	-	-	1	1	
3	38500-93J90-000	WARNING BUZZER	-	1	-	1	
	09407-08401-000	WARNING BUZZER CLAMP	-	1	-	1	
4	36770-98L00-000	BOAT CONTROL MODULE	1	1	1	1	
	36775-98L00-000	BCM HOLDER (F)	1	1	1	1	
	36776-98L00-000	BCM HOLDER (R)	1	1	1	1	
	33925-98L00-000	BCM CUSHION	1	1	1	1	
5	33926-98L00-000	TERMINAL RESISTOR	2	-	2	-	
6	36625-98J10-000	BATTERY-LEAD	1	-	1	-	
7	36623-98L00-000	BCM #1 WIRING HARNESS	1	-	1	-	
8	36627-98L10-000	HARNESS ASSY,EM SWITCH EXT	-	-	1	1	
9	37140-98L00-000	UNIT COMP,SIGNAL CONVERTER	-	-	1	1	
10	36622-98L00-000	DUAL-STATION WIRING HARNESS	-	1	-	1	
11	36624-98L00-000	BCM #2 WIRING HARNESS	-	1	-	1	
-	09403-13402-000	HARNESS CLAMP	10	10	10	10	
13	37100-98L00-000	MAIN SWITCH PANEL	Select type	-	37100-98L00 or 37290-98L00	-	
	37100-98L10-000	MAIN SWITCH PANEL VERTICAL					
	37100-98L20-000	MAIN SWITCH PANEL HORIZONTAL					
	37290-98L00-000	MAIN SWITCH PANEL (Keyless)					
	37290-98L10-000	MAIN SWITCH PANEL VERTICAL (Keyless)					
37290-98L20-000	MAIN SWITCH PANEL HORIZONTAL (Keyless)	37290-98L00					
14	37803-98L00-000	EMERGENCY SWITCH PANEL	*1	*1	-	-	
15	36620-98L00-000	MAIN WIRING HARNESS	6.5m 9.5m	Select length			
	36620-98L10-000						
16	36620-98L20-000	MAIN WIRING HARNESS EXTENSION	2m	Select if necessary			
17	37860-98L00-000	TROLL MODE SWITCH PANEL (optional)	Optional				
18	36627-98L00-000	HARNESS COMP,R/CON EXT	-	-	*1	*1	

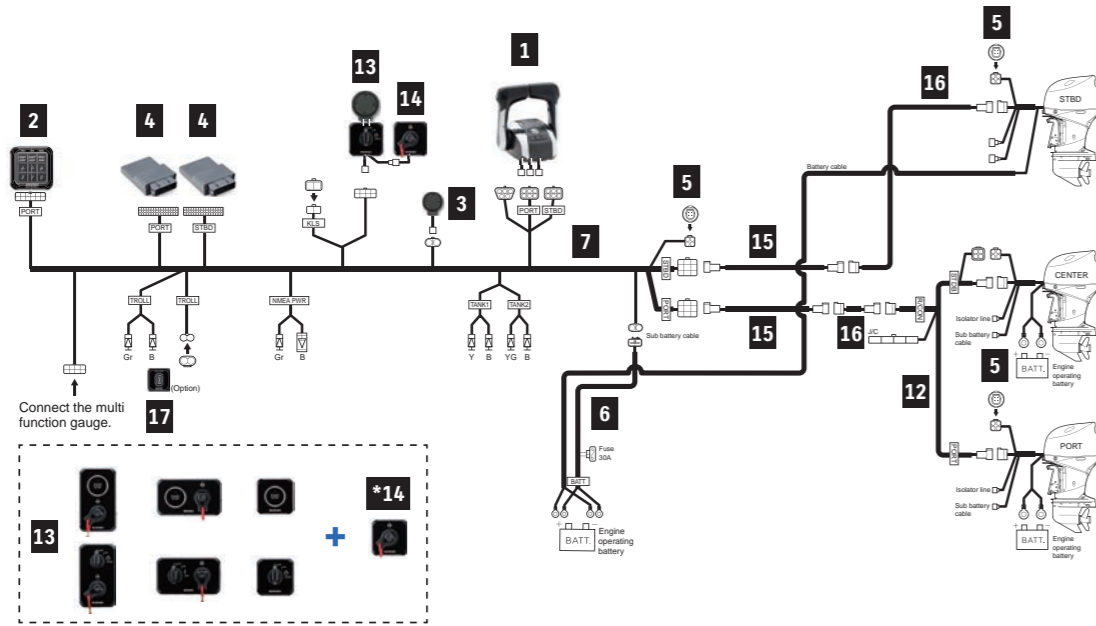
13 to 18 are not included in these kits. Please purchase these items separately.
 13, 15, 16 : Select appropriate type
 14 is required when using 37100-98L00-000 or 37290-98L00-000 with BINNACLE-MOUNT CONTROL KIT.
 17 is optional. Please purchase only if required.
 18 is required when using FLUSH-MOUNT CONTROL KIT.

For DUAL ENGINE				KIT	
PART NUMBER	PART NAME	LENGTH	1st STATION KIT	2nd STATION KIT	
			67000-98L20-000	67000-98LC0-000	
			1	67200-98L10-000	BINNACLE MOUNT R/C BOX
2	37120-98L00-000	CONTROL PANEL	1	1	
3	38500-93J90-000	WARNING BUZZER	1	2	
	09407-08401-000	WARNING BUZZER CLAMP	1	2	
4	36770-98L00-000	BOAT CONTROL MODULE	2	2	
	36775-98L00-000	BCM HOLDER (F)	2	2	
	36776-98L00-000	BCM HOLDER (R)	2	2	
	33925-98L00-000	BCM CUSHION	2	2	
5	33926-98L00-000	TERMINAL RESISTOR	3	-	
6	36625-98J10-000	BATTERY-LEAD	1	-	
7	36623-98L30-000	BCM #1 WIRING HARNESS	1	-	
10	36622-98L00-000	DUAL-STATION WIRING HARNESS	-	1	
11	36624-98L10-000	BCM #2 WIRING HARNESS	-	1	
-	09403-13402-000	HARNESS CLAMP	15	10	
-	36612-98J20-000	CONNECTOR, COUNTER SELECT	1	-	
13	37100-98L00-000	MAIN SWITCH PANEL	Select type	-	
	37100-98L10-000	MAIN SWITCH PANEL VERTICAL			
	37100-98L20-000	MAIN SWITCH PANEL HORIZONTAL			
	37290-98L00-000	MAIN SWITCH PANEL (Keyless)			
	37290-98L10-000	MAIN SWITCH PANEL VERTICAL (Keyless)			
37290-98L20-000	MAIN SWITCH PANEL HORIZONTAL (Keyless)	37290-98L00			
14	37803-98L00-000	EMERGENCY SWITCH PANEL	*1	*1	
15	36620-98L00-000	MAIN WIRING HARNESS	6.5m 9.5m	Select length	
	36620-98L10-000				
16	36620-98L20-000	MAIN WIRING HARNESS EXTENSION	2m	Select if necessary	
17	37860-98L00-000	TROLL MODE SWITCH PANEL (optional)	Optional		
18	36627-98L00-000	HARNESS COMP,R/CON EXT	Select if necessary		

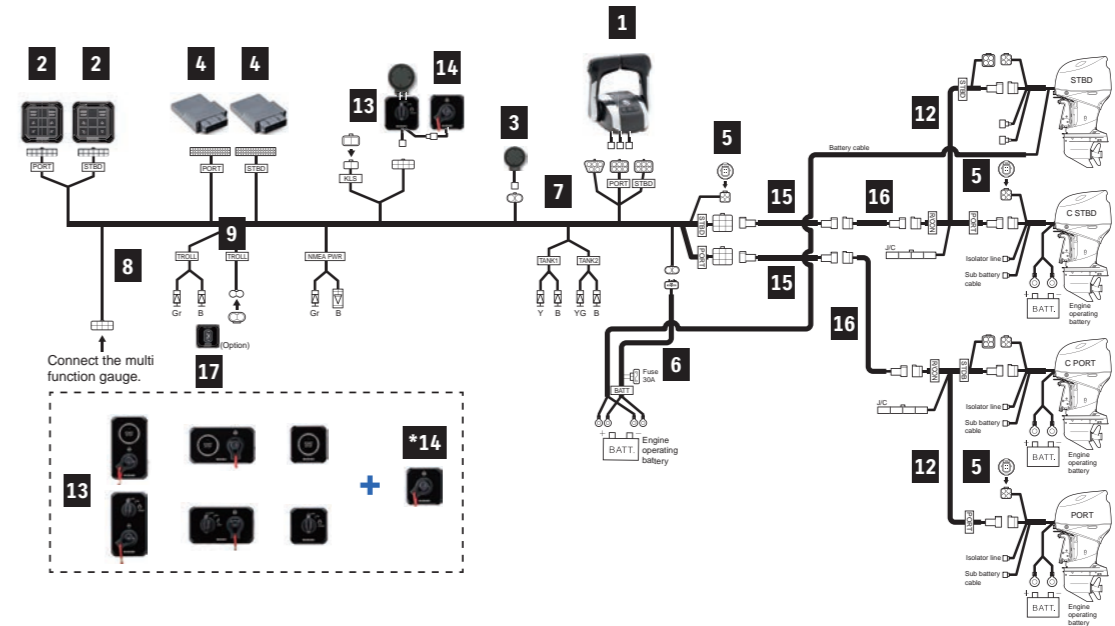
13 to 18 are not included in these kits. Please purchase these items separately.
 13, 15, 16 : Select appropriate type
 14 is required when using 37100-98L00-000 or 37290-98L00-000 with BINNACLE-MOUNT CONTROL KIT.
 17 is optional. Please purchase only if required.

REMOTE-CONTROL KIT

TRIPLE ENGINE



QUADRUPLE ENGINE



For TRIPLE ENGINE				KIT	
PART NUMBER	PART NAME	LENGTH	KIT		
			1st STATION KIT 67000-98L30-000	2nd STATION KIT 67000-98LD0-000	
1	67200-98L10-000	BINNACLE MOUNT R/C BOX	1	1	
2	37120-98L10-000	CONTROL PANEL	1	1	
3	38500-93J90-000	WARNING BUZZER	1	2	
	09407-08401-000	WARNING BUZZER CLAMP	1	2	
4	36770-98L00-000	BOAT CONTROL MODULE	2	2	
	36775-98L00-000	BCM HOLDER (F)	2	2	
	36776-98L00-000	BCM HOLDER (R)	2	2	
	33925-98L00-000	BCM CUSHION	2	2	
5	33926-98L00-000	TERMINAL RESISTOR	3	-	
6	36625-98J10-000	BATTERY-LEAD	1	-	
7	36623-98L30-000	BCM #1 WIRING HARNESS	1	-	
10	36622-98L00-000	DUAL-STATION WIRING HARNESS	-	1	
11	36624-98L10-000	BCM #2 WIRING HARNESS	-	1	
12	36621-98L00-000	ENGINE WIRING HARNESS	1	-	
-	09403-13402-000	HARNESS CLAMP	18	10	
-	36612-98J20-000	CONNECTOR, COUNTER SELECT	1	-	
13	37100-98L00-000	MAIN SWITCH PANEL	Select type	Select type	
	37100-98L10-000	MAIN SWITCH PANEL VERTICAL			
	37100-98L20-000	MAIN SWITCH PANEL HORIZONTAL			
	37290-98L00-000	MAIN SWITCH PANEL (Keyless)			
	37290-98L10-000	MAIN SWITCH PANEL VERTICAL (Keyless)			
	37290-98L20-000	MAIN SWITCH PANEL HORIZONTAL (Keyless)			
14	37803-98L00-000	EMERGENCY SWITCH PANEL	*1	*1	
15	36620-98L00-000	MAIN WIRING HARNESS	6.5m	Select length	
	36620-98L10-000		9.5m		
16	36620-98L20-000	MAIN WIRING HARNESS EXTENSION	2m	Select if necessary	
17	37860-98L00-000	TROLL MODE SWITCH PANEL		Optional	
18	36627-98L00-000	HARNESS COMP, R/CON EXT		Select if necessary	
19	36627-98L20-000	HARNESS COMP, CAN EXT		Select if necessary	

13 to 19 are not included in these kits. Please purchase these items separately.
13, 15, 16 : Select appropriate type
14 is required when using 37100-98L00-000 or 37290-98L00-000 with BINNACLE-MOUNT CONTROL KIT.
17 is optional. Please purchase only if required.

For QUADRUPLE ENGINE				KIT	
PART NUMBER	PART NAME	LENGTH	KIT		
			1st STATION KIT 67000-98L40-000	2nd STATION KIT 67000-98LE0-000	
1	67200-98L10-000	BINNACLE MOUNT R/C BOX	1	1	
2	37120-98L20-000	CONTROL PANEL PORT	1	1	
	37120-98L30-000	CONTROL PANEL STBD	1	1	
3	38500-93J90-000	WARNING BUZZER	1	2	
	09407-08401-000	WARNING BUZZER CLAMP	1	2	
4	36770-98L00-000	BOAT CONTROL MODULE	2	2	
	36775-98L00-000	BCM HOLDER (F)	2	2	
	36776-98L00-000	BCM HOLDER (R)	2	2	
	33925-98L00-000	BCM CUSHION	2	2	
5	33926-98L00-000	TERMINAL RESISTOR	3	-	
6	36625-98J10-000	BATTERY-LEAD	1	-	
7	36623-98L40-000	BCM #1 WIRING HARNESS	1	-	
10	36622-98L00-000	DUAL-STATION WIRING HARNESS	-	1	
11	36624-98L20-000	BCM #2 WIRING HARNESS	-	1	
12	36621-98L00-000	ENGINE WIRING HARNESS	1	-	
-	09403-13402-000	HARNESS CLAMP	20	15	
-	36612-98J20-000	CONNECTOR, COUNTER SELECT	2	-	
13	37100-98L00-000	MAIN SWITCH PANEL	Select type	Select type	
	37100-98L10-000	MAIN SWITCH PANEL VERTICAL			
	37100-98L20-000	MAIN SWITCH PANEL HORIZONTAL			
	37290-98L00-000	MAIN SWITCH PANEL (Keyless)			
	37290-98L10-000	MAIN SWITCH PANEL VERTICAL (Keyless)			
	37290-98L20-000	MAIN SWITCH PANEL HORIZONTAL (Keyless)			
14	37803-98L00-000	EMERGENCY SWITCH PANEL	*1	*1	
15	36620-98L00-000	MAIN WIRING HARNESS	6.5m	Select length	
	36620-98L10-000		9.5m		
16	36620-98L20-000	MAIN WIRING HARNESS EXTENSION	2m	Select if necessary	
17	37860-98L00-000	TROLL MODE SWITCH PANEL		Optional	
18	36627-98L00-000	HARNESS COMP,R/CON EXT		Select if necessary	
19	36627-98L20-000	HARNESS COMP,CAN EXT		Select if necessary	

13 to 19 are not included in these kits. Please purchase these items separately.
13, 15, 16 : Select appropriate type
14 is required when using 37100-98L00-000 or 37290-98L00-000 with BINNACLE-MOUNT CONTROL KIT.
17 is optional. Please purchase only if required.

REMOTE-CONTROL KIT

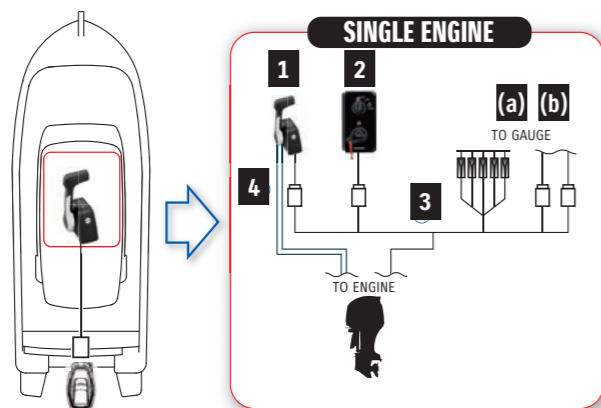
Mechanical Remote Control model users now have the option of choosing to use the new switch panel.

MECHANICAL REMOTE CONTROL



To use the previous panel, please refer to the installation manual for the wiring diagram.

SINGLE ENGINE



For SINGLE ENGINE (Single Station)						
	PART NUMBER	PART NAME	LENGTH	BINNACLE-MOUNT	FLUSH-MOUNT	SIDE-MOUNT
1	67200-88L01-000	BINNACLE MOUNT R/C BOX		1	-	-
	67200-93J34-000	FLUSH MOUNT R/C BOX		-	1	-
	67200-93J70-000	SIDE MOUNT R/C BOX		-	-	1
2	37100-98L00-000	MAIN SWITCH PANEL IG SWITCH ONLY		1 (Select type)		
	37100-98L10-000	MAIN SWITCH PANEL VERTICAL				
	37100-98L20-000	MAIN SWITCH PANEL HORIZONTAL				
	37803-98L00-000	PANEL ASSY, EMERGENCY SWITCH			*1	
3	36620-93J70-000	MAIN WIRING HARNESS	6.5m	1 (Select length)		
	36620-93J80-000		5m			
	36620-93J90-000		8m			
4	67320-93J00-000	R/C CABLE (ORT THROTTLE AND SHIFT CABLES)	2.4m	2 (Select length)		
	67320-93J10-000		3m			
	67320-93J20-000		3.6m			
	67320-93J30-000		4.2m			
	67320-93J40-000		4.8m			
	67320-93J50-000		5.4m			
	67320-93J60-000		6.1m			
	67320-93J70-000		6.7m			
	67320-93J80-000		7.3m			
-	36620-93J11-000	MAIN WIRING HARNESS EXTENSION	2m			Select if necessary
-	36620-93J41-000		3m			Select if necessary

*Only needed if using 37100-98L00

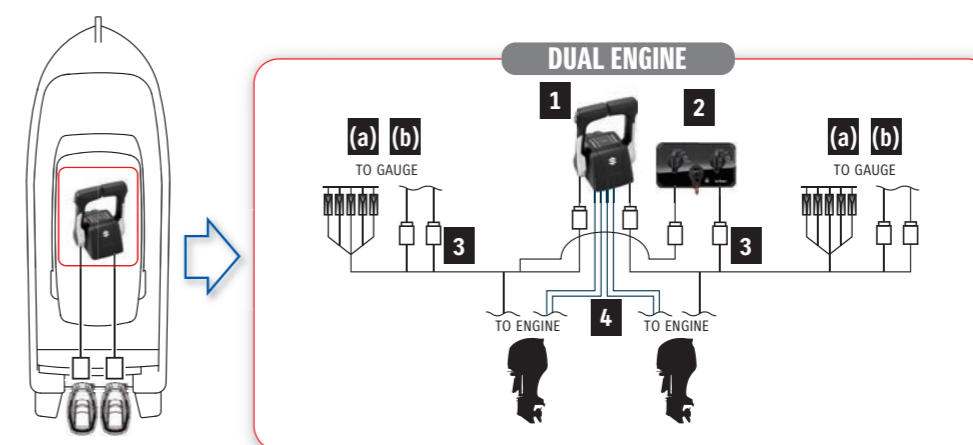
For KEYLESS START SYSTEM

For SINGLE ENGINE				KIT					Required
	PART NUMBER	PART NAME	LENGTH	67000-88L43-000	67000-88L65-000	67000-93JF4-000	67000-93JK6-000	67000-93JM2-000	SINGLE STATION
1	67200-88L01-000	BINNACLE MOUNT R/C BOX		1	1	-	-	-	1
	67200-93J34-000	FLUSH MOUNT R/C BOX		-	-	1	1	-	
	67200-96L11-000	SIDE MOUNT R/C BOX		-	-	-	-	1	
2	37100-96L12-000	SINGLE IGNITION WITH E/S SWITCH		1	1	1	1	*A	1
	36620-93J03-000	MAIN WIRING HARNESS	6.5m	-	1	-	1	1	
	36620-93J54-000		5m	-	-	-	-	-	
36620-93J64-000	8m		-	-	-	-	-		
(a)	34200-93J14-000	TACHOMETER (WHITE)		-	1	-	1	1	1
(b)	34800-93J13-000	TRIM GAUGE (WHITE)		-	1	-	1	1	
4	67320-93J00-000	R/C CABLE (ORT THROTTLE AND SHIFT CABLES)	2.4m	**Select length					2
	67320-93J10-000		3m						
	67320-93J20-000		3.6m						
	67320-93J30-000		4.2m						
	67320-93J40-000		4.8m						
	67320-93J50-000		5.4m						
	67320-93J60-000		6.1m						
	67320-93J70-000		6.7m						
	67320-93J80-000		7.3m						
-	36620-93J11-000	MAIN WIRING HARNESS EXTENSION	2m	**Select if necessary					1
-	36620-93J41-000		3m						

**Not included in kit. Refer to Installation Manual for details.

*A The side mount control box is equipped with ignition switch, emergency switch and warning buzzer with clamp.

DUAL ENGINE



For DUAL ENGINE					Required Qty
	PART NUMBER	PART NAME	LENGTH	Qty	Single Station
1	67200-88L11-000	BINNACLE MOUNT R/C BOX		1	1
2	37100-98L00-000	MAIN SWITCH PANEL IG SWITCH ONLY		2	Select -98L00 OR -98L30
	37100-98L30-000	DUAL IGNITION WITH E/S SWITCH		1	
	37803-98L00-000	PANEL ASSY, EMERGENCY SWITCH		*1	*1
3	36620-93J70-000	MAIN WIRING HARNESS	6.5m	(Select length)	2
	36620-93J80-000		5m		
	36620-93J90-000		8m		
4	67320-93J00-000	R/C CABLE (ORT THROTTLE AND SHIFT CABLES)	2.4m	(Select length)	4
	67320-93J10-000		3m		
	67320-93J20-000		3.6m		
	67320-93J30-000		4.2m		
	67320-93J40-000		4.8m		
	67320-93J50-000		5.4m		
	67320-93J60-000		6.1m		
	67320-93J70-000		6.7m		
	67320-93J80-000		7.3m		
-	36620-93J11-000	MAIN WIRING HARNESS EXTENSION	2m	Select if necessary	-
-	36620-93J41-000		3m		

*Only needed if using 37100-98L00

For KEYLESS START SYSTEM

For DUAL ENGINE				KIT		Required
	PART NUMBER	PART NAME	LENGTH	67000-88L53-000	67000-88L75-000	SINGLE STATION
1	67200-88L11-000	BINNACLE MOUNT R/C BOX		1	1	1
2	37100-96L22-000	DUAL IGNITION WITH E/S SWITCH		1	1	1
	36620-93J03-000	MAIN WIRING HARNESS	6.5m	-	2	2
36620-93J64-000	8m		-	-		
(a)	34200-93J14-000	TACHOMETER (WHITE)		-	2	1
(b)	34800-93J13-000	TRIM GAUGE (WHITE)		-	2	
4	67320-93J00-000	R/C CABLE (ORT THROTTLE AND SHIFT CABLES)	2.4m	**Select length		4
	67320-93J10-000		3m			
	67320-93J20-000		3.6m			
	67320-93J30-000		4.2m			
	67320-93J40-000		4.8m			
	67320-93J50-000		5.4m			
	67320-93J60-000		6.1m			
	67320-93J70-000		6.7m			
	67320-93J80-000		7.3m			
-	36620-93J11-000	MAIN WIRING HARNESS EXTENSION	2m	**Select if necessary	1	1
-	36620-93J41-000		3m			
-	36621-96L00-000	HARNSS ASSY, DUAL KLS ENG		1	1	1
-	36663-96L10-000	WIRE COMP, KLS CAN EXT		1	1	
-	36664-96L00-000	HARNSS ASSY, KLS CAN		1	1	

**Not included in kit. Refer to Installation Manual for details.

COMPONENT OF MECHANICAL REMOTE CONTROL

1 R/C BOX BINNACLE MOUNT R/C BOX



67200-88L01-000
for Single Engine
Applicable Model DF8A-250

BINNACLE MOUNT R/C BOX DUAL



67200-88L11-000
for Dual Engine
Applicable Model DF70A-250

FLUSH MOUNT R/C BOX



67200-93J34-000
for Single Engine
Applicable Model DF8A-250

SIDE MOUNT REMOTE CONTROL BOX



67200-91J31-000
for Single Engine, without IGN SW
Applicable Model DF4A-6A

67200-94J40-000
for Single Engine. With warning buzzer
with PTT switch
Applicable Model DF8A-30A

67200-93J70-000
for Single Engine. With PTT switch
Applicable Model DF9.9B-250

67200-96L11-000
for Single Engine. With PTT switch
for Keyless Start System
Applicable Model DF70A-150/175/200A

2 IGNITION SWITCH PANEL



37100-98L10-000
Single ignition with
Emergency stop switch
Applicable Model DF9.9B-250



37100-98L20-000
Single ignition with
Emergency stop switch
Applicable Model DF9.9B-250



37100-98L30-000
Dual ignition with
Emergency stop switch
Applicable Model DF9.9B-250



37100-98L00-000
Single ignition
Applicable Model DF9.9B-250

3 MAIN WIRING HARNESS



If using the Keyless start system, please use the previous harness and panels. Please refer to the installation manual for details.

36620-93J70-000
6.5 meters for Control system
Applicable Model DF9.9B/20A/40A-250

36620-93J80-000
5.0 meters for Control system
Applicable Model DF40A-250

36620-93J90-000
8.0 meters for Control system
Applicable Model DF40A-250

36620-89L10-000
6.5 meters for Control system
Applicable Model DF9.9B/15A/20A

36620-94L20-000
6.5 meters for Control system
Applicable Model DF25A/30A

MAIN WIRING HARNESS EXTENSION

36620-93J11-000
2.0 meters for Control system
Applicable Model DF9.9B-250

36620-93J41-000
3.0 meters for Control system
Applicable Model DF9.9B-250

4 REMOTE-CONTROL CABLE (ORT THROTTLE AND SHIFT CABLES)



67320-93J00-000
8 feet 2.44 meters
Applicable Model DF4A-250

67320-93J10-000
10 feet 3.05 meters
Applicable Model DF4A-250

67320-93J20-000
12 feet 3.66 meters
Applicable Model DF4A-250

67320-93J30-000
14 feet 4.27 meters
Applicable Model DF4A-250

67320-93J40-000
16 feet 4.88 meters
Applicable Model DF4A-250

67320-93J50-000
18 feet 5.49 meters
Applicable Model DF4A-250

67320-93J60-000
20 feet 6.10 meters
Applicable Model DF4A-250

67320-93J70-000
22 feet 6.71 meters
Applicable Model DF4A-250

67320-93J80-000
24 feet 7.32 meters
Applicable Model DF4A-250

5 SPACER KIT for REMOTE CONTROL BOX



67500-88L00-000
for Single Binnacle-mount type
Applicable Model DF8A-250



67500-88L10-000
for Dual Binnacle-mount type
Applicable Model DF70A-250

6 BATTERY LEAD

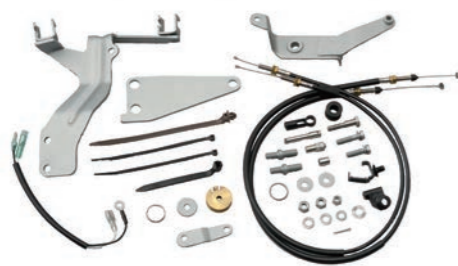


36625-93J10-000
6.7 meters
Applicable Model DF100A-200A/200-250

36625-93J01-000
3.9 meters
Applicable Model DF100A-200A/200-250

7 REMOTE-CONTROL ATTACHING KIT

Converts ME model to REMOTE-CONTROL model.



67101-97L00-000
Applicable Model DF4A-6A

67130-89L22-000
Applicable Model DF9.9B/15A/20A

67130-94L03-000
Applicable Model DF25A/30A

67130-94L13-000
Applicable Model DF25ATH/30ATH

67130-99J02-000
CLAMP BRACKET SET (41100-99J00-0EP) is required for installing 67130-99J02-000.

Applicable Model DF8A/9.9A

8 TWIN REMOTE-CONTROL ATTACHMENT KIT

CLAMP BRACKET SET



67140-95601-000
Applicable Model DF9.9B-30A/100A-250

41100-99JL0-YAY
Applicable Model DF8A/9.9A

9 EMERGENCY SWITCH PANEL

10 PTT SWITCH PANEL

(a) TACHOMETER

(b) TRIM GAUGE



37803-98L00-000
Applicable Model DF9.9B-350A



37805-88L00-000
Applicable Model DF40A-250



34200-93J14-000
FACE : WHITE



34800-93J13-000
FACE : WHITE

EXTRA OPTIONS

TROLL MODE SWITCH PANEL



37860-98L00-000
Applicable Model DF40A-200A/
150AP-300AP/
300B/325A/350A
Activates SUZUKI Troll Mode System and controls RPM from idling engine speed up to 1200rpm at every 50rpm.



SUZUKI TROLL MODE SYSTEM

Troll Mode Switch:

An option on for Remote Control models from DF40A and over, this system allows the user to adjust engine speed in 50rpm increments, giving highly precise control at low revs. With its own tachometer and control switch, it works alongside our multi-function gauges and analogue gauges.

(Tiller Handle Models from DF40A and over have Suzuki Troll Mode System as standard equipment)

*Not Applicable for DF250/225/200, DF250W, DF150W, DF90AWQH

RIGGING TUBE



990C0-20010-000
Applicable Model DF70A-DF350A
*Connect to the hose adapter equipped on the engine



NEW KEYLESS START SYSTEM

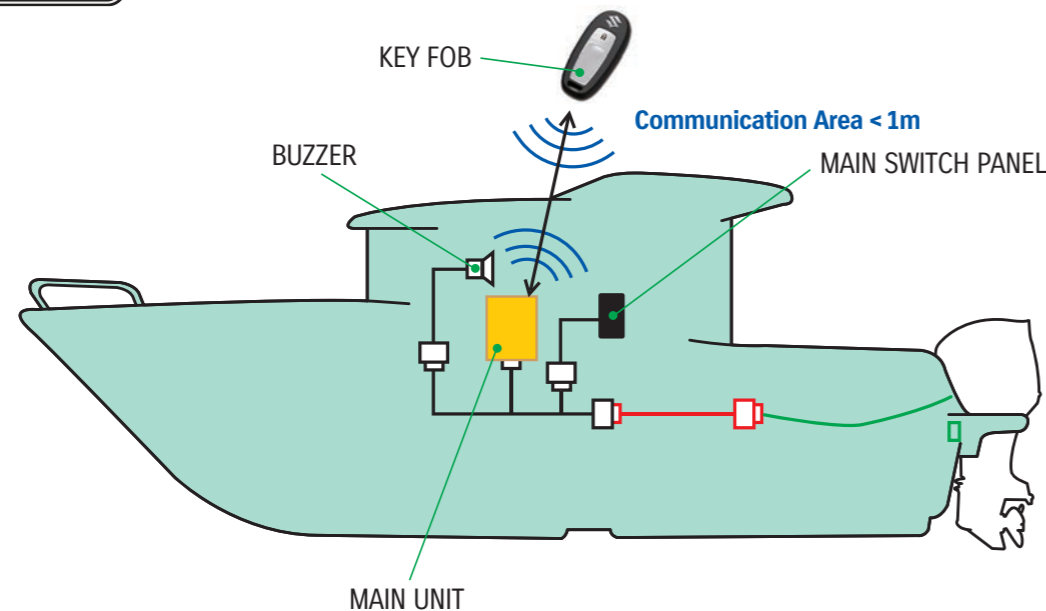


HIGH SECURITY

- The Suzuki Keyless Start System features an immobilizer function for added peace of mind. IC access codes installed in the key fob and engine must match for the engine to start, preventing any wrong key from starting the engine. It also means the engine will not start on any other boat, discouraging theft of the engine as well.

EASY OPERATION

- The key fob is easy to carry and one is all you need to enjoy stress-free starts for greater boating pleasure. The System requires no mechanical key, so the key fob remains safely in your pocket. It is also waterproof and floats in case it accidentally falls into the water. 2 key fobs are included as standard per system. Dealers can program up to 4 additional fobs to allow multiple users (total 6 fobs per boat)



Find out more by watching our videos

NEW FEATURES

The new Keyless Start System introduces new features for better convenience of both users and dealers, while still providing high security

New Design

New panel design in sleek black. Addition of Horizontal-type and Separate-type panels.

One-push start/stop for multiple engines

All engines start in order with just one push (max 6 engines). No need to push the button multiple times.



Easy Setup and Passcode entry (with SMG4 or SMD)

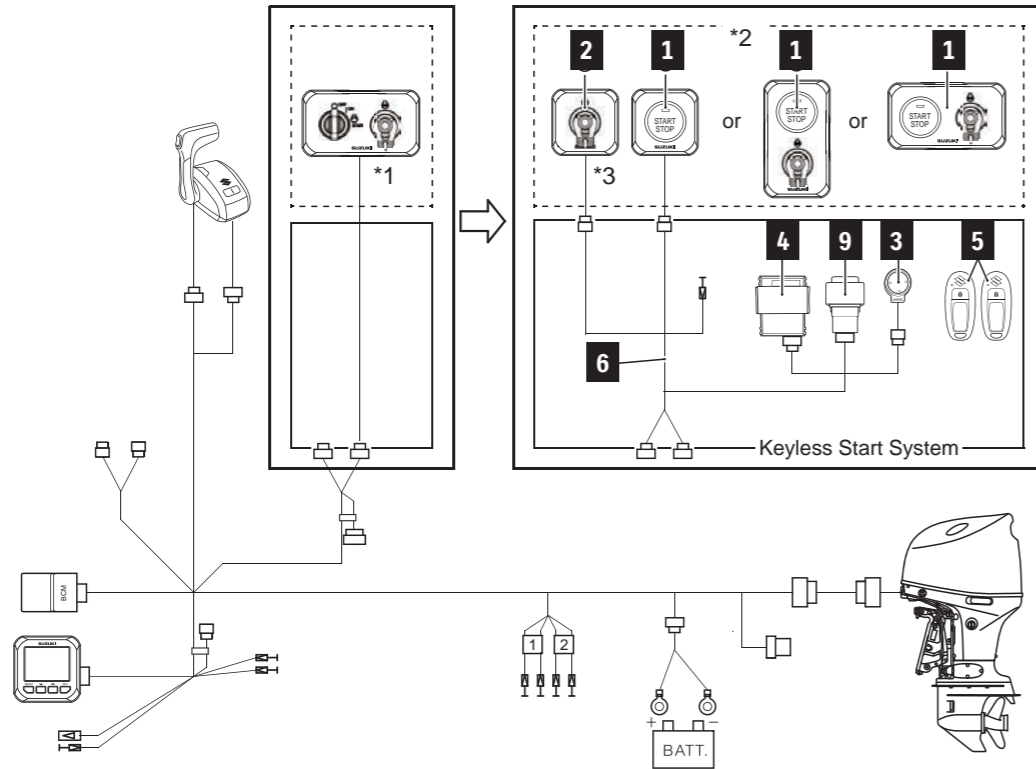
The new system has a menu selection for easy key fob registration. Also in case of emergency, users can start the engine by directly inputting the passcode into SMG4 or SMD.



INSTALLATION DIAGRAM

KEYLESS START SYSTEM for S.P.C

*SMG4 or SMD is required to use



For S.P.C				KIT		Total Required Quantity			
				CONTROLLER SET					
				37105-98L01 (433 MHz)					
				37105-98L10 (315 MHz)					
	PART NUMBER	PART NAME	LENGTH			SINGLE	DUAL	TRIPLE	QUAD
1	37290-98L00-000	MAIN SWITCH PANEL	-	-	-	1	1	1	1
	37290-98L10-000	MAIN SWITCH PANEL VERTICAL	-	-	-	1	1	1	1
	37290-98L20-000	MAIN SWITCH PANEL HORIZONTAL	-	-	-	1	1	1	1
2	37803-98L00-000	EMERGENCY SWITCH PANEL	-	-	-	(1)	(1)	(1)	(1)
3	38500-93J90-000	BUZZER	-	1	1	1	1	1	1
4	37171-98L01-000	KEYLESS CONTROL UNIT	-	1	1	1	1	1	1
	37171-98L10-000	KEYLESS CONTROL UNIT	-	1	1	1	1	1	1
	37172-96L03-000	KEYLESS CONTROL UNIT	-	1	1	1	1	1	1
5	37172-96L11-000	KEY FOB	-	2	2	2	2	2	2
	37172-96L03-000	KEY FOB	-	2	2	2	2	2	2
	37172-96L11-000	KEY FOB	-	2	2	2	2	2	2
6	36623-98LA0-000	KEYLESS CONTROL HARNESS	-	1	1	1	1	1	1
9	38860-96L01-000	RELAY ASSY, KLS	-	1	1	1	1	1	1
10	37173-96L10-000	HOLDER, KLS PARTS	-	1	1	1	1	1	1
11	32980-38F00-000	HOLDER	-	1	1	1	1	1	1
12	32851-93J00-000	CUSHION	-	1	1	1	1	1	1
-	09407-14407-000	CLAMP, KLS HARNESS	-	1	1	1	1	1	1
-	37117-96L00-000	DECAL, KLS	-	2	-	-	-	-	-

■ *() part is used when using 37290-98L00-000.

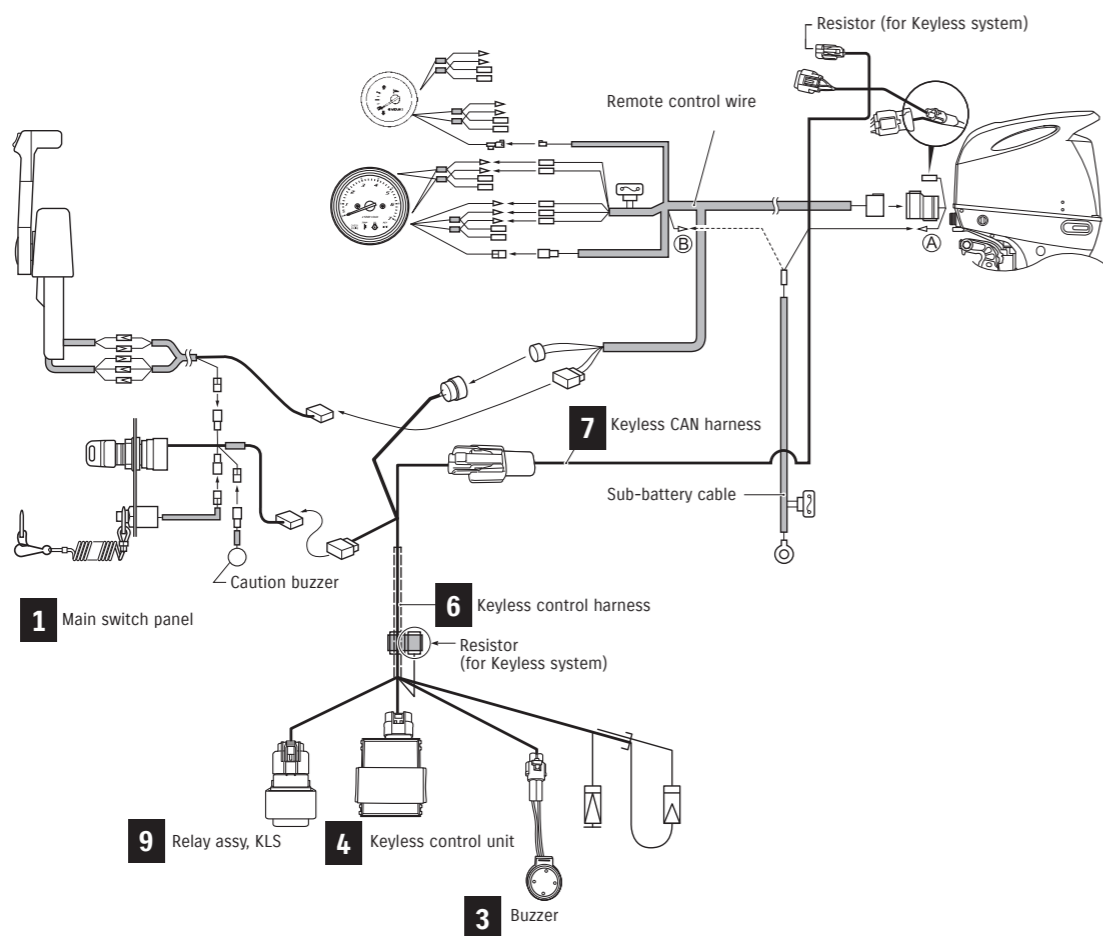
COMPONENT PARTS



	PART NUMBER	PART NAME	LENGTH	NOTE
	37290-98L00-000	MAIN SWITCH PANEL	-	
1	37290-98L10-000	MAIN SWITCH PANEL VERTICAL	-	
	37290-98L20-000	MAIN SWITCH PANEL HORIZONTAL	-	
	37290-98L00-000	MAIN SWITCH PANEL	-	Used when using 37290-98L00-000
2	37803-98L00-000	EMERGENCY SWITCH PANEL	-	
3	38500-93J90-000	BUZZER	-	
4	37171-98L01-000	KEYLESS CONTROL UNIT	-	433MHz
	37171-98L10-000	KEYLESS CONTROL UNIT	-	315MHz
	37172-96L03-000	KEYLESS CONTROL UNIT	-	433MHz
5	37172-96L03-000	KEY FOB	-	433MHz
	37172-96L11-000	KEY FOB	-	315MHz
6	36623-98LA0-000	KEYLESS CONTROL HARNESS	-	
9	38860-96L01-000	RELAY ASSY, KLS	-	
10	37173-96L10-000	HOLDER, KLS PARTS	-	
11	32980-38F00-000	HOLDER	-	
12	32851-93J00-000	CUSHION	-	

INSTALLATION DIAGRAM

KEYLESS START SYSTEM for MECHANICAL REMOTE CONTROL



COMPONENT PARTS



For MECHANICAL REMOTE CONTROL				KIT		Total Required Quantity	
				CONTROLLER SET	HARNESS SET	SINGLE	DUAL
PART NUMBER	PART NAME	LENGTH	37170-96L07 (433 MHz)	37105-96L13			
1	37100-96L12-000	MAIN SWITCH PANEL	-	-	1	-	
	37100-96L22-000		-	-	-	1	
3	38500-93J90-000	BUZZER	-	1	1	1	
	37171-96L03-000		-	-	-	1	
4	37171-96L12-000	KEYLESS CONTROL UNIT	-	1	1	1	
	37172-96L03-000		-	-	-	1	
5	37172-96L11-000	KEY FOB	-	2	2	2	
	36623-96L11-000		-	-	-	1	
6	36623-96L11-000	KEYLESS CONTROL HARNESS	-	1	1	1	
7	36662-96L10-000	KEYLESS CAN HARNESS	6.5m	1	1	1	
8	36664-96L00-000	CAN EXTENSION HARNESS	0.8m	-	1	1	
9	38860-96L01-000	RELAY ASSY, KLS	-	1	1	1	
10	37173-96L10-000	HOLDER, KLS PARTS	-	1	1	1	
13	36621-96L00-000	HARNESS ASSY, DUAL KLS ENG	-	-	-	1	
14	36663-96L10-000	WIRE COMP, KLS CAN EXT	2.0m	-	-	1	
11	32980-38F00-000	HOLDER	-	1	1	1	
12	32851-93J00-000	CUSHION	-	1	1	1	
-	37117-96L00-000	DECAL, KLS	-	2	-	-	

	PART NUMBER	PART NAME	LENGTH	NOTE
1	37100-96L12-000	MAIN SWITCH PANEL	-	for SINGLE ENGINE
	37100-96L22-000		-	for DUAL ENGINE
3	38500-93J90-000	BUZZER	-	
4	37171-96L03-000	KEYLESS CONTROL UNIT	-	433MHz
	37171-96L12-000		-	315MHz
5	37172-96L03-000	KEY FOB	-	433MHz
	37172-96L11-000		-	315MHz
6	36623-96L11-000	KEYLESS CONTROL HARNESS	-	
7	36662-96L10-000	KEYLESS CAN HARNESS	6.5m	
8	36664-96L00-000	CAN EXTENSION HARNESS	0.8m	
9	38860-96L01-000	RELAY ASSY, KLS	-	
10	37173-96L10-000	HOLDER, KLS PARTS	-	
11	32980-38F00-000	HOLDER	-	
12	32851-93J00-000	CUSHION	-	

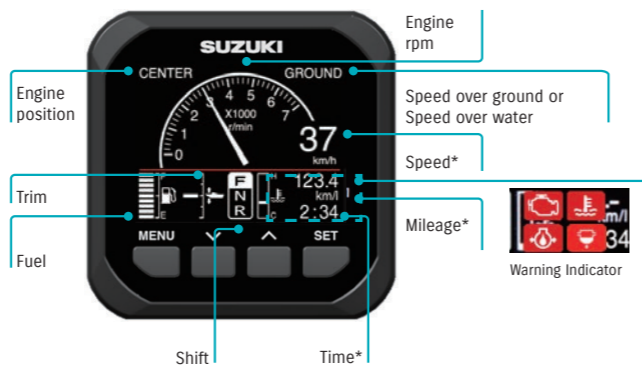
SUZUKI MULTI-FUNCTION GAUGE

The Suzuki Multi-function Gauge (SMG4) shows the right information, at the right time, all on one user-friendly screen.

Users can view a wide range of important information, including engine rpm, speed and trim angle, engine temp and fuel economy in 13 different measurement units, and total fuel flow for multiple engine installations.

The SMG4 also shows alerts from the engine's sensors and warning systems.

ANALOGUE TACHO & SPEED MODE



* Speed sensor or GPS module will be required to display Speed, Mileage, Trip distance, Time information.

TACHO MODE



- Fuel flow (instantaneous)
- Mileage* (instantaneous and average)
- Trip time, Trip distance*
- Engine hour, Voltage, Water temp and more...

	GPS Module	Speed sensor
Speed	✓	✓ (SOW)
Mileage	✓	✓ (SOW)
Trip distance	✓	✓ (SOW)
Time	✓	N/A

(SOW): Speed over water

TROLL MODE FUNCTION



- Allows you to control your troll mode from the Multi-Function Gauge

This function is available from year 2019 models. Can only be used by models which are adapted to troll mode.

DISPLAY MODES

DIGITAL TACHO & SPEED MODE



ANALOGUE SPEED MODE



*Night mode screen

FUEL MODE



NEW FEATURES

The SMG4 has 3 key new features.

Multilingual menu

SMG4 is now available in 13 languages: English, French, Italian, German, Spanish, Swedish, Norwegian, Finnish, Dutch, Portuguese, Danish, Russian, Japanese.



Automatic Trim

Automatically adjusts trim angle with OBM RPM



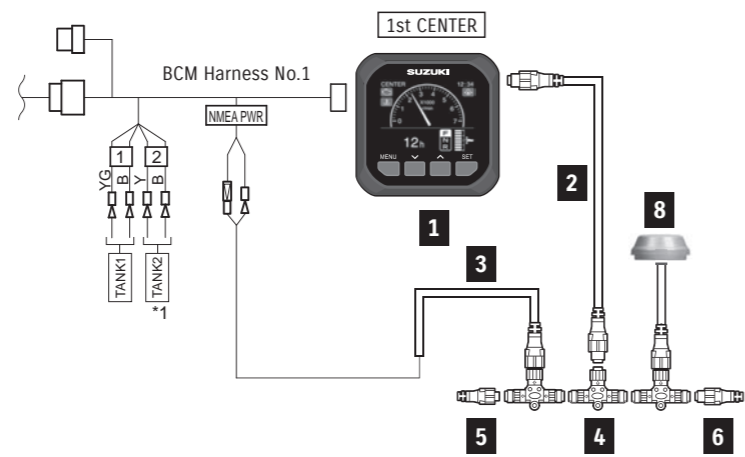
Demo mode

Shows preinstalled data to demonstrate function of selected screen. (Ideal for boat shows and exhibitions)

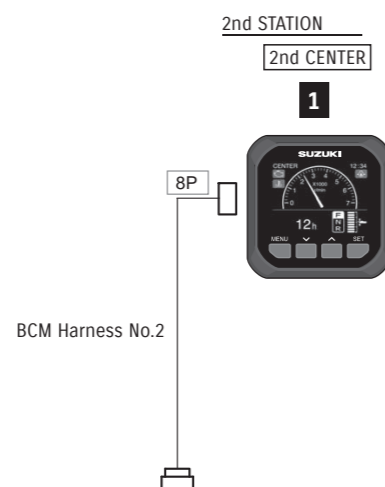


INSTALLATION DIAGRAM

S.P.C & SINGLE ENGINE SINGLE STATION



DUAL STATION



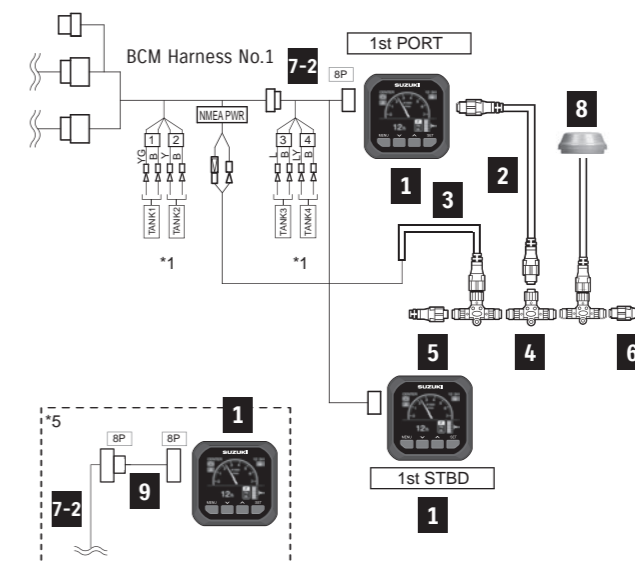
TOTAL REQUIREMENT LIST

PART NUMBER	PART NAME	LENGTH	Total Required Quantity					
			SINGLE STATION	SINGLE STATION (Using Speed over water)	SINGLE STATION (Using Speed over ground)	DUAL STATION	DUAL STATION (Using Speed over water)	DUAL STATION (Using Speed over ground)
1	34011-96L41-000 GAUGE ASSY, MULTI	-	1	1	1	2	2	2
-	36001-88L00-000 CABLE KIT	-	-	1	1	1	1	1
8	990C0-88317-000 SENSOR ASSY, PADDLE WHEEL	-	-	1	-	-	1	-
8	990C0-88122-000 GPS RECEIVER MODULE	-	-	-	1	-	-	1

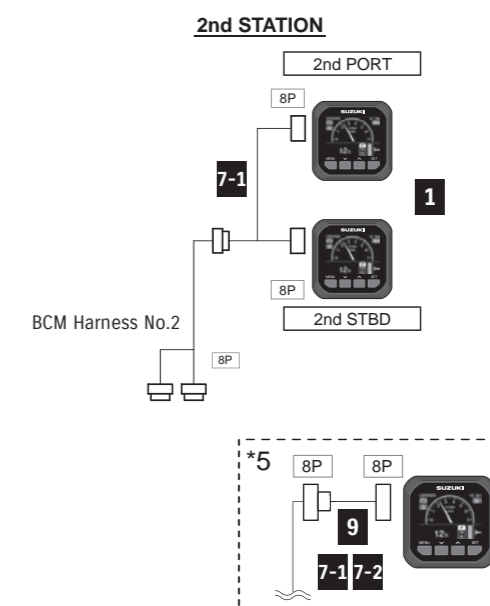
CABLE KIT COMPONENT

PART NUMBER	PART NAME	LENGTH	Quantity
36001-88L00-000	CABLE KIT	-	-
2	990C0-88104-000 WIRE COMP, EXTENSION	0.6m	1
3	990C0-88112-000 HARNESS ASSY, NETWORK POWER	-	1
4	990C0-88110-000 CONNECTOR COMP, BRANCH	-	1
5	990C0-88113-000 UNIT COMP, RESISTOR FEMALE	-	1
6	990C0-88114-000 UNIT COMP, RESISTOR MALE	-	1

S.P.C & DUAL ENGINE SINGLE STATION



DUAL STATION

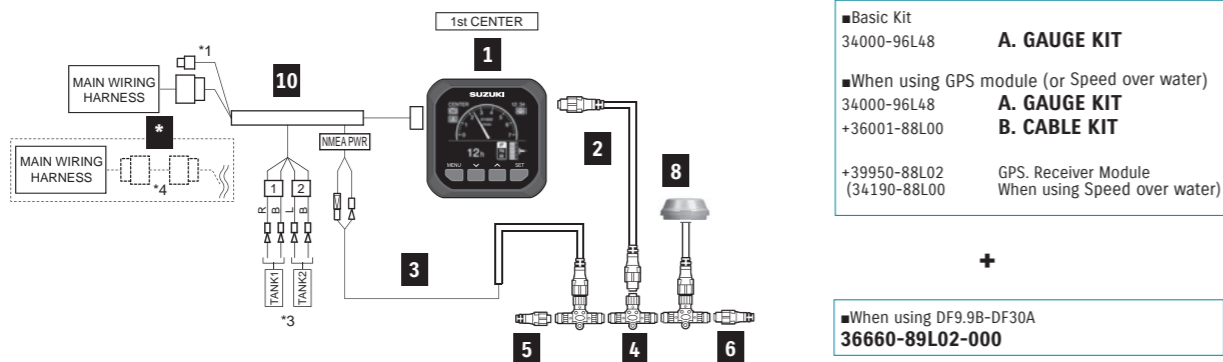


TOTAL REQUIREMENT LIST

PART NUMBER	PART NAME	LENGTH	Total Required Quantity					
			SINGLE STATION	SINGLE STATION (Using Speed over water)	SINGLE STATION (Using Speed over ground)	DUAL STATION	DUAL STATION (Using Speed over water)	DUAL STATION (Using Speed over ground)
1	34011-96L41-000 GAUGE ASSY, MULTI	-	2	2	2	4	4	4
-	36001-88L00-000 CABLE KIT	-	-	1	1	1	1	1
7-1	36667-96L40-000 WIRE COMP, GAUGE ADAPTER	-	Choose 1			2*		
7-2	36667-96L50-000 WIRE COMP, GAUGE ADAPTER (FOR TANK3-4)	-	Choose 1			2*		
8	990C0-88317-000 SENSOR ASSY, PADDLE WHEEL	-	-	1	-	-	1	-
8	990C0-88122-000 GPS RECEIVER MODULE	-	-	-	1	-	-	1
9	36667-96L60-000 WIRE COMP, GAUGE EXT	0.6m	-	-	-	Optional		

* 36667-96L40 x 1 and 36667-96L50 x 1 or 36667-96L40 x 2

MECHANICAL CONTROL & SINGLE ENGINE

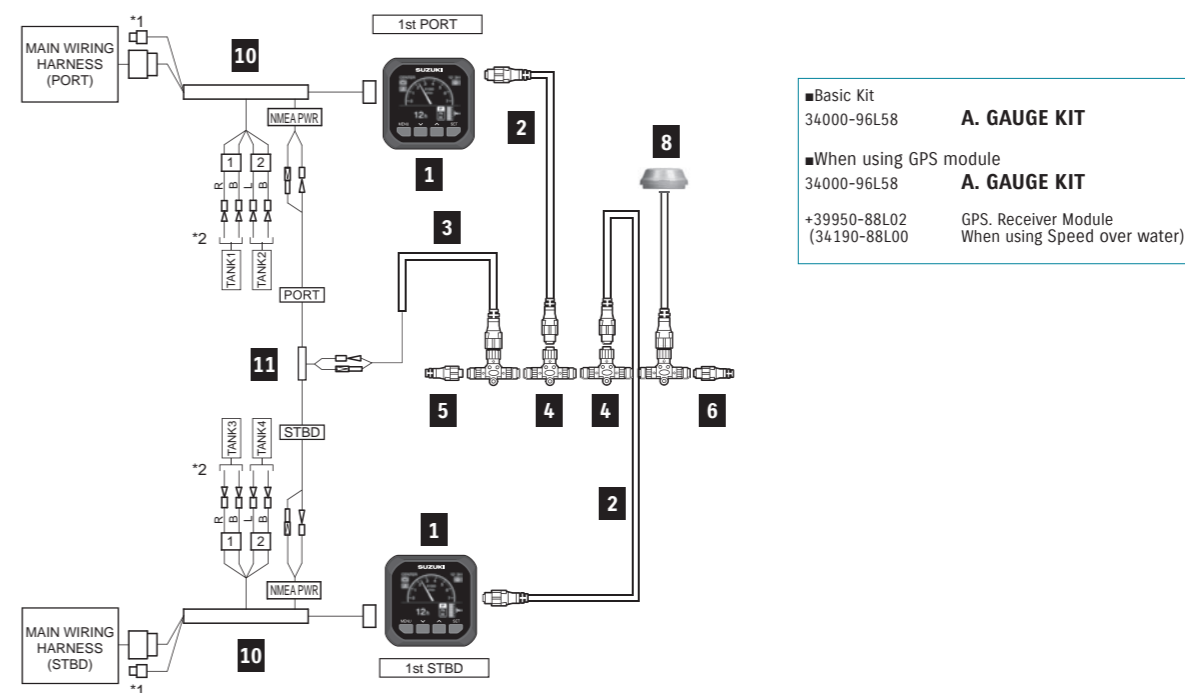


For MECHANICAL CONTROL & SINGLE ENGINE				KIT		Total Required Quantity A (+ B) << >>
PART NUMBER	PART NAME	LENGTH	A. GAUGE KIT 34000-96L48-000	B. CABLE KIT 36001-88L00-000		
1	34011-96L41-000	GAUGE ASSY, MULTI	1	-	1	
2-1	990C0-88104-000	WIRE COMP, EXTENSION	-	1	(1)	
2-2	990C0-88105-000	WIRE COMP, EXTENSION	-	-	(1)	
3	990C0-88112-000	HARNESS ASSY, NETWORK POWER	-	1	(1)	
4	990C0-88110-000	CONNECTOR COMP, BRANCH	-	1	(1)	
5	990C0-88113-000	UNIT COMP, RESISTOR FEMALE	-	1	(1)	
6	990C0-88114-000	UNIT COMP, RESISTOR MALE	-	1	(1)	
8	990C0-88317-000	SENSOR ASSY, PADDLE WHEEL	-	-	(1)	
	990C0-88122-000	GPS RECEIVER MODULE	-	-	(1)	
10	36661-96L30-000	ADAPTER COMP, GAUGE	1	-	1	
*	36660-89L02-000	SET, ENG TO INTERFACE WIRE	-	-	<1>	

■ *() parts are required when using GPS module or Speed sensor.
 ■ * < > part are required when using with DF9.9B to 30A.



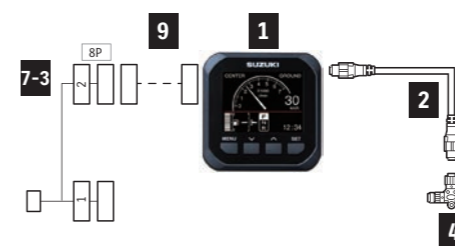
MECHANICAL CONTROL & DUAL ENGINE



For MECHANICAL CONTROL & DUAL ENGINE				KIT	Total Required Quantity A (+ B)
PART NUMBER	PART NAME	LENGTH	A. GAUGE KIT 34000-96L58-000		
1	34011-96L41-000	GAUGE ASSY, MULTI	2	2	
2-1	990C0-88104-000	WIRE COMP, EXTENSION	2	2	
2-2	990C0-88105-000	WIRE COMP, EXTENSION	-	2	
3	990C0-88112-000	HARNESS ASSY, NETWORK POWER	1	1	
4	990C0-88110-000	CONNECTOR COMP, BRANCH	2	2	
5	990C0-88113-000	UNIT COMP, RESISTOR FEMALE	1	1	
6	990C0-88114-000	UNIT COMP, RESISTOR MALE	1	1	
8	990C0-88317-000	SENSOR ASSY, PADDLE WHEEL	-	(1)	
	990C0-88122-000	GPS RECEIVER MODULE	-	(1)	
10	36661-96L30-000	ADAPTER COMP, GAUGE	2	2	
11	36665-87L10-000	ADAPTER, GAUGE FOR MULTI	1	1	

■ *() parts are required when using GPS module or Speed sensor.

ADDITIONAL GAUGE COMPONENTS (MECHANICAL)



ADDITIONAL GAUGE COMPONENTS (MECHANICAL)				Total Required Quantity
PART NUMBER	PART NAME	LENGTH		
1	34011-96L41-000	GAUGE ASSY, MULTI	1	
2-1	990C0-88104-000	WIRE COMP, EXTENSION	1	
2-2	990C0-88105-000	WIRE COMP, EXTENSION	1	
4	990C0-88110-000	CONNECTOR COMP, BRANCH	1	
7-3	36667-96L11-000	WIRE COMP, DUAL GAUGE ADAPTER	1	
9	36667-96L60-000	WIRE, GAUGE EXT	(1)	

Please use "36667-96L60-000 WIRE, GAUGE EXT" as an extension between "34011-96L41" and "36667-96L11"

1 GAUGE ASSY,
MULTI



34011-96L41-000

2 WIRE COMP,
EXTENSION



2-1 990C0-88104-000
0.6 meters

2-2 990C0-88105-000
1.8 meters

3 HARNESS ASSY,
NETWORK POWER



990C0-88112-000

4 CONNECTOR COMP,
BRANCH



990C0-88110-000

5 UNIT COMP,
RESISTOR FEMALE



990C0-88113-000

6 UNIT COMP,
RESISTOR MALE



990C0-88114-000

7 WIRE COMP,
GAUGE ADAPTER



7-1 36667-96L40-000

7-2 36667-96L50-000
for Tank 3-4

7-3 36667-96L11-000
for Mechanical Control

8 SENSOR ASSY,
PADDLE WHEEL



990C0-88317-000

GPS RECEIVER
MODULE



990C0-88122-000

9 WIRE COMP, GAUGE EXT (0.6m)
0.6 meters

36667-96L60-000
0.6 meters

10 ADAPTER COMP, GAUGE
for Dual Engine

36661-96L30-000
for Dual Engine

11 ADAPTER,
GAUGE FOR MULTI



36665-87L10-000
In addition to component of
[MECHANICAL SINGLE]



SUZUKI MULTI - FUNCTION DISPLAY (SMD)



PRODUCT LINE-UP



ULTIMATE CONNECTIVITY

Never compromise on quality and customer satisfaction - We endeavor every day to bring you reliable, high quality products with latest technology to accompany you on every voyage. You can find your most pleasurable boating experience with our SUZUKI MULTI-FUNCTION DISPLAY (SMD). SMD is designed to allow you to access to all your Suzuki engine information and other utility functions with a single touch!



KEY FEATURES

- ✓ Intuitive, easy, smooth operation with an entire multi touch screen interface. Total control at your fingertips
- ✓ Bonded all-glass LCD, sunlight viewable screen with impressive brightness, and a luxurious look
- ✓ All latest and unique technologies such as TruEcho Chirp™, Accu-Fish™, RezBoost™ combined in one display provide you the most exciting fishing experience*

* Requires FURUNO transducer to utilize the built-in fish finder. Please contact your nearest FURUNO dealers for further information.



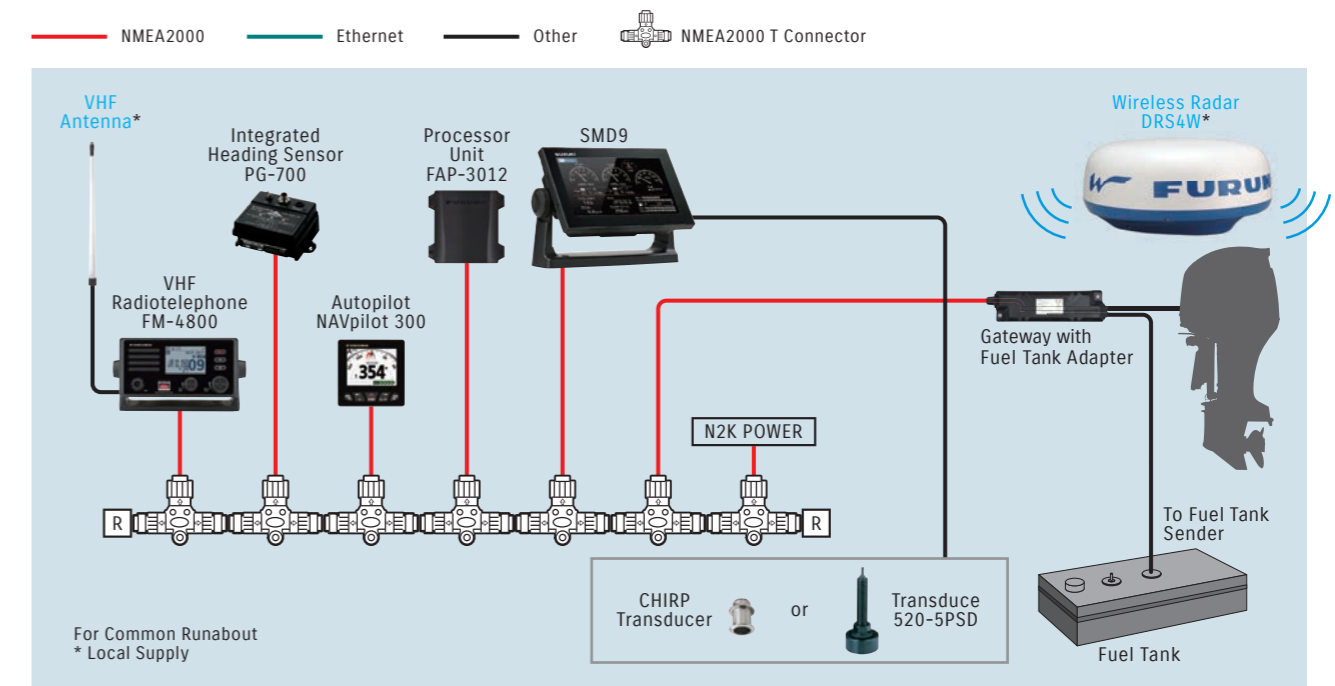


SMD9 & SMD7

SMD NETWORK RECOMMENDATIONS

THE ULTIMATE OUTBOARD MOTOR

Product suggestion only - Not an installation diagram. These suggestions apply to S.P.C users.



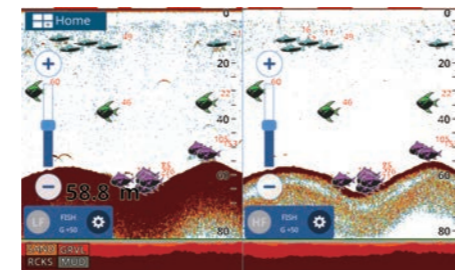
Design Your Own Screen



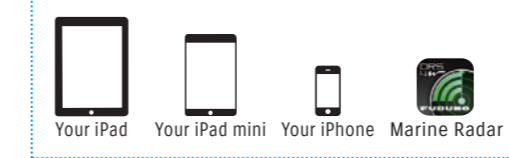
Suzuki Engine Interface



Detailed Chart With C-MAP 4D Compatibility



Advanced Reliable Fishing Partner-FISH FINDER*



* Two iOS units can access at the same time when connected to the DRS4W.



WIRELESS SOLUTION - MIRROR CONTROL APP

Combination with iOS/Android device increases the controllable station via Wireless LAN



Wireless Solution : Mirror Control App
Seller : AvMap srl

For iOS (App Store)

For Android (Google Play)

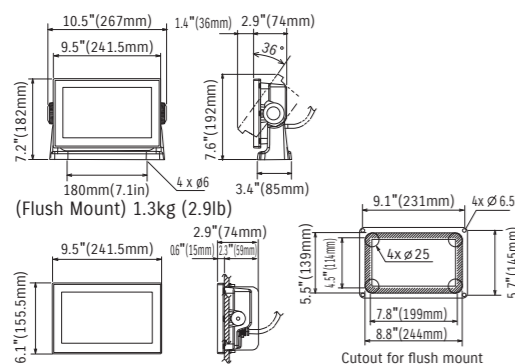


* Requires FURUNO transducer to utilize this feature. Please contact to local FURUNO Dealers for more details.

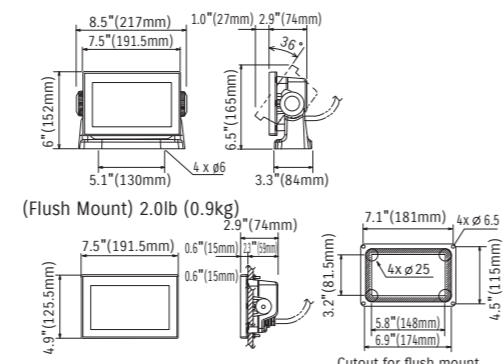
SMD9 AND SMD7 SPECIFICATIONS

MULTI-FUNCTION DISPLAY		SMD9	SMD7
DISPLAY UNIT			
Type	Color TFT Multi Touch LCD		
Screen Size	9" (228.6mm) Wide		7" (177.8mm) Wide
Screen Resolution	WVGA 800 x 480 pixels		
Screen Brightness	1000 cd/m ² (typical)		
Language	English (US & UK), Russian, Bulgarian, French, Spanish, German, Italian, Portuguese, Danish, Swedish, Norwegian, Finnish, Greek, Japanese		
Display Modes	Chart Plotter, Fish Finder, Radar* ¹ , AIS* ² , Instruments* ³ (Nav Data, Engine, Wind, Fuel tank, Autopilot* ⁴ , etc.), GPS status, Weather Forecast * ¹ : Connection to the 1st Watch Wireless Radar DRS4W required * ² : Connection to AIS sensor required * ³ : Connection to external sensors required * ⁴ : Connection to the FURUNO NAVPilot-300 required		
Memory Capacity	30,000 points for ship's track and waypoints 1,000 planned routes (Max. 50 points per route) 5,000 quickpoints		
GPS/WAAS			
Receiver Type	GPS	72 channels	
	SBAS	1 channel (C/A mode, WAAS)	
Receiving Frequency	L1 (1575.42 MHz)		
Time to First FIX	100 s (cold start)		
Tracking Velocity	999 kn		
SBAS	WAAS, EGNOS, MSAS		
ACCURACY			
Internal Antenna	GPS	10 m Max	
	WAAS	5 m Max	
	MSAS	7.5 m Max	
CHART PLOTTER			
Cartography	C-MAP 4D		
Alarms	Anchor, Depth, Arrival, Speed, Trip, Temperature, etc		
RADAR			
Display Modes	Head-up, North-up* *Heading input required.		
FISH FINDER (Built-in)			
Transmit Frequency	CW: 50/200 kHz, CHIRP: 40 to 225 kHz		
Transducer	300 W or 600 W or 1 kW* (Transducer dependent)*Matching Box MB-1100 required for some specific FURUNO transducers		
Modes	TrueEcho CHIRP™, RezBoost™, ACCU-FISH™, Bottom Discrimination**, Auto gain (Fishing/Cruising), Manual gain, A-Scope, Marker Zoom, Bottom Zoom, Bottom Lock* CHIRP dedicated transducer required. ** Dual frequency compatible transducer required.		
INTERFACE			
NMEA2000	1 Port		
Interface NMEA2000	Input	126992, 127245/250/251/258/489/493/497/505, 128259/267/275, 129025/026/029/038/039/040/041/285/538/540, 129793/794/798/808/809/810, 130306/310/311/312/313/314/316, 130577/830/831/832/880	
	Output	126992, 127245/250/251/257/258/505, 128259/267/275, 129025/026/029/033/283/284/285, 130310/312/316/830/831/832	
NMEA0183	1 Port		
Interface (NMEA0183)	Output	AAM, APB, BOD, BWR, DBT, DPT, GGA, GLL, GNS, GSA, GSV, GTD, HDG, HDT, MTW, MWV, RMA, RMB, RMC, RTE, THS, TLL, VHW, VTG, WPL, XTE, ZDA, PFEC (SDmrk/SDtb/SDtft/pidat)	
SD Card Slot	2 Slots, up to 32 GB (SD, SDHC Supported)		
Wireless LAN	IEEE 802.11 b/g/n		
ENVIRONMENT			
Temperature (IEC60945)	-15°C to +55°C		
Waterproofing	IP56		
POWER			
	12-24 VDC		
	1.0-0.5 A		

SMD9 Display Unit
(Bracket Mount) 3.3lb (1.5kg)



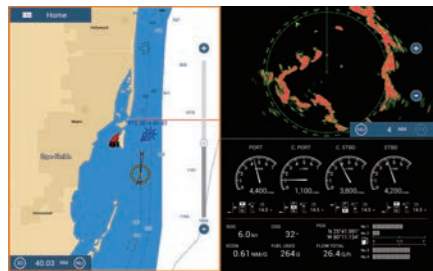
SMD7 Display Unit
(Bracket Mount) 2.4lb (1.1kg)





SMD16 & SMD12

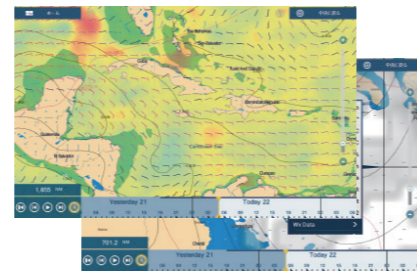
Design Your Own Screen



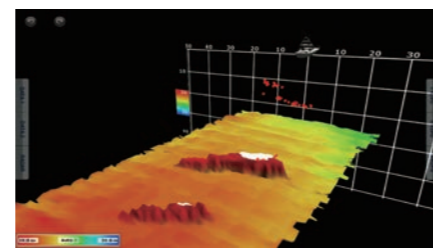
Suzuki Engine Interface



Marine Weather Forecast



Integrated FISH-FINDER*



Multi Beam Sonar*

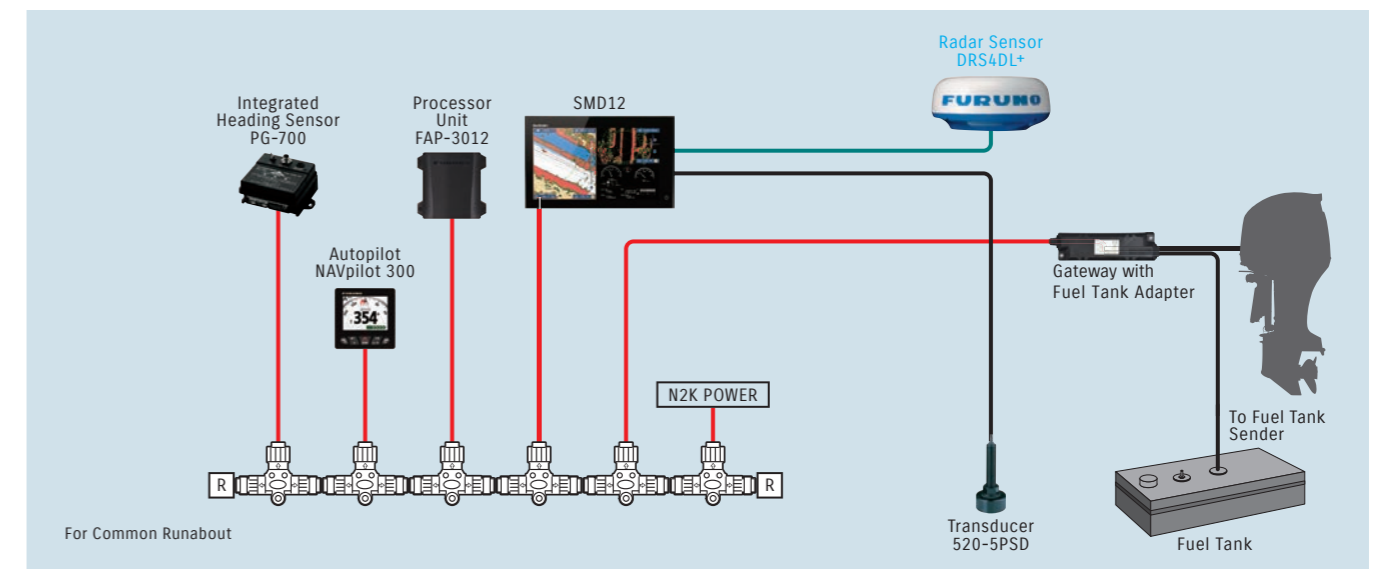
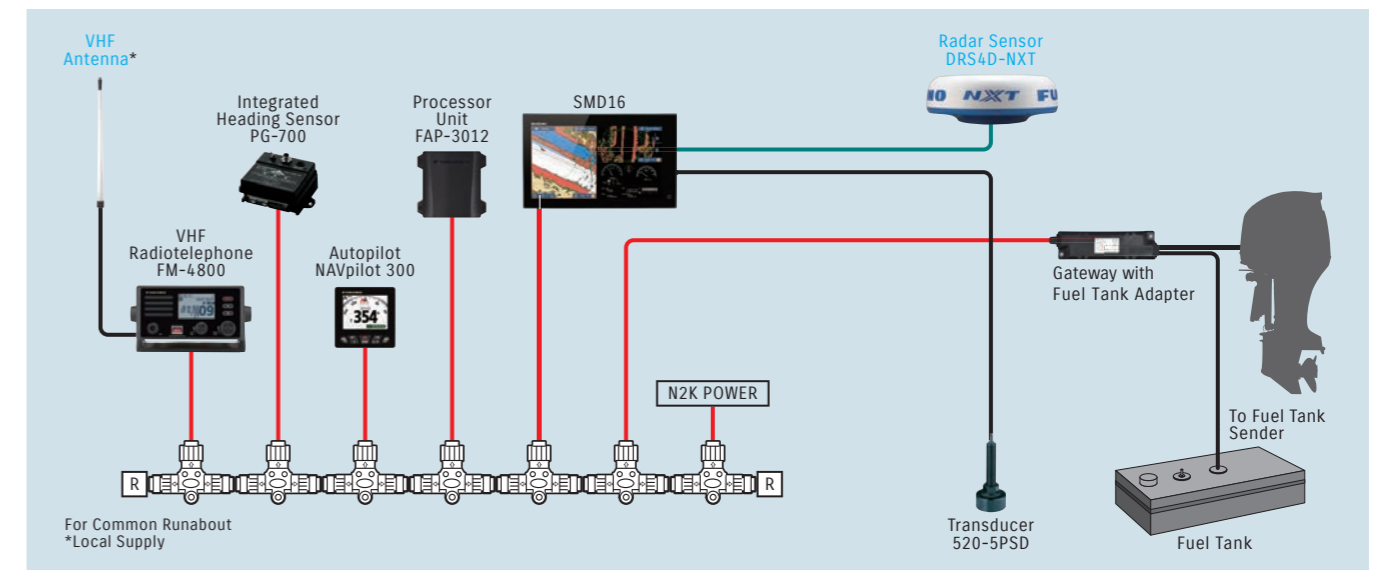
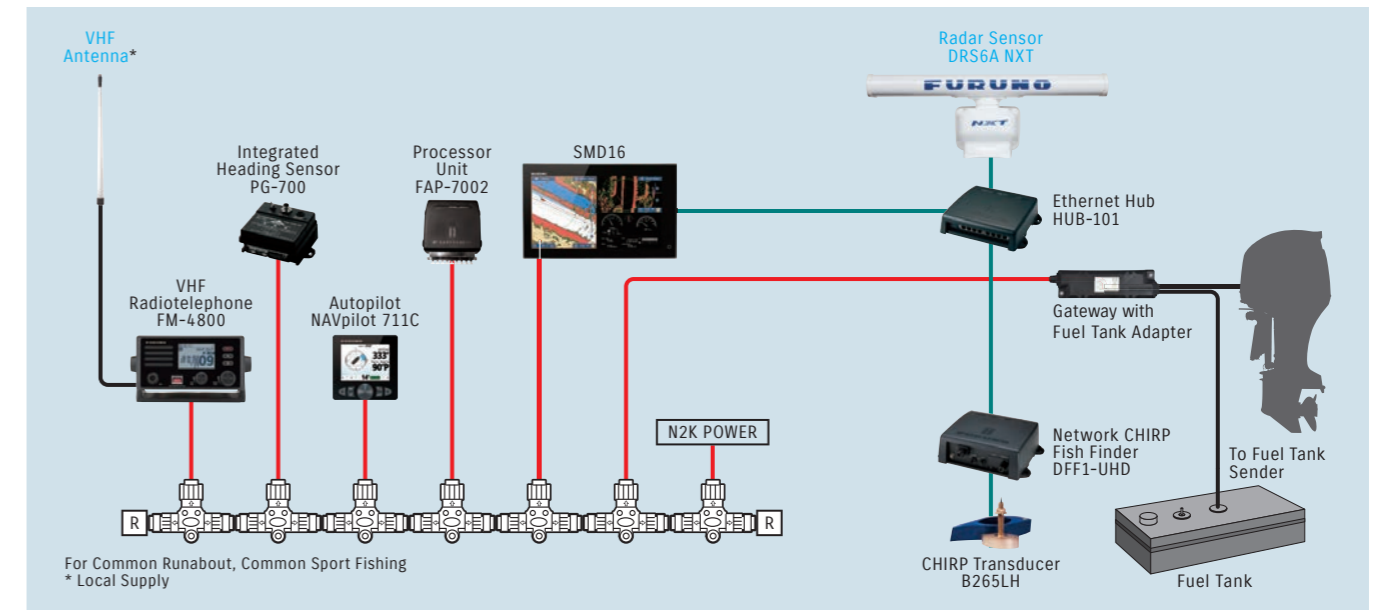
* Requires FURUNO transducer to utilize this feature. Please contact to local FURUNO Dealers for more details.

SMD NETWORK RECOMMENDATIONS

THE ULTIMATE
OUTBOARD MOTOR

Product suggestion only - Not an installation diagram. These suggestions apply to S.P.C users.

— NMEA2000 — Ethernet — Other — NMEA2000 T Connector

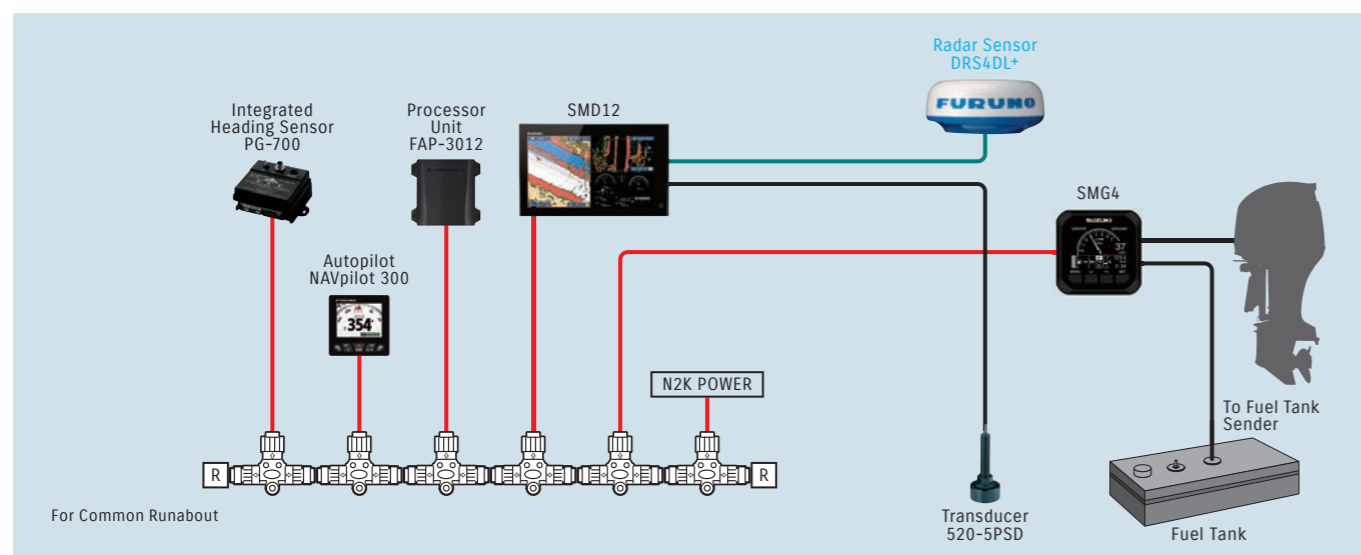
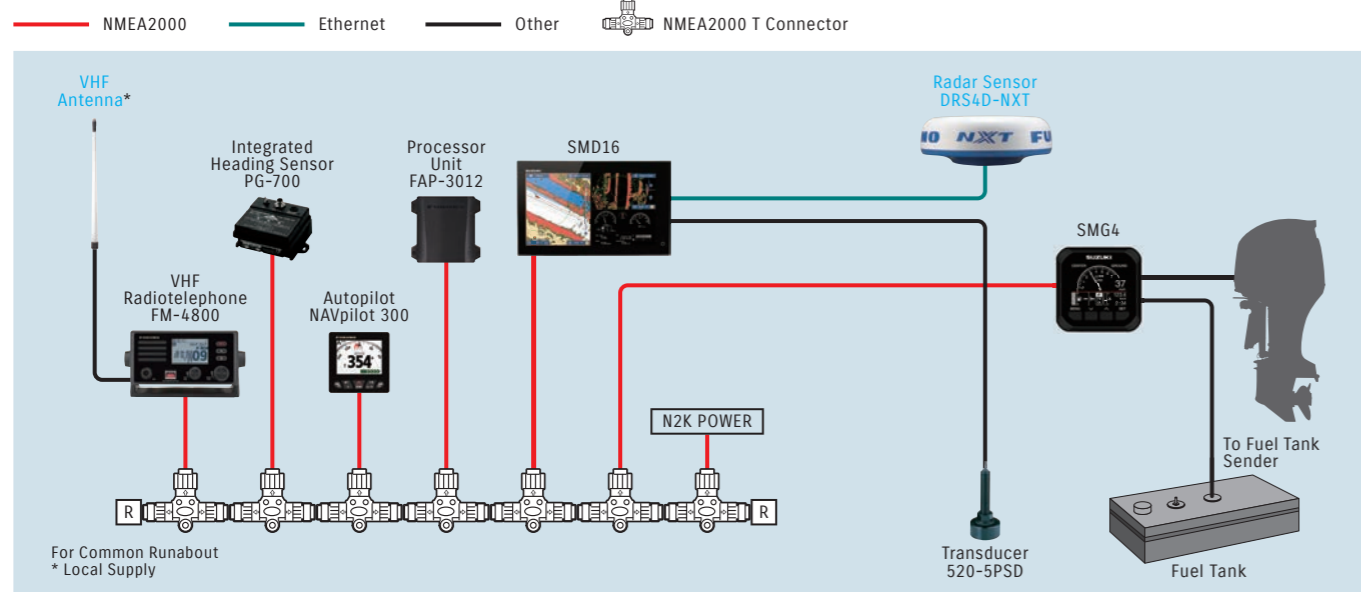


OPERATION SYSTEMS

SUZUKI MULTI - FUNCTION DISPLAY (SMD)

SMD NETWORK RECOMMENDATIONS In case of installing SMG4

Product suggestion only - Not an installation diagram. These suggestions apply to S.P.C users.



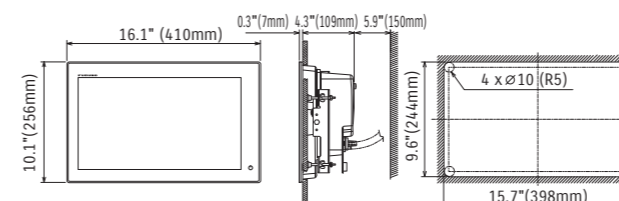
SMD16 AND SMD12 SPECIFICATIONS

MULTI-FUNCTION DISPLAY		SMD16	SMD12
DISPLAY UNIT			
Type	Color TFT Multi Touch LCD		
Screen Size	15.6" (396.2mm) Wide	12.1" (307.3mm) Wide	
Screen Resolution	FWXGA 1366 x 768 pixels	WXGA 1280 x 800 pixels	
Screen Brightness	1000 cd/m ² (typical)	1300 cd/m ² (typical)	
Language	Chinese (simplified Chinese Characters), Danish, English (US & UK), Finnish, French, German, Greek, Italian, Japanese, Norwegian, Portuguese, Russian, Spanish, Swedish		
Display Modes	GPS/WAAS/RADAR: Course plot, NAV data, Radar Chart Overlay, Head-up, North-up (heading data required), Fish Finder: ACCU-FISH™, A-scope, Auto (Fishing/ Cruising), Bottom Discrimination, Others: Weather Forecast, Digital switching, Marine Audio		
Memory Capacity	30,000 user points, 30,000 points for ship's tracks, 200 planned routes (500 points per route)		
GPS/WAAS			
Receiver Type	GPS	56 channels	
	SBAS	1 channel (C/A mode, WAAS)	
Receiving Frequency	L1 (1575.42 MHz)		
Time to First FIX	100 s (cold start)		
Tracking Velocity	999 kn		
SBAS	WAAS, EGNOS, MSAS		
ACCURACY			
Internal Antenna	GPS	10 m Max	
	WAAS	3 m Max	
	MSAS	7 m Max	
CHART PLOTTER			
Cartography	MapMedia mm3d chart (C-MAP/Navionics/NOAA)		
Alarms	Anchor Watch, XTE, Proximity, Depth, Temperature, Speed, etc.		
RADAR			
Display Modes	Head-up, North-up* *Heading input required.		
Target Tracking**	30 Targets* *Heading input required.		
FISH FINDER (Built-in)			
Transmit Frequency	50/200 kHz		
Transducer	600 W or 1 kW* *Matching Box MB-1100 required for some specific FURUNO transducers		
Modes	RezBoost™, ACCU-FISH™, Bottom Discrimination, A-Scope, Auto (Fishing/Cruising), Manual, Bottom Zoom, Bottom Lock		
INTERFACE			
NMEA2000	1 Port		
Interface NMEA2000	Input	059392, 059904, 061184, 060928, 065280, 126208, 126720, 126992/996, 127237/245/250/251/257/258/488/489/505, 128259/267, 129025/026/029/033/038/039/040/041/291/538/540, 129793/794/798/808/809/810, 130306/310/311/312/313/314/316/577/578/817/818/820/822/823/826/827/828/880	
	Output	126992/127250/127251/127257/127258/128259/128267/128275/129025/129026/129029/129033/129283/129284/129285/130306/130310/130312/130313/130314/130316	
NMEA0183	1 Integrated Output Port		
Interface (NMEA0183)	Output	AAM, APB, BOD, DBT, DPT, GGA, GLL, GNS, GSA, GSV, RMB, RMC, RTE, TLL, TTM, VTG, WPL, XTE, ZDA	
LAN	1 Port (100BASE-TX)		
USB	1 Port (USB2.0)		
Video Output	1 Port (HDMI)		
Video Input	2 Ports (NTSC/PAL)		
AUX I/O	1 Port (External Event/MOB Input/Operator Fitness/Alarm Output)		
SD Card Slot	1 Slot (Micro SDXC, rear), 2 Slots Card Unit (optional)		
Wireless LAN	IEEE802.11b/g/n, Transmit frequency: 2.4 GHz band		
ENVIRONMENT			
Temperature (IEC60945)	-15°C to +55°C		
Waterproofing	IP56		
POWER			
	12-24 VDC		
	3.6-1.8 A		3.0-1.5 A

** Not available with DRS4DL

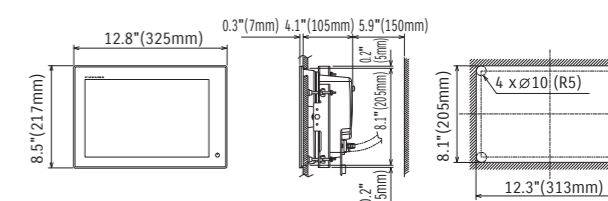
SMD16 Display Unit

10.6lb (4.9kg)




SMD12 Display Unit

8.2lb (3.7kg)




COMPONENT PARTS


1 DISPLAY ASSY, MULTI 7/9




DISPLAY ASSY, MULTI 12/16




2 ADAPTER, GAUGE FOR MULTI




4 WIRE COMP, EXTENSION




5 HARNESS ASSY, NETWORK POWER




6 CONNECTOR COMP, BRANCH




7 UNIT COMP, RESISTOR FEMALE




8 UNIT COMP, RESISTOR MALE




9 WIRE COMP, EXTENSION




10 WIRE, GAUGE EXT (OPTION)




11 ADAPTER COMP, GAUGE For MECHANICAL CONTROL



For SPC



16 UNIT COMP, GATEWAY*



***Important**
 34923-96L11-000: For SPC
 Also functions as fuel tank adapter (up to 4 tanks).
 34923-96L02-000: For Mechanical Control
 If fuel tank adapter is needed, use together with -96L11.

Component Parts	KIT COMPONENT QUANTITY		PART NUMBER(*)
	SET, MULTI DISPLAY 7	SET, MULTI DISPLAY 9	
SET, MULTI DISPLAY 7	-	-	A: 34901-98LB0-000 B: 34901-98L42-000
SET, MULTI DISPLAY 9	-	-	A: 34901-98LC0-000 B: 34901-98L60-000
1 DISPLAY ASSY, MULTI 7	1	-	34902-98LB0-000
DISPLAY ASSY, MULTI 9	-	1	34902-98L80-000
DISPLAY ASSY, MULTI 12	-	-	TBA
DISPLAY ASSY, MULTI 16	-	-	TBA
2 ADAPTER, GAUGE FOR MULTI	-	-	36665-87L10-000 (For MECHANICAL CONTROL & DUAL ENGINE)
4 WIRE COMP, EXTENSION 0.6m	1	1	990C0-88104-000
HARNESS ASSY, NETWORK POWER	1	1	36663-88L20-000*
5 HARNESS ASSY, NETWORK POWER WITH CONNECTOR BRANCH	-	-	990C0-88112-000
6 CONNECTOR COMP, BRANCH	3	3	990C0-88110-000
7 UNIT COMP, RESISTOR FEMALE	1	1	990C0-88113-000
8 UNIT COMP, RESISTOR MALE	1	1	990C0-88114-000
9 WIRE COMP, EXTENSION 4.7m	-	-	990C0-88107-000
WIRE COMP, EXTENSION 7.6m	-	-	990C0-88108-000
10 WIRE, GAUGE EXT (OPTION)	-	-	36667-96L60-000
11 ADAPTER COMP, GAUGE	-	-	A: 36661-96L20-000 B: 36661-96L30-000
12 WIRE COMP, GAUGE ADAPTER	-	-	36667-96L00-000
16 UNIT COMP, GATEWAY	1	1	A: 34923-96L11-000 (with 4 tank adapter) B: 34923-96L02-000

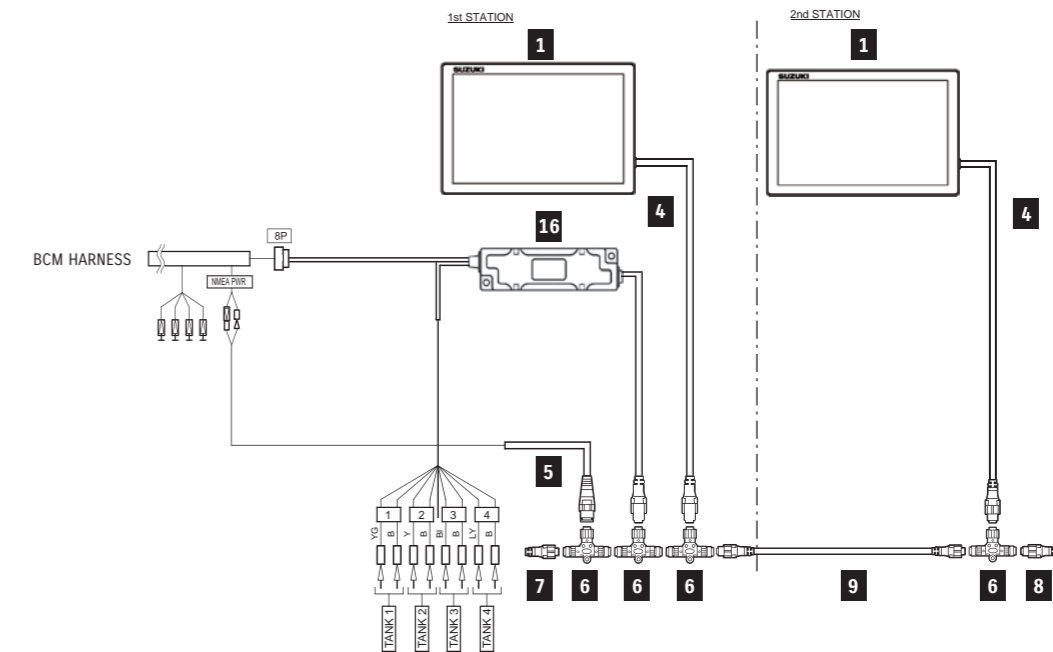
NOTE: A= for S.P.C B= for Mechanical control

* Kit component item. For spare parts supply, please order 990C0-88112-000

INSTALLATION DIAGRAM

SUZUKI PRECISION CONTROL (S.P.C) & SINGLE ENGINE

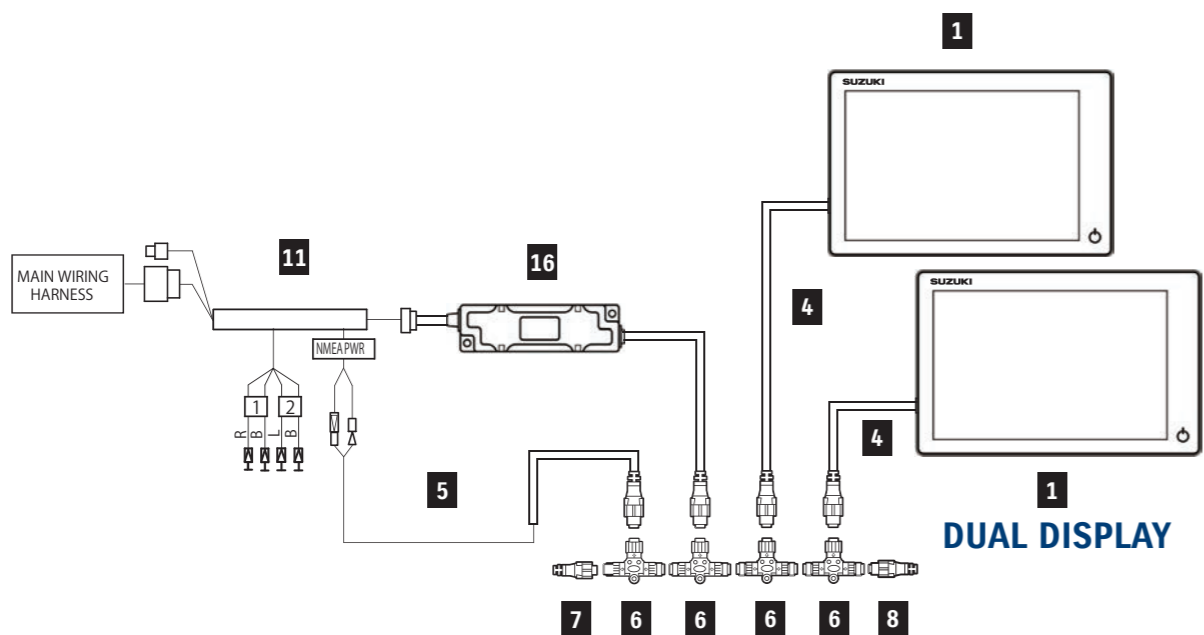
SINGLE STATION / DUAL STATION



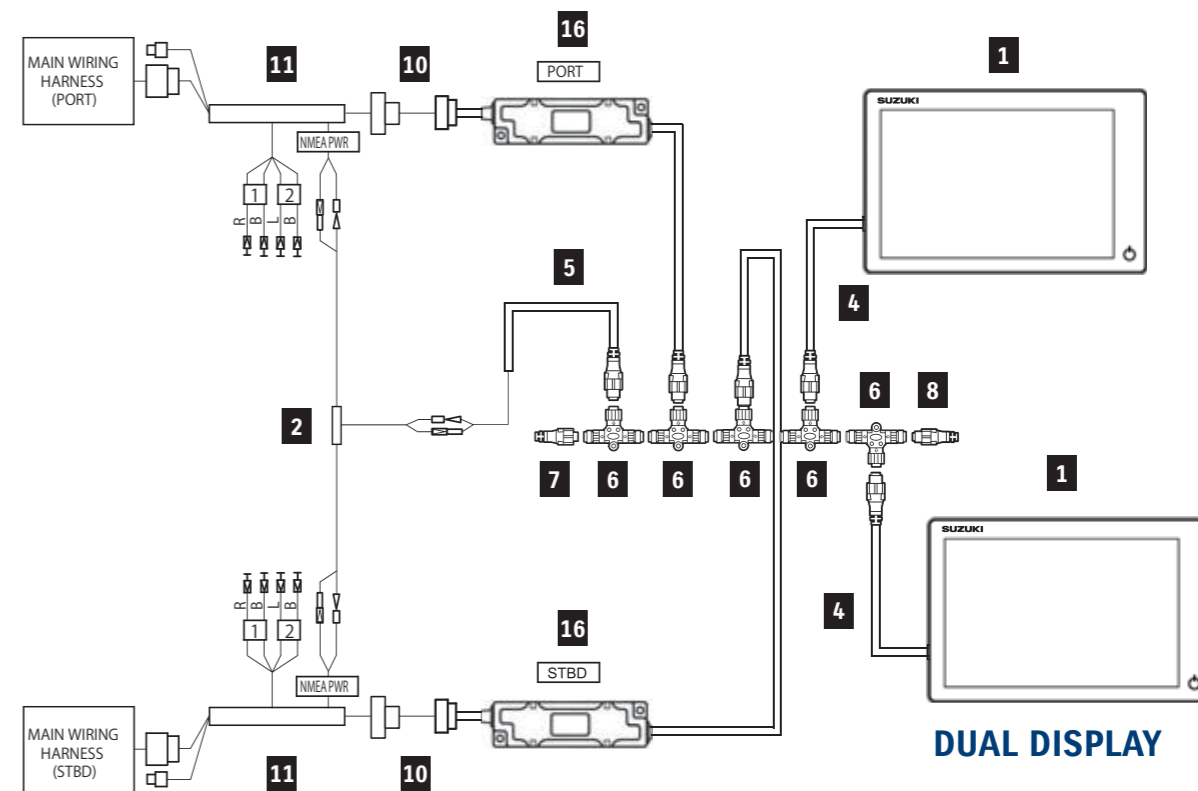
S.P.C & SINGLE ENGINE

PART NAME	Total Required Quantity					
	12/16 Display	12/16 Display Dual Display	12/16 Display Dual Station	7/9 Display	7/9 Display Dual Display	7/9 Display Dual Station*
SET, MULTI DISPLAY 7/9	-	-	-	1	1	1
1 DISPLAY ASSY, MULTI 7/9	-	-	-	-	1	1
DISPLAY ASSY, MULTI 12/16	1	2	2	-	-	-
4 WIRE COMP, EXTENSION	-	-	-	-	1	1
5 HARNESS ASSY, NETWORK POWER WITH CONNECTOR BRANCH	1	1	1	-	-	-
6 CONNECTOR COMP, BRANCH	2	3	3	1	1	1
7 UNIT COMP, RESISTOR FEMALE	1	1	-	-	-	-
8 UNIT COMP, RESISTOR MALE	1	1	-	-	-	-
9 WIRE COMP, EXTENSION	-	-	1	-	-	1
16 UNIT COMP, GATEWAY	1	1	1	-	-	-

MECHANICAL CONTROL & SINGLE ENGINE



MECHANICAL CONTROL & DUAL ENGINE



MECHANICAL CONTROL & SINGLE ENGINE

PART NAME	Total Required Quantity			
	12/16 Display	12/16 Display Dual Display	7/9 Display	7/9 Display Dual Display
SET, MULTI DISPLAY 7/9	-	-	1	1
1 DISPLAY ASSY, MULTI 7/9	-	-	-	1
DISPLAY ASSY, MULTI 12/16	1	2	-	-
4 WIRE COMP, EXTENSION	-	-	-	1
5 HARNESS ASSY, NETWORK POWER WITH CONNECTOR BRANCH	1	1	-	-
6 CONNECTOR COMP, BRANCH	2	3	-	1
7 UNIT COMP, RESISTOR FEMALE	1	1	-	-
8 UNIT COMP, RESISTOR MALE	1	1	-	-
11 ADAPTER COMP, GAUGE	1	1	1	1
16 UNIT COMP, GATEWAY	1	1	-	1

MECHANICAL CONTROL & DUAL ENGINE

PART NAME	Total Required Quantity			
	12/16 Display	12/16 Display Dual Display	7/9 Display	7/9 Display Dual Display
SET, MULTI DISPLAY 7/9	-	-	1	1
1 DISPLAY ASSY, MULTI 7/9	-	-	-	1
DISPLAY ASSY, MULTI 12/16	1	2	-	-
2 ADAPTER, GAUGE FOR MULTI	1	1	1	1
4 WIRE COMP, EXTENSION	-	-	-	1
5 HARNESS ASSY, NETWORK POWER WITH CONNECTOR BRANCH	1	1	-	-
6 CONNECTOR COMP, BRANCH	3	4	1	2
7 UNIT COMP, RESISTOR FEMALE	1	1	-	-
8 UNIT COMP, RESISTOR MALE	1	1	-	-
10 WIRE, GAUGE EXT (OPTION)	2	2	2	2
11 ADAPTER COMP, GAUGE	2	2	2	2
16 UNIT COMP, GATEWAY	2	2	-	1



SUZUKI DIAGNOSTIC SYSTEM MOBILE

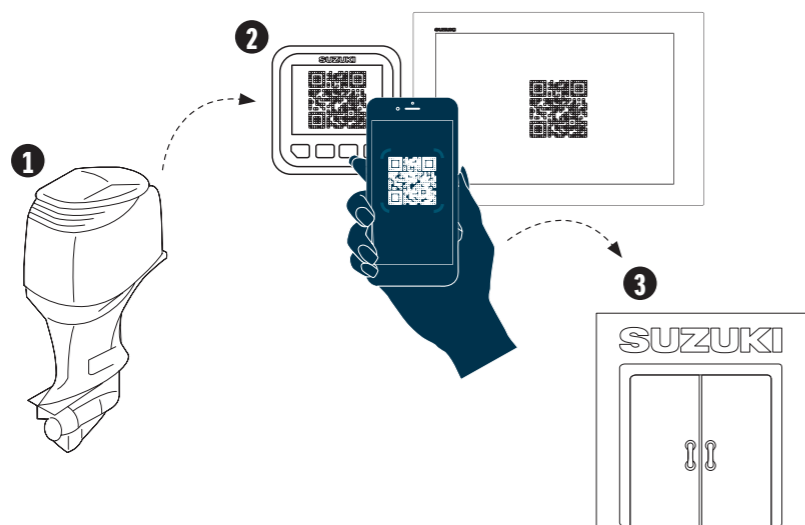
SDS Mobile works in tandem with our Multi-Function Gauge and Multi-Function Display. Simply download the App, available on iOS and Android, to your smartphone: you don't need a separate device. When you email your data scanned from QR code to the Dealer, they will be supplied of information including engine number, number of hours since the last oil change, total hours of operation at different rpm, and other technical information.

*DENSO WEB owns the right of name and logo of QR code.



HOW IT WORKS

1. The Outboard converts engine data into a QR code displayed on the Multi-Function Gauge or Multi-Function Display.
2. Customer can use their smart phone to scan the QR code with the SDS Mobile App. The engine data will be stored on their smart phone.
3. Customer can then send the engine data via email to your Suzuki Dealer.



DOWNLOAD THE APP FROM:



Apple and the Apple logo are trademarks of Apple Inc., registered in the U.S. and other countries. App Store is a service mark of Apple Inc., registered in the U.S. and other countries.



Google Play and the Google Play logo are trademarks of Google LLC.

SDS Mobile App and email service are entirely free of charge.



Find out more at our Global Homepage





ANALOGUE INSTRUMENT

TACHOMETER



White



Black



White



Black



White



Black

34200-93J14-000 (White)

34200-93J02-000 (Black)

Gauge Size 4" (101.6mm)

Applicable Model DF25A-250

Caution system alert with a monitor lamp lighting on when an abnormal engine condition occurs. Refer to SERVICE MANUAL for the detail.

34200-93J53-000 (White)

34200-93J42-000 (Black)

Gauge Size 4" (101.6mm)

Applicable Model DF40A-200A

Exclusive for SUZUKI Troll Mode System. Automatically switches to low RPM scale when the SUZUKI Troll Mode System is activated.

34200-93J34-000 (White)

34200-93J22-000 (Black)

Gauge Size 4" (101.6mm)

Applicable Model DF8A-30A

Full-scale 7000-RPM TACHOMETER can be used on electric-start models by using 4, 6 or 12 pole switch on rear of meter.

TRIM GAUGE



White



Black

34800-93J13-000 (White)

34800-93J02-000 (Black)

Gauge Size 2" (50.8mm)

Applicable Model DF25A-250

Magnetic-type gauge shows trim angle for optimum performance and efficiency.

FUEL GAUGE



White



Black

34300-93J13-000 (White)

34300-93J02-000 (Black)

Gauge Size 2" (50.8mm)

FUEL GAUGE alone works with the US Standard 250Ω sending unit.

HOUR METER



White



Black

34500-93J13-000 (White)

34500-93J02-000 (Black)

Gauge Size 2" (50.8mm)

Applicable Model DF9.9B-250

12-Volt-electric-motor driven meter indicates hours that your SUZUKI OUTBOARD MOTOR has been operated in order for you to know when each periodic service is required.

SPEEDOMETER



White



Black

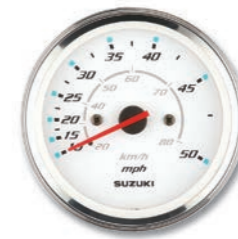
34100-93J13-000 (White)

34100-93J02-000 (Black)

Gauge Size 4" (101.6mm)

Maximum Speed 130km/h, 80mph

Bourdon-tube type speedometer with readings in km/h and mph. Includes vinyl tube, hardware and installation manual.



White



Black

34100-93J33-000 (White)

34100-93J22-000 (Black)

Gauge Size 4" (101.6mm)

Maximum Speed 80km/h, 50mph

Bourdon-tube type speedometer with readings in km/h and mph. Includes vinyl tube, hardware and installation manual.



White



Black

34100-93J53-000 (White)

34100-93J42-000 (Black)

Gauge Size 4" (101.6mm)

Maximum Speed 80km/h, 45knots

Bourdon-tube type speedometer with readings in km/h and knots. Includes vinyl tube, hardware and installation manual.



34100-93J62-000

Gauge Size 4" (101.6mm)

Background White

Maximum Speed 120km/h, 65knots

Bourdon-tube type speedometer with readings in km/h and knots. Includes vinyl tube, hardware and installation manual.

SPEEDOMETER SENDER ASSY



34190-95500-000

VOLTMETER



White



Black

34600-93J13-000 (White)

34600-93J02-000 (Black)

Gauge Size 2" (50.8mm)

Applicable Model DF9.9B-250

To help your SUZUKI OUTBOARD MOTOR run at its best, monitor the charging system functioning with a VOLTMETER.

WATER-PRESSURE GAUGE



White



Black

34650-93J33-000 (White)

34650-93J22-000 (Black)

Gauge Size 2" (50.8mm)

Applicable Model DF40A-250

Bourdon-tube type gauge measures cooling-water pressure. Select an appropriate INSTALLATION KIT for each model.

INSTALLATION KIT for WATER-PRESSURE GAUGE



34660-90J04-000

Applicable Model DF40A-140A

34660-96J01-000

Applicable Model DF150-175/200A

34660-93J02-000

Applicable Model DF200-250

KIT includes fittings and hoses needed for motor to gauge connection.



STEERING

TILLER HANDLE KIT



63002-88L29-YAY

Applicable Model
DF40A/50A

63002-88L17-YAY

Applicable Model
DF60A/50AV/60AV

63002-87L17-YAY

Applicable Model
DF70A-90A/100B

63002-90J38-YAY

Applicable Model
DF100A/115BT

Main features



Tachometer with warning indicators



Three-position angle adjustable bracket indicator



Troll mode switch

Activates SUZUKI Troll Mode System and controls RPM from idling engine speed up to 1200rpm at every 50rpm.



Power trim & tilt switch and throttle grip friction adjuster



DUAL-ENGINE TIE-BAR



67600-90J00-000

Stainless steel
Applicable Model DF100A-140A

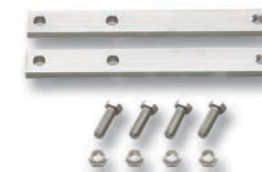
67600-99L00-000

Stainless steel
Applicable Model DF115BG/140BG

67600-93J00-000

Stainless steel
Applicable Model DF150A-200A/200-250
DF150AP-200AP

STEERING EXTENSION KIT



67630-93J00-000

for installation of DUAL-ENGINE TIE-BAR (67600-93J00-000)

Applicable Model DF150A-200A/200-250

DRAG-LINK KIT *67700- includes Steering Cable Seal



67700-87L10-000

Applicable Model DF70A-90A/100B
22MY and later

67700-93J00-000

Applicable Model DF40A-60A/200-250

67700-96J00-000

Applicable Model DF150A-200A/
150AP-200AP

67701-87J11-000

Applicable Model DF40A-60A/200-250

67701-87L10-000

Applicable Model DF70A-90A/100B
22MY and later

67701-90J01-000

Applicable Model DF100A-140A

67701-96J00-000

Applicable Model DF150A-200A/
150AP-200AP

67701-94L00-000

Applicable Model DF25A/30A

67701-99J02-000

Applicable Model DF8A-DF20A

STEERING-BRACKET ATTACHMENT



43755-87L00-000

Applicable Model DF70A-90A/100B

43755-88L00-000

Applicable Model DF40A-60A

43755-94L00-000

Applicable Model DF25A-30A

43755-99J00-000

Applicable Model DF8A-20A

STEERING CABLE SEAL



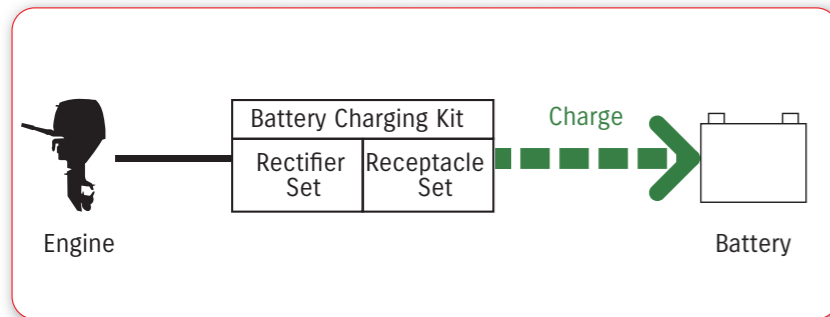
41161-94400-000

Applicable Model DF8A-250

ELECTRICAL PARTS

BATTERY CHARGING KIT

- Optional equipment for charging Battery
- Applicable models : DF4A/5A/6A, DF8A/9.9A, DF9.9B/15A/20A, DF25A/30A.

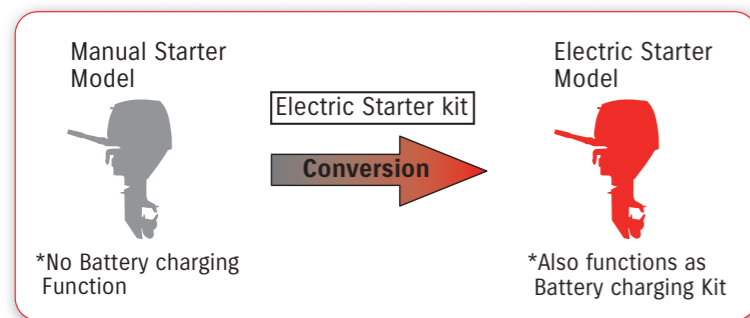



APPLICABLE MODEL	BATTERY CHARGING KIT RECTIFIER and REGULATOR SET RECEPTACLE KIT
DF4A/5A/6A	32000-97L03-000 32801-97L01-000 39600-97L02-000
DF8A/9.9A	32000-99J03-000 32801-95J03-000 39600-94J03-000
DF9.9B/15A/20A	32000-89L03-000 32801-89L01-000 39600-89L02-000
DF25A/30A	32000-94L02-000 32800-88L01-000 39600-94L00-000 32815-94L00-000 (BRACKET) 01550-06207-000 (BOLT)

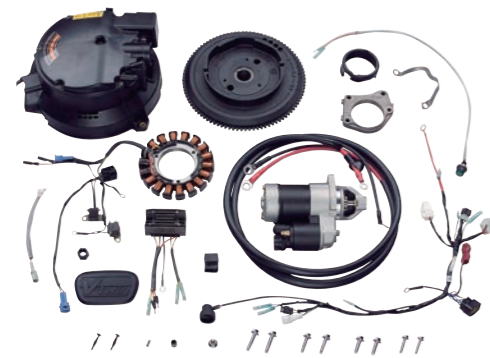


ELECTRIC STARTER KIT

- Optional materials for Converting Manual Starter model into Electric Starter model.
- * Electric Starter Kit functions as Battery charging Kit as well.



APPLICABLE MODEL	ELECTRIC STARTER KIT
DF4A/5A/6A	—
DF8A/9.9A	31000-99J11-000
DF25A/30A	31000-94L09-000
DF9.9B/15A/20A	31000-89L09-000 (For -17MY) 31000-89L21-000 (For 18MY-)
	DF9.9B: 33930-89L40-000 DF15A: 33930-89L00-000 DF20A: 33930-89L20-000 DF20A(P40): 33930-89L60-000



BATTERY ISOLATOR LEAD SET

Optional equipment for charging additional battery.

33830-98J11-000

Applicable Model DF150A-200A/
150AP-300AP/
325A/350A



FUEL SYSTEM

FUEL TANK

NOTE : These tanks do not meet US-EPA requirements.



65000-99100-000

12-liter plastic tank without fuel-level gauge

Applicable Model DF4A/5A/6A

65000-94L10-000

25-liter plastic tank with a fuel-level gauge

Applicable Model DF8A-140A

65000-89L10-000

12-liter plastic tank

Applicable Model DF4A-20A

REPLACEMENT FUEL CAP

NOTE : Not US-EPA compatible.

65520-99100-000

Applicable Model DF5A-20A/R

FUEL-HOSE SOCKET



65750-98506-000

Metal, Inner diameter: 11.2 mm

Applicable Model DF4A-20A/R



65750-87J11-000

Plastic, Inner diameter: 6.6 mm

Applicable Model DF4A/8A-30A



65750-95501-000

Metal, Inner diameter: 13.0 mm

Applicable Model DF8A/R-140A

FUEL CONNECTOR



65720-986B0-000

Engine side, Plastic

Applicable Model DF4A



65740-95D01-000

Tank side, Outer diameter: 13 mm, 1/4" NPT

Applicable Model DF8A/R-140A

SQUEEZE PUMP



65770-90J13-000

Large-in & Large-out

Applicable Model DF8A-20A/40A-140A

65770-93J13-000

Large-in & Large-out

Applicable Model DF150-350A

FUEL-HOSE

09352-73124-00D

I/D 7.3 , O/D 12.5

LENGTH 4,000mm

Not US-EPA compatible

FUEL-HOSE COMPONENT



65700-87J19-000

for 25-liter plastic tank to engine

Applicable Model DF8A-20A

65700-90J18-000

for 25-liter plastic tank to engine

Applicable Model DF40A-60A

65700-90J24-000

for 25-liter plastic tank to engine

Applicable Model DF70A-140A

65700-93J14-000

for fuel tank to engine

Applicable Model DF150-350A

FUEL-HOSE COMPONENT

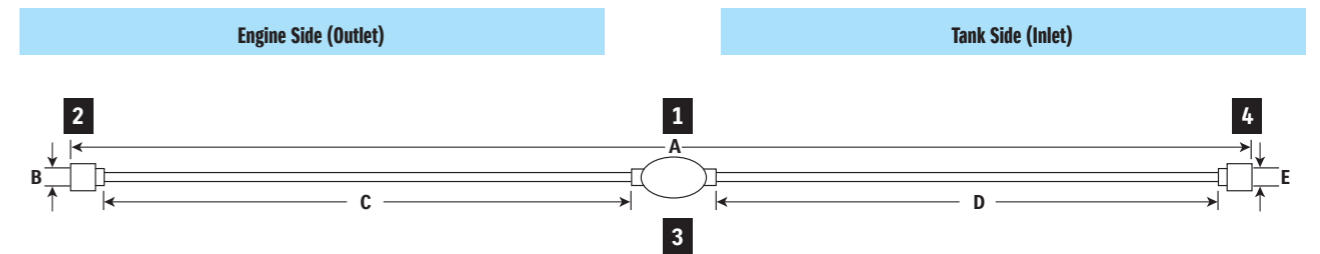
(US-EPA compatible.)

65700-87J28-000

Applicable Model DF5A-30A

65700-88L06-000

Applicable Model DF40A-60A



FUEL-HOSE COMPONENT Chart



1 FUEL HOSE COMPONENT	2 SOCKET		- HOSE				3 SQUEEZE PUMP	- HOSE			4 SOCKET					
	Part Number	A Length (mm)	Material	B I/D (mm)	Part Number	C Length (mm)		I/D (mm)	O/D (mm)	D Length (mm)	I/D (mm)	O/D (mm)	Material	E I/D (mm)	Part Number	
65700-87J19-000	1970	Plastic	6.6	65750-87J11-000	700	-	7.3	12.5	65770-90J13-000	1100	-	7.3	12.5	Metal	13.0	65750-95501-000
65700-90J18-000	1250	(no socket)	-	-	(no hose)	-	-	-	65770-90J13-000	1100	-	7.3	12.5	Metal	13.0	65750-95501-000
65700-90J24-000	1250	(no socket)	-	-	(no hose)	-	-	-	65770-90J13-000	1100	-	7.3	12.5	Metal	13.0	65750-95501-000
65700-93J14-000	2370	(no socket)	-	-	(no hose)	-	-	-	65770-93J13-000	2250	Large	9.0	14.0	(no socket)	-	-
65700-87J28-000	2000	Plastic	6.6	65750-87J11-000	700	-	7.3	12.5	65770-90J03-000	1100	-	7.3	12.5	Metal	13.0	65750-95501-000
65700-88L06-000	1280	(no socket)	-	-	(no hose)	-	-	-	65770-90J03-000	1100	-	7.3	12.5	Metal	13.0	65750-95501-000

WATER SEPARATOR / FUEL FILTER



65900-98J11-000

Applicable Model DF5A-DF140A

65900-98J21-000

Applicable Model DF150A-DF350A

WATER SEPARATOR/FUEL FILTER ELEMENT SET



65910-98J01-000

Applicable Model DF5A-DF350A



SUZUKI PROPELLERS WATERGRIP

*This picture was taken remotely

WATERGRIP



The WATERGRIP series will be the new standard for Suzuki propellers. The interchangeable square-shaped bush system is designed for quick and easy replacement when required, and also accurately and efficiently converts power from the engine to thrust through the propeller.



WATERGRIP DUAL



Our flagship models, the DF350A, DF325A and DF300B, introduced the Suzuki Dual Prop System, an industry-leading technology, which delivers outstanding and exciting performance. The two contra-rotating propellers, operating simultaneously, enables greater conversion efficiency as well as better stability, grip, and manoeuvrability.



WATERGRIP SPORT



The WATERGRIP SPORT propellers feature a high rake blade design for excellent acceleration and exceptional top speed. These propellers are ideal for lightweight sports boats as they give remarkably stable thrust when turning for superior manoeuvrability.



Model	Type	Material	Blade	Diameter		Pitch		Rotation*	Part number
				in	(mm)	in	(mm)		
DF150	Watergrip	Stainless	3	16	(406.4)	15	(381)	RR	58700-93L80-000
DF150AP	Watergrip	Stainless	3	16	(406.4)	17	(431.8)	RR	58700-93L00-000
DF175	Watergrip	Stainless	3	16	(406.4)	18 1/2	(469.9)	RR	58700-93L10-000
DF175AP	Watergrip	Stainless	3	16	(406.4)	20	(508)	RR	58700-93L20-000
DF200	Watergrip	Stainless	3	16	(406.4)	21 1/2	(546.1)	RR	58700-93L30-000
DF200A	Watergrip	Stainless	3	16	(406.4)	23	(584.2)	RR	58700-93L40-000
DF200AP	Watergrip	Stainless	3	16	(406.4)	24 1/2	(622.3)	RR	58700-93L50-000
DF225	Watergrip	Stainless	3	16	(406.4)	26	(660.4)	RR	58700-93L60-000
DF250	Watergrip	Stainless	3	16	(406.4)	27 1/2	(698.5)	RR	58700-93L70-000
DF250AP	Watergrip	Stainless	3	16	(406.4)	17	(431.8)	CR	58800-93L00-000
DF300AP	Watergrip	Stainless	3	16	(406.4)	18 1/2	(469.9)	CR	58800-93L10-000
	Watergrip	Stainless	3	16	(406.4)	20	(508)	CR	58800-93L20-000
	Watergrip	Stainless	3	16	(406.4)	21 1/2	(546.1)	CR	58800-93L30-000
	Watergrip	Stainless	3	16	(406.4)	23	(584.2)	CR	58800-93L40-000
	Watergrip	Stainless	3	16	(406.4)	24 1/2	(622.3)	CR	58800-93L50-000
	Watergrip	Stainless	3	16	(406.4)	26	(660.4)	CR	58800-93L60-000
	Watergrip	Stainless	3	15 1/2	(393.7)	17	(431.8)	RR	58700-96J00-000
	Watergrip	Stainless	3	15 1/4	(387.4)	19	(482.6)	RR	58700-96J10-000
	Watergrip	Stainless	3	15	(381)	21	(533.4)	RR	58700-96J20-000
	Watergrip	Stainless	3	14 3/4	(374.7)	23	(584.2)	RR	58700-96J30-000
	Watergrip	Stainless	3	14 1/2	(368.3)	25	(635)	RR	58700-96J40-000
	Watergrip	Stainless	3	14 1/2	(368.3)	27	(685.8)	RR	58700-96J50-000
	Watergrip	Stainless	3	15 1/2	(393.7)	17	(431.8)	CR	58800-96J00-000
	Watergrip	Stainless	3	15 1/4	(387.4)	19	(482.6)	CR	58800-96J10-000
	Watergrip	Stainless	3	15	(381)	21	(533.4)	CR	58800-96J20-000
	Watergrip	Stainless	3	14 3/4	(374.7)	23	(584.2)	CR	58800-96J30-000
	Watergrip	Stainless	3	14 1/2	(368.3)	25	(635)	CR	58800-96J40-000
	Watergrip	Stainless	3	14 1/2	(368.3)	27	(685.8)	CR	58800-96J50-000
	Watergrip	Stainless	4	15 1/4	(387.4)	18	(457.2)	RR	58700-93J00-000
	Watergrip	Stainless	4	15 1/4	(387.4)	20	(508)	RR	58700-93J10-000
	Watergrip	Stainless	4	15 1/4	(387.4)	22	(558.8)	RR	58700-93J20-000
	Watergrip	Stainless	4	15 1/4	(387.4)	24	(609.6)	RR	58700-93J30-000
	Watergrip	Stainless	4	15 1/4	(387.4)	26	(660.4)	RR	58700-93J40-000
	Watergrip	Stainless	4	15 1/4	(387.4)	20	(508)	CR	58800-93J10-000
	Watergrip	Stainless	4	15 1/4	(387.4)	22	(558.8)	CR	58800-93J20-000
	Watergrip	Stainless	4	15 1/4	(387.4)	24	(609.6)	CR	58800-93J30-000
	Watergrip	Stainless	4	15 1/4	(387.4)	26	(660.4)	CR	58800-93J40-000
	Watergrip Sport	Stainless	3	15	(381)	19	(482.6)	RR	58700-96L00-000
	Watergrip Sport	Stainless	3	14 7/8	(377.8)	21	(533.4)	RR	58700-96L10-000
	Watergrip Sport	Stainless	3	14 1/2	(368.3)	23	(584.2)	RR	58700-96L20-000
	Watergrip Sport	Stainless	3	14 1/4	(362)	25	(635)	RR	58700-96L30-000
	Watergrip Sport	Stainless	3	14	(355.6)	27	(685.8)	RR	58700-96L40-000

* Be sure to install both front and rear propellers in the same pitch.

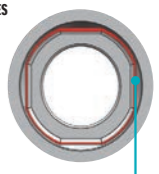
Model	Type	Material	Blade	Diameter		Pitch		Part number
				in	(mm)	in	(mm)	
DF300B	Watergrip Dual	Stainless	3	15 1/2	(393.7)	12	(304.8)	58500-98LA0-000 (Front)
DF325A								58600-98LA1-000 (Rear)
DF350A	Watergrip Dual	Stainless	3	15 1/2	(393.7)	15	(381)	58500-98LB0-000 (Front)
								58600-98LB1-000 (Rear)
								58500-98LC0-000 (Front)
								58600-98LC1-000 (Rear)
								58500-98L90-000 (Front)
								58600-98L91-000 (Rear)
								58500-98L60-000 (Front)
								58600-98L61-000 (Rear)
								58500-98L00-000 (Front)
								58600-98L01-000 (Rear)
								58500-98L10-000 (Front)
								58600-98L11-000 (Rear)
								58500-98L20-000 (Front)
								58600-98L21-000 (Rear)
								58500-98L30-000 (Front)
								58600-98L31-000 (Rear)
								58500-98L40-000 (Front)
								58600-98L41-000 (Rear)
	58500-98L50-000 (Front)							
	58600-98L51-000 (Rear)							
	58500-98L70-000 (Front)							
	58600-98L71-000 (Rear)							
	58500-98L80-000 (Front)							
	58600-98L81-000 (Rear)							

THE NEW WATERGRIP RANGE

WATERGRIP is a stainless-steel propeller series offering accurate response to User operation. Converting engine power into propulsion with high efficiency, this propeller series meets our customer's demand for bigger, faster, more powerful outboards.

The WATERGRIP propeller series employs a new interchangeable and square shaped propeller bush that minimises power loss in delivery.

PROPELLER BUSH ADVANTAGES



- Better resistance over propeller slip
- Interchangeable bush

PROPELLER LINE-UP

Model	Type	Material	Blade	Diameter		Pitch		Rotation*	Description	Part number
				in	(mm)	in	(mm)			
DF2.5	A520	Aluminum	3	7 3/8	(187.3)	5 3/8	(136.5)	RR		58110-97JA0-019
DF4A	C601	Aluminum	3	7 1/2	(190.5)	6	(152.4)	RR		58110-91JL0-019
DF5A	C611	Aluminum	3	7 1/2	(190.5)	6 1/2	(165.1)	RR		58110-91JM0-019
DF6A	C701	Aluminum	3	7 1/2	(190.5)	7	(177.8)	RR		58110-91JN0-019
DF8A	M701	Aluminum	3	9 1/4	(235)	7	(177.8)	RR		58100-89L00-019
DF9.9A	M821	Aluminum	3	9 1/4	(235)	8	(203.2)	RR	THICK	58100-90L41-019
	M901	Aluminum	3	9 1/4	(235)	9	(228.6)	RR		58100-89L20-019
	M911	Aluminum	3	9 1/4	(235)	9	(228.6)	RR	THICK	58100-90L50-019
	M1001	Aluminum	3	9 1/4	(235)	10	(254)	RR		58100-89L60-019
	M1011	Aluminum	3	9 1/4	(235)	10	(254)	RR	THICK	58100-90L21-019
	M1101	Aluminum	3	9 1/4	(235)	11	(279.4)	RR		58100-89L70-019
DF9.9B		Aluminum	4	10	(254)	5	(127)	RR	High thrust	58100-94JA2-019
DF15A		Aluminum	4	10	(254)	7	(177.8)	RR	High thrust	58100-94JB1-019
DF20A		Aluminum	3	9 1/4	(235)	7	(177.8)	RR		58100-89L00-019
		Aluminum	3	9 1/4	(235)	8	(203.2)	RR	THICK	58100-90L41-019
		Aluminum	3	9 1/4	(235)	9	(228.6)	RR		58100-89L20-019
		Aluminum	3	9 1/4	(235)	9	(228.6)	RR	THICK	58100-90L50-019
		Aluminum	3	9 1/4	(235)	10	(254)	RR		58100-89L60-019
		Aluminum	3	9 1/4	(235)	10	(254)	RR	THICK	58100-90L60-019
		Aluminum	3	9 1/4	(235)	11	(279.4)	RR		58100-89L70-019
		Aluminum	3	9 1/4	(235)	12	(304.8)	RR		58100-89L50-019
DF25A	P911	Aluminum	3	10 1/4	(260.3)	9	(228.6)	RR	THICK	58100-96372-019
DF30A	P1001	Aluminum	3	10 1/4	(260.3)	10	(254)	RR		58100-91L40-019
	P1011	Aluminum	3	10 1/4	(260.3)	10	(254)	RR	THICK	58100-96472-019
	P1101	Aluminum	3	10 1/4	(260.3)	11	(279.4)	RR		58100-91L50-019
	P1201	Aluminum	3	10 1/4	(260.3)	12	(304.8)	RR		58100-91L20-019
	P1211	Aluminum	3	10 1/4	(260.3)	12	(304.8)	RR	THICK	58100-96482-019
	P1301	Aluminum	3	10 1/4	(260.3)	13	(330.2)	RR		58100-91L30-019
	P1311	Aluminum	3	10 1/4	(260.3)	13	(330.2)	RR	THICK	58100-96492-019
	P1401	Aluminum	3	10 1/4	(260.3)	14	(355.6)	RR		58100-95D01-019
	P1501	Aluminum	3	10 1/4	(260.3)	15	(381)	RR		58100-96462-019
DF40A	S900	Aluminum	3	11 1/2	(292.1)	9	(228.6)	RR		58100-88LC0-019
DF50A	S1000	Aluminum	3	11 1/2	(292.1)	10	(254)	RR		58100-88LD0-019
DF60A	S1100	Aluminum	3	11 1/2	(292.1)	11	(279.4)	RR		58100-88LE0-019
	S1200	Aluminum	3	11 5/8	(295.3)	12	(304.8)	RR		58100-88LA0-019
	S1301	Aluminum	3	11 1/2	(292.1)	13	(330.2)	RR		58100-88LB0-019
	S1400	Aluminum	3	11 3/8	(288.9)	14	(355.6)	RR		58100-88L52-019
	S1500	Aluminum	3	11 1/4	(285.8)	15	(381)	RR		58100-88L62-019
	S1600	Aluminum	3	11 1/8	(282.6)	16	(406.4)	RR		58100-88L72-019
	S1700	Aluminum	3	11	(279.4)	17	(431.8)	RR		58100-88LF0-019
	SS1600	Stainless	3	11 1/8	(282.6)	16	(406.4)	RR		58200-88L30-000
DF50AV		Aluminum	3	14	(355.6)	9	(228.6)	RR		58100-87LG1-019
DF60AV		Aluminum	3	14	(355.6)	11	(279.4)	RR		58100-87LH0-019
		Aluminum	3	13 3/4	(349.3)	12	(304.8)	RR		58100-87LJ0-019
		Aluminum	3	14	(355.6)	13	(330.2)	RR		58100-87LA0-019
		Aluminum	3	13 7/8	(352.4)	15	(381)	RR		58100-87LB0-019
		Aluminum	3	13 3/4	(349.3)	17	(431.8)	RR		58100-87LC0-019
DF70A		Aluminum	3	14	(355.6)	13	(330.2)	RR		58100-87LA0-019
DF80A		Aluminum	3	13 7/8	(352.4)	15	(381)	RR		58100-87LB0-019
DF90A		Aluminum	3	13 3/4	(349.3)	17	(431.8)	RR		58100-87LC0-019
DF100B		Aluminum	3	13 3/4	(349.3)	19	(482.6)	RR		58100-87LD0-019
		Aluminum	3	13 3/4	(349.3)	21	(533.4)	RR		58100-87LE0-019
		Aluminum	3	13 3/4	(349.3)	23	(584.2)	RR		58100-87LF0-019
		Aluminum	3	13 1/2	(342.9)	15	(381)	RR		58100-90JE0-019
		Aluminum	3	14	(355.6)	17	(431.8)	RR		58100-90JA0-019
		Aluminum	3	14	(355.6)	19	(482.6)	RR		58100-90JB0-019
		Aluminum	3	14	(355.6)	21	(533.4)	RR		58100-90JC0-019
		Aluminum	3	14	(355.6)	23	(584.2)	RR		58100-90JD0-019
		Stainless	3	13 7/8	(352.4)	15	(381)	RR		58200-92J40-000
		Stainless	3	13 7/8	(352.4)	17	(431.8)	RR		58200-92J50-000
		Stainless	3	13 7/8	(352.4)	19	(482.6)	RR		58200-92J60-000
		Stainless	3	13 7/8	(352.4)	21	(533.4)	RR		58200-92J70-000
		Stainless	3	13 7/8	(352.4)	23	(584.2)	RR		58200-92J80-000
		Stainless	3	13 7/8	(352.4)	25	(635)	RR		58200-92J90-000

*RR:Regular-Rotation model, CR:Counter-Rotation model

Model	Type	Material	Blade	Diameter		Pitch		Rotation*	Description	Part number
				in	(mm)	in	(mm)			
DF100A		Aluminum	3	13 1/2	(342.9)	15	(381)	RR		58100-90JE0-019
DF115A		Aluminum	3	14	(355.6)	17	(431.8)	RR		58100-90JA0-019
DF115BG		Aluminum	3	14	(355.6)	19	(482.6)	RR		58100-90JB0-019
DF140A		Aluminum	3	14	(355.6)	21	(533.4)	RR		58100-90JC0-019
DF140BG		Aluminum	3	14	(355.6)	23	(584.2)	RR		58100-90JD0-019
		Stainless	3	13 7/8	(352.4)	15	(381)	RR		58200-92J40-000
		Stainless	3	13 7/8	(352.4)	17	(431.8)	RR		58200-92J50-000
		Stainless	3	13 7/8	(352.4)	19	(482.6)	RR		58200-92J60-000
		Stainless	3	13 7/8	(352.4)	21	(533.4)	RR		58200-92J70-000
		Stainless	3	13 7/8	(352.4)	23	(584.2)	RR		58200-92J80-000
		Stainless	3	13 7/8	(352.4)	25	(635)	RR		58200-92J90-000
		Stainless	3	13 7/8	(352.4)	17	(431.8)	CR		58200-92JA0-000
		Stainless	3	13 7/8	(352.4)	19	(482.6)	CR		58200-92JB0-000
		Stainless	3	13 7/8	(352.4)	21	(533.4)	CR		58200-92JC0-000
		Stainless	3	13 7/8	(352.4)	23	(584.2)	CR		58200-92JD0-000

HARDWARE FOR PROPELLER

Applicable Model	STOPPER	PROPELLER BUSH	HARDWARE KIT					
			SPACER	WASHER	STOPPER	NUT	COTTER PIN	
DF2.5	57635-91JL0-000	58120-97JA0-000	N/A	-	-	-	58130-91JL0-000	09204-03003-000
DF4A/5A/6A	57635-97L00-000	58120-91JL0-000	N/A	-	-	-	58130-91JL0-000	09204-03003-000
DF8A/9.9A	57632-94J00-000	58120-89L00-000	N/A	-	09160-12066-000	-	09141-12005-000	09204-02004-000
DF9.9B/15A/20A	57632-94J00-000	58120-89L00-000	N/A	-	09160-12066-000	-	09141-12005-000	09204-02004-000
DF25A/30A	57632-91L00-000	58120-96401-000	57630-96300-000	57633-96300-000	09160-14028-000	-	09141-14008-000	09204-03003-000
DF40A/50A/60A	57632-95320-000	58120-88L01-000	57630-94301-000	57633-94301-000	09160-18028-000	-	09141-18005-000	09204-03003-000
DF50AV/60AV	57635-90J01-000	58105-90J00-000	57630-90J00-000	57633-90J02-000	09160-18028-000	-	09141-18005-000	09204-03003-000
DF70A/80A/90A/100B	57632-87L01-000	58105-90J00-000	57630-90J00-000	57633-90J02-000	09160-18028-000	-	09141-18005-000	09204-03003-000
DF100A/115A/115BG/140A/140BG	57635-92J01-000	58105-90J00-000	57630-90J00-000	57633-90J02-000	09160-18028-000	-	09141-18005-000	09204-03003-000
DF150A-300AP	57632-93L11-000	58120-93L00-000	57630-93L00-000	57633-93L00-000	09160-18028-000	-	09141-18005-000	09204-03003-000
DF300B/DF325A/350A Front	58531-98L00-000	58520-98L00-000	58540-98L00-000	58541-98L00-000	-	58551-98L00-000	58561-98L00-000	-
DF300B/DF325A/350A Rear	58631-98L00-000	58620-98L00-000	58640-98L00-000	58641-98L00-000	09160-18019-000	-	09141-18005-000	09204-03003-000

Choosing The Right Propeller

Propeller selection is very important in the performance of the boat. Acceleration, speed, fuel efficiency, stability and engine RPM all are affected by the propeller. Operating requirements and conditions will also determine which design, style and pitch of the propeller your customer can choose. The combination of boat, engine and appropriate propeller size may have already been tested by the boat manufacturer.

Your Customer may need your assistance to determine the correct propeller for their application.

Stainless Steel Propellers

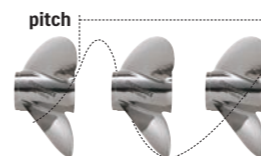
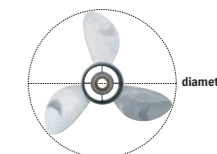
Suzuki Stainless Steel Propellers offer high performance and durability. Their aggressive design enhances the overall performance of the boat and the durability of stainless steel ensures long term dependability. Suzuki Stainless Steel propellers are also fitted with a rubber cushion hub to help absorb vibration and shock should they strike a foreign object.

Propeller Sizing

When referring to propeller size, the first number is the number of blades, the second number details the **diameter** of the propeller, and the third number is the **pitch**. Example: **3 x 13 x 18** = 3 blades x Diameter: 13 inches x Pitch: 18 inches. The pitch is the most significant factor when choosing a propeller.

Diameter

Diameter is the distance across an imaginary circle that is made when a propeller rotates. Diameter is determined during the designing process of a propeller and is usually based on engine size, gear case design, horsepower and speed.



Pitch

Pitch is the theoretical distance that a propeller corkscrews forward through the water. In theory, an 18"(457.2mm) pitch propeller would travel 18"(457.2mm) with each complete revolution*.

Lower pitches accelerate faster, but have lower top end speed. Higher pitches have a slower acceleration, but attain higher top speeds. An inch of pitch is generally equal to 150-200 engine RPM at wide open throttle (WOT). If pitch increases by an inch, RPM will decrease by 150-200 RPM at WOT. If pitch decreases by an inch, RPM will increase by 150-200 RPM at WOT.

*Note during actual operation, this number will be affected by slip factors such as water conditions, boat weight, propeller style, etc.

MAINTAINING YOUR SUZUKI



ECSTAR V7000 SEMI-SYNTHETIC MARINE ENGINE OIL



- Help to protect engines in severe conditions.
- Contribute to improve engine response.
- Viscosity index improvers help engine start easily.
- Advanced detergents keep engine parts clean.
- Special additives help protect engine in both salt and fresh water environments.

Typical Properties

SAE viscosity grade	10W-40
Oil grade	Semi-Synthetic
Quality	FC-W

Sales Unit

12x1L	990F0-22B31-001
4x4L	990F0-22B31-004
1x60L	990F0-22B31-060
1x208L	990F0-22B31-208

Part Number

ECSTAR MARINE GEAR OIL



ECSTAR MARINE GEAR OIL SAE 90 GL-5

Volume	> 1 L/60 L
Container	plastic bottle/drum
Sales Unit	
12 x 1 L	990F0-22B33-001
1x 60 L	990F0-22B33-060



ECSTAR MARINE GEAR OIL PUMP

Designed for 1 L ECSTAR gear oil bottle with hose and connector suitable for Suzuki outboard engines.

Sales Unit	1 pc
	990F0-22B33-P01

Replacement Guideline (Engine oil & Gear oil)

Interval	1st time	20 hours or 1 month*
	From 2nd time	100 hours or 1 year*

*Whichever comes first.
This guideline may vary by outboard model, condition of use, region, etc.

CARE & MAINTENANCE ITEM

SUZUKI MARINE by MOTUL



4-STROKE ENGINE OIL

SAE 10W-30 Semi-Synthetic, FC-W

12x1L	99000-22B59-4T1
4x5L	99000-22B59-4T5
60L	99000-22B59-4T6



4-STROKE ENGINE OIL

SAE 10W-40 Semi-Synthetic, FC-W

12x1L	99000-22B60-4T1
4x5L	99000-22B60-4T5
60L	99000-22B60-4T6
208L	99000-22B60-4T8



MARINE GEAR OIL

SAE 90 GL-5

12x1L	99000-22B61-001
-------	-----------------



MARINE GEAR OIL

SAE 90, GL-5

24x0.35L	99000-22B61-P35
----------	-----------------

TOUCH-UP PAINT

99000-10202-0EP

SHADOW BLACK METALLIC (set)

99000-10202-YAY

PEARL NEBULAR BLACK (set)

99000-10202-Y5S

COOL WHITE (single)

PAINT SPRAY



990F0-41005-CLR

CLEAR COAT

990F0-41005-0ED

CALIFORNIA GREY METALLIC

990F0-41005-0EP

SHADOW BLACK METALLIC

990F0-41005-YAY

PEARL NEBULAR BLACK

990F0-41005-Y5S

COOL WHITE

LIQUID GASKET



99000-31140-THR

1207B (BLACK)
100 grams (3.5 oz)

GREASE



SHELL GADUS S2 V100 3*

plastic cartridge

For AT, BE, CH, DE, FR, UK, IE, IT, LU, NL, RO
1 x 400g 990F0-25011-GER

For CZ, DK, EE, FI, UK, HU, LT, LV, NO, PL, SE, SK
1 x 400g 990F0-25011-002

For BA, BG, ES, HR, IT, PT, RO, RS, SI, TR
1 x 400g 990F0-25011-003

*Replacement for Super Grease A
99000-25011-000/99000-25480-000



99000-25350-000

WATER RESISTANT GREASE EP2
250 grams (8.8 oz)

THREAD LOCK



99000-32130-000

1360 (RED)
50 grams (1.7 oz)

FLUSH-HOSE ATTACHMENT



55181-95200-000

Applicable Model DF4A-6A/40A-60A



17917-87L00-000

Applicable Model DF8A-350A

BATTERY CHARGER



990E0-OPTIM-CAR

OptiMate 6, versatile battery charger, maintainer and tester. Recommended for STS/AGM/MF/GEL and spiral cell batteries from 15 Ah to 240 Ah.

FLUSHING TOOLHMENT



99000-81202-000

FLUSHING TOOL

Applicable Model DF325A/350A

ZINC ANODE for saltwater



55300-95500-000

Applicable Model DF8A/9.9A/40A-60A



55125-96310-000

Applicable Model DF25/R/Q



55321-90J01-000

Applicable Model DF50AV/60AV/100A-140A

ALUMINUM ANODE for brackish water, saltwater



55321-87J01-000

Applicable Model DF2.5-350A



55320-94900-000

Applicable Model DF60A-350A



55321-95J00-000

Applicable Model DF2.5,DF4A-6A

55321-93J01-000

Applicable Model DF70A-90A/100B/150-350A

MAGNESIUM ANODE for freshwater



55321-87J11-000

Applicable Model DF4A-350A



55321-94910-000

Applicable Model DF70A-350A

Anode Bulk Pack

55321-87810-B50

Applicable Model DF2.5-300AP
50pcs in one package

ENGINE COVER



99000-81700-000

Applicable Model DF8A-20A

99000-81730-000

Applicable Model DF115BG/140BG,
DF200T/Z-250T/Z

99000-81710-000

Applicable Model DF25A-60A

99000-81740-000

Applicable Model DF150A-200A/175AP/
200AP/250AP/300AP

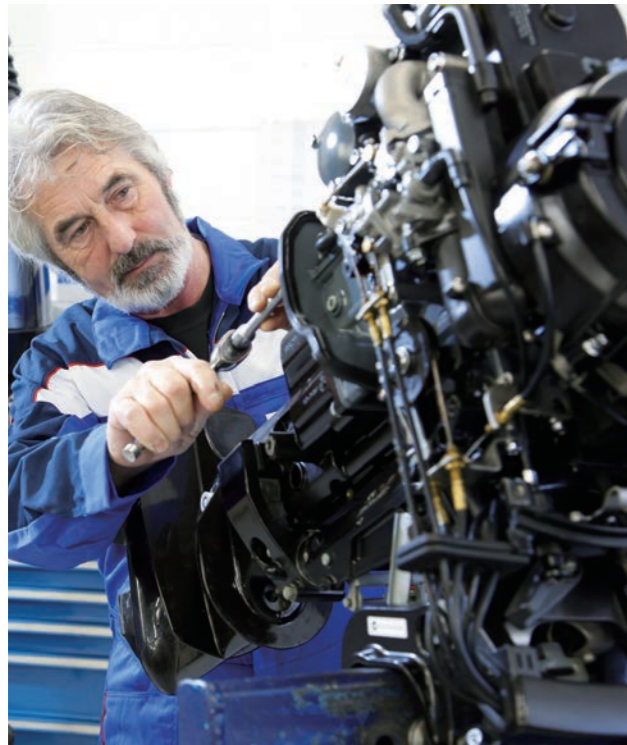
99000-81720-000

Applicable Model DF70A-140A

99000-81750-000

Applicable Model DF300B/325A/350A

MAINTENANCE KIT



SUZUKI highly recommends you to replace your outboard motor with Maintenance Kits every 100 hours or 1 year, whichever comes first.



ALL LINEUP For 4 STROKE OBM

MODEL YEAR	KIT PART NUMBER	PART NUMBER	PART NAME	QTY
DF2/2.5 ('06-'11)	17400-97820	09168-10022-000	GASKET(10X17X1.5)	1
		09202-02006-000	PIN(2.9X14)	1
		09204-02001-000	PIN	1
		09280-33005-000	O RING(D:1.9,ID:32.7)	1
		09482-00406-000	PLUG,SPARK(CR6HSA)	1
		17461-97J00-000	IMPELLER,WATER PUMP	1
		17471-97J00-000	PANEL,PUMP CASE UNDER	1
		17472-97J00-000	GASKET,PUMP CASE PANEL	1
		55321-87J01-000	ANODE,PROTECTION	1
		59178-97J00-000	GASKET,DRAIN PLUG	2
		09168-10022-000	GASKET(10X17X1.5)	1
		09202-02006-000	PIN(2.9X14)	1
09204-03003-000	PIN	1		
09280-33005-000	O RING(D:1.9,ID:32.7)	1		
09482-00406-000	PLUG,SPARK(CR6HSA)	1		
17461-97J00-000	IMPELLER,WATER PUMP	1		
17471-97J00-000	PANEL,PUMP CASE UNDER	1		
17472-97J00-000	GASKET,PUMP CASE PANEL	1		
55321-87J01-000	ANODE,PROTECTION	1		
59178-97J00-000	GASKET,DRAIN PLUG	2		

MODEL YEAR	KIT PART NUMBER	PART NUMBER	PART NAME	QTY
DF4/5/6 ('02-'10)	17400-91860	17400-98661-000	KIT, WATER PUMP REPAIR	1
		09168-10022-000	GASKET(10X17X1.5)	3
		09204-03003-000	PIN	1
		09482-00299-000	PLUG,SPARK(BPR6S)	1
		15410-98500-000	FILTER,FUEL	1
		17412-91J00-000	PANEL,WATER PUMP CASE UPR	1
		17413-91J00-000	SLEEVE,WATER PUMP CASE	1
		55321-87J01-000	ANODE,PROTECTION	2
		17400-98661-000	KIT, WATER PUMP REPAIR	1
		09168-10022-000	GASKET(10X17X1.5)	3
09204-03003-000	PIN	1		
09482-00L04-000	PLUG,SPARK(CR6EA-9)	1		
15410-98500-000	FILTER,FUEL	1		
17412-91J00-000	PANEL,WATER PUMP CASE UPR	1		
17413-91J00-000	SLEEVE,WATER PUMP CASE	1		
55321-87J01-000	ANODE,PROTECTION	2		
17400-98661-000	KIT, WATER PUMP REPAIR	1		
09168-12017-000	GASKET(12X17X1)	1		
09204-03003-000	PIN	1		
09280-39002-000	O RING(D:2.0,ID:38.5)	1		
09482-00L04-000	PLUG,SPARK(CR6EA-9)	1		
16510-16H11-000	FILTER,ENGINE OIL	1		
17412-91J00-000	PANEL,WATER PUMP CASE UPR	1		
17413-91J00-000	SLEEVE,WATER PUMP CASE	1		
44330-13H00-000	FILTER,FUEL	1		
55321-87J01-000	ANODE,PROTECTION	1		
55321-95J00-000	ANODE,PROTECTION	1		
59178-97J00-000	GASKET,DRAIN PLUG	2		
17400-99J01-000	KIT,WATER PUMP REPAIR	1		
09168-12017-000	GASKET(12X17X1)	1		
09204-02004-000	PIN	1		
09280-13004-000	O RING(D:1.9,ID:13)	1		
09280-22019-000	O RING(D:1.9,ID:21.8)	1		
09280-54001-000	O RING(D:2.4,ID:52.6)	1		
09482-00528-000	PLUG,SPARK(CR6E)	2		
15410-98500-000	FILTER,FUEL	1		
16510-45H10-000	FILTER ASSY,ENG OIL	1		
17413-94J00-000	SLEEVE,WATER PUMP CASE	1		
55321-87J01-000	ANODE,PROTECTION	2		
59178-97J00-000	GASKET,DRAIN PLUG	2		
17400-94J00-000	KIT, WATER PUMP REPAIR	1		
09168-10022-000	GASKET(10X17X1.5)	2		
09168-12017-000	GASKET(12X17X1)	1		
09204-02004-000	PIN	1		
09280-10013-000	O RING(D:2.4,ID:9.6)	1		
09482-00L04-000	PLUG,SPARK(CR6EA-9)	2		
15410-98500-000	FILTER,FUEL	1		
16510-45H10-000	FILTER ASSY,ENG OIL	1		
17413-94J00-000	SLEEVE,WATER PUMP CASE	1		
55321-90L00-000	ZINC,PROTECTION	1		
55321-99E00-000	ANODE,PROTECTION	1		
17400-99J01-000	KIT, WATER PUMP REPAIR	1		
09168-12017-000	GASKET(12X17X1)	1		
09204-02004-000	PIN	1		
09280-13004-000	O RING(D:1.9,ID:13)	1		
09280-22019-000	O RING(D:1.9,ID:21.8)	1		
09280-54001-000	O RING(D:2.4,ID:52.6)	1		
09482-00661-000	PLUG,SPARK(MR6K-9)	2		
15410-87L00-000	FILTER,FUEL	1		
16510-45H10-000	FILTER ASSY,ENG OIL	1		
17413-94J00-000	SLEEVE,WATER PUMP CASE	1		
55321-87J01-000	ANODE,PROTECTION	2		
59178-97J00-000	GASKET,DRAIN PLUG	2		
17400-95J03-000	KIT, WATER PUMP REPAIR	1		
09168-10022-000	GASKET(10X17X1.5)	2		
09168-12012-000	GASKET(12.5X20X2.5)	1		
09204-03003-000	PIN	1		
09280-10013-000	O RING(D:2.4,ID:9.6)	2		
09280-22019-000	O RING(D:1.9,ID:21.8)	1		
09482-00427-000	PLUG,SPARK(NGK,BKR6E)	2		
15410-87J30-000	FILTER,FUEL	1		
16510-87J01-000	FILTER ASSY,OIL	1		
55321-87J01-000	ANODE,PROTECTION	5		
55321-95J00-000	ANODE,PROTECTION	2		
17400-96354-000	KIT, WATER PUMP REPAIR	1		
09168-10022-000	GASKET(10X17X1.5)	2		
09168-12012-000	GASKET(12.5X20X2.5)	1		
09204-03003-000	PIN	1		
09482-00446-000	PLUG,SPARK(NGK DCPR6E)	3		
11265-87E10-000	GASKET,PROTECTION COVER	1		
15410-87J10-000	FILTER,FUEL	1		
16510-87J01-000	FILTER ASSY,OIL	1		
55321-87J01-000	ANODE,PROTECTION	1		

MODEL YEAR	KIT PART NUMBER	PART NUMBER	PART NAME	QTY
DF25A/30A ('15-)	17400-94824	17400-94L21-000	KIT, WATER PUMP REPAIR	1
		09168-12017-000	GASKET(12X17X1)	1
		09204-03003-000	PIN	1
		09280-22019-000	O RING(D:1.9,ID:21.8)	1
		09482-00661-000	PLUG,SPARK(MR6K-9)	3
		15410-87L00-000	FILTER,FUEL	1
		16510-87J01-000	FILTER ASSY,OIL	1
		17413-94L00-000	SLEEVE,WATER PUMP CASE	1
		55321-87J01-000	ANODE,PROTECTION	5
		59178-97J00-000	GASKET,DRAIN PLUG	2
		17400-96354-000	KIT, WATER PUMP REPAIR	1
		09168-10022-000	GASKET(10X17X1.5)	2
		09168-12012-000	GASKET(12.5X20X2.5)	1
		09204-03003-000	PIN	1
		09280-22019-000	O RING(D:1.9,ID:21.8)	2
		09482-00446-000	PLUG,SPARK(NGK DCPR6E)	3
		15410-87J30-000	FILTER,FUEL	1
		16510-87J01-000	FILTER ASSY,OIL	1
55321-87J01-000	ANODE,PROTECTION	2		
17400-88L01-000	KIT, WATER PUMP REPAIR	1		
09168-10022-000	GASKET(10X17X1.5)	2		
09168-12012-000	GASKET(12.5X20X2.5)	1		
09204-03003-000	PIN	1		
09280-22019-000	O RING(D:1.9,ID:21.8)	2		
09482-00446-000	PLUG,SPARK(NGK DCPR6E)	3		
15410-88L00-000	FILTER,FUEL	1		
16510-87J01-000	FILTER ASSY,OIL	1		
55321-87J01-000	ANODE,PROTECTION	3		
17400-99E12-000	KIT, WATER PUMP REPAIR	1		
09168-10022-000	GASKET(10X17X1.5)	2		
09168-12012-000	GASKET(12.5X20X2.5)	1		
09204-03003-000	PIN	1		
09280-22019-000	O RING(D:1.9,ID:21.8)	2		
09482-00446-000	PLUG,SPARK(NGK DCPR6E)	3		
15410-88L00-000	FILTER,FUEL	1		
16510-87J01-000	FILTER ASSY,OIL	1		
55321-87J01-000	ANODE,PROTECTION	3		
17400-99E12-000	KIT, WATER PUMP REPAIR	1		
09168-10022-000	GASKET(10X17X1.5)	2		
09168-12012-000	GASKET(12.5X20X2.5)	1		
09204-03003-000	PIN	1		
09280-22019-000	O RING(D:1.9,ID:21.8)	2		
09482-00446-000	PLUG,SPARK(NGK DCPR6E)	3		
15410-88L00-000	FILTER,FUEL	1		
16510-87J01-000	FILTER ASSY,OIL	1		
55321-87J01-000	ANODE,PROTECTION	3		
17400-99E12-000	KIT, WATER PUMP REPAIR	1		
09168-10022-000	GASKET(10X17X1.5)	2		
09168-12012-000	GASKET(12.5X20X2.5)	1		
09204-03003-000	PIN	1		
09280-22019-000	O RING(D:1.9,ID:21.8)	2		
09482-00446-000	PLUG,SPARK(NGK DCPR6E)	3		
15410-88L00-000	FILTER,FUEL	1		
16510-87J01-000	FILTER ASSY,OIL	1		
55321-87J01-000	ANODE,PROTECTION	3		
17400-99E12-000	KIT, WATER PUMP REPAIR	1		
09168-10022-000	GASKET(10X17X1.5)	2		
09168-12012-000	GASKET(12.5X20X2.5)	1		
09204-03003-000	PIN	1		
09280-22019-000	O RING(D:1.9,ID:21.8)	2		
09482-00446-000	PLUG,SPARK(NGK DCPR6E)	3		
15410-88L00-000	FILTER,FUEL	1		
16510-87J01-000	FILTER ASSY,OIL	1		
55321-87J01-000	ANODE,PROTECTION	3		
17400-99E12-000	KIT, WATER PUMP REPAIR	1		
09168-10022-000	GASKET(10X17X1.5)	2		
09168-12012-000	GASKET(12.5X20X2.5)	1		
09204-03003-000	PIN	1		
09280-22019-000	O RING(D:1.9,ID:21.8)	2		
09482-00446-000	PLUG,SPARK(NGK DCPR6E)	3		
15410-88L00-000	FILTER,FUEL	1		
16510-87J01-000	FILTER ASSY,OIL	1		
55321-87J01-000	ANODE,PROTECTION	3		
17400-99E12-000	KIT, WATER PUMP REPAIR	1		
09168-10022-000	GASKET(10X17X1.5)	2		
09168-12012-000	GASKET(12.5X20X2.5)	1		
09204-03003-000	PIN	1		
09280-22019-000	O RING(D:1.9,ID:21.8)	2		
09482-00446-000	PLUG,SPARK(NGK DCPR6E)	3		
15410-88L00-000	FILTER,FUEL	1		
16510-87J01-000	FILTER ASSY,OIL	1		
55321-87J01-000	ANODE,PROTECTION	3		

MODEL YEAR	KIT PART NUMBER	PART NUMBER	PART NAME	QTY
DF100B ('18-)	17400-87831	17400-87L04-000	KIT, WATER PUMP REPAIR	1
		09168-10034-000	GASKET(9.5X16.5X2)	2
		09168-12012-000	GASKET(12.5X20X2.5)	1
		09204-03003-000	PIN	1
		09280-22019-000	O RING(D:1.9,ID:21.8)	3
		09482-00446-000	PLUG,SPARK(NGK DCPR6E)	4
		15412-92J00-000	FILTER,FUEL	1
		16510-61A31-000	FILTER ASSY,OIL WAKO	1
		55321-87J01-000	ANODE,PROTECTION	3
		17400-92J23-000	KIT, WATER PUMP REPAIR	1
09168-10022-000	GASKET(10X17X1.5)	2		
09168-12012-000	GASKET(12.5X20X2.5)	1		
09204-03003-000	PIN	1		
09280-22019-000	O RING(D:1.9,ID:21.8)	2		
09482-00427-000	PLUG,SPARK(NGK,BKR6E)	4		
11265-87E10-000	GASKET,PROTECTION COVER	2		
15412-92J00-000	FILTER,FUEL	1		
16510-61A31-000	FILTER ASSY,OIL WAKO	1		
55321-87J01-000	ANODE,PROTECTION	4		
17400-92J23-000	KIT, WATER PUMP REPAIR	1		
09168-10022-000	GASKET(10X17X1.5)	2		
09168-12012-000	GASKET(12.5X20X2.5)	1		
09204-03003-000	PIN	1		
09280-22019-000	O RING(D:1.9,ID:21.8)	2		
09482-00427-000	PLUG,SPARK(NGK,BKR6E)	4		
11265-87E10-000	GASKET,PROTECTION COVER	2		
15410-87J30-000	FILTER,FUEL	1		
16510-61A31-000	FILTER ASSY,OIL WAKO	1		
55321-87J01-000	ANODE,PROTECTION	4		
17400-92J23-000	KIT, WATER PUMP REPAIR	1		
09168-10022-000	GASKET(10X17X1.5)	2		
09168-12012-000	GASKET(12.5X20X2.5)	1		
09204-03003-000	PIN	1		
09280-22019-000	O RING(D:1.9,ID:21.8)	2		
09482-00427-000	PLUG,SPARK(NGK,BKR6E)	4		
11265-87E10-000	GASKET,PROTECTION COVER	2		
15410-87J30-000	FILTER,FUEL	1		
16510-61A31-000	FILTER ASSY,OIL WAKO	1		
55321-87J01-000	ANODE,PROTECTION	4		
17400-92J23-000	KIT, WATER PUMP REPAIR	1		
09168-10022-000	GASKET(10X17X1.5)	2		
09168-12012-000	GASKET(12.5X20X2.5)	1		
09204-03003-000	PIN	1		
09280-22019-000	O RING(D:1.9,ID:21.8)	2		
09482-00427-000	PLUG,SPARK(NGK,BKR6E)	4		
11265-87E10-000	GASKET,PROTECTION COVER	2		
15410-87J30-000	FILTER,FUEL	1		
16510-61A31-000	FILTER ASSY,OIL WAKO	1		
55321-87J01-000	ANODE,PROTECTION	4		
17400-92J23-000	KIT, WATER PUMP REPAIR	1		
09168-10022-000	GASKET(10X17X1.5)	2		

Recommended STEERING SYSTEM supplied by **DOMETIC** www.dometic.com

Order taking, delivery, technical support and warranty for these products are handled by Dometic. Please consult to local Dometic distributor or dealer if you need more detail for product information, price, availability and all business terms.

STEERING KIT



BAYSTAR

BAYSTAR OUTBOARD SYSTEM - HK4200A-3	
System comprises:	
BayStar Helm 1.4cu" (22.94cc)	HH4314-3
BayStar Compact Cylinder	HC4645-3*
20ft (6096mm) "cut to length" tubing kit	HT4420H
2 x litre SeaStar hydraulic oil	HA5430

*Note: 115-140hp (85.8kw-104.4kw) four stroke 2001 to current model require HC4658H.

BAYSTAR PLUS

BAYSTAR OUTBOARD SYSTEM - HK4500A-3	
System comprises:	
BayStar Plus Helm 1.4cu" (22.94cc)	HH4514-3
BayStar Compact Cylinder	HC4645-3*
2 x litre SeaStar hydraulic oil	HA5430

*Note: 115-140hp (85.8kw-104.4kw) four stroke 2001 to current model require HC4658H.

SEASTAR

SEASTAR OUTBOARD SYSTEM - HK6400-3	
System comprises:	
SeaStar Helm 1.7cu" (27.80cc)	HH5271-3
SeaStar Pivot Cylinder	HC5345-3*
2 x litre SeaStar hydraulic oil	HA5430

*Note: 115-140hp (85.8kw-104.4kw)1996 only requires HC5348, 40-140hp (29.8kw-104.4kw)four stroke 1998 to current model and 90hp (67.1kw) four stroke 2003 to current model require HC5358.

SEASTAR TOURNAMENT SERIES

Extreme heavy duty cylinders and tie bars designed for primarily high performance multiple engine applications. Also available for single engine applications. This heavy duty universal cylinder features reversible bolt on stainless steel tie bar plates that are suitable for use with all SeaStar Helms and SeaStar Power Assist.



SEASTAR TOURNAMENT CYLINDER

Part No.	Description
HC6845	Outboard Tournament Series Cylinder, Front Mount
HC6845S	Outboard Tournament Series Cylinder, Front Mount, c/w Single Engine Hardware Kit

OPTIMUS EPS

A Higher Level Of Engineering Sophistication

The Optimus EPS system replaces the traditional hydraulic steering system.

For single, twin, triple and quad engine applications.

Advantages of Optimus EPS

- No oil at helm
- Boat that steers like a sports car
- Plug and play autopilot compatibility
- No auto pilot pump or rudder feedback unit
- Auto adjusting speed sensitive wheel effort
- Auto adjusting speed sensitive turns lock to lock

- Can be retrofitted to existing mechanical and electronic controlled engines. You do not have to buy new engines
- No tie-bars (twin configuration)
- No liquid tie-bar (CAT)
- On demand pumps which extend battery life
- Components based on existing SeaStar reliability and quality
- NMEA 2000 Certified

OPTIMUS 360

The patented Optimus 360 system builds on the Optimus EPS. Optimus 360 steering/shift/throttle control system is engineered for powerboats with electronic shift and throttle engines, allowing you to use the existing electronic controls. Optimus 360 connects to the existing control head with closed loop processing, providing a very seamless integration.

*For further application information please refer to www.dometic.com

	75 HP (55.9kw)	115 HP (85.8kw)	150 HP (111.8kw)	200 HP (149.1kw)	250 HP (186.4kw)	300 HP (223.7kw)	350 HP+ (260.9kw)
BAYSTAR	OPTIMUM						
BAYSTAR PLUS	OPTIMUM						
SEASTAR OUTBOARD SYSTEM	OPTIMUM						
SEASTAR TOURNAMENT	OPTIMUM						
SEASTAR POWER ASSIST OUTBOARD SYSTEM	OPTIMUM						

As specialists in the art of steering, Dometic takes the recommendation of steering systems very seriously especially as modern outboard engines become more powerful. Unlike other steering manufacturers we prefer to make systems recommendations based on "optimum comfort"

SEASTAR POWER ASSIST

SEASTAR OUTBOARD POWER ASSIST SYSTEM	
System comprises:	
SeaStar Helm 1.7cu" (27.80cc)	HH5271-3
SeaStar Pivot Cylinder	HC5345-3*
2 x litre SeaStar hydraulic oil	HA5430
SeaStar 12v Power Assist Unit	PA1200-2

Note: 2 x SeaStar hose kits must be ordered separately

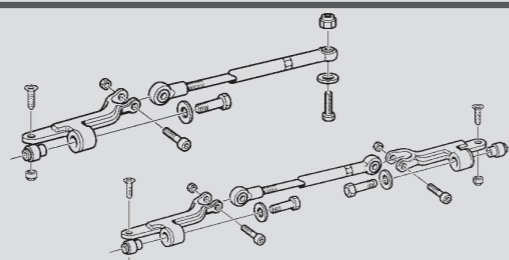
*Note: 115-140hp (85.8kw-104.4kw) 1996 only requires HC5348, 40-140hp (29.8kw-104.4kw) four stroke 1998 to current model and 90hp (67.1kw) four stroke 2003 to current model require HC5358.

TIE-BAR KIT

Features

General purpose system. Single and multiple engine capability. Total power up to 700 HP (521.9kw) *counter-rotating.

Independent engine tilt for twin engine Easy steering. 5 turns lock to lock steering response.



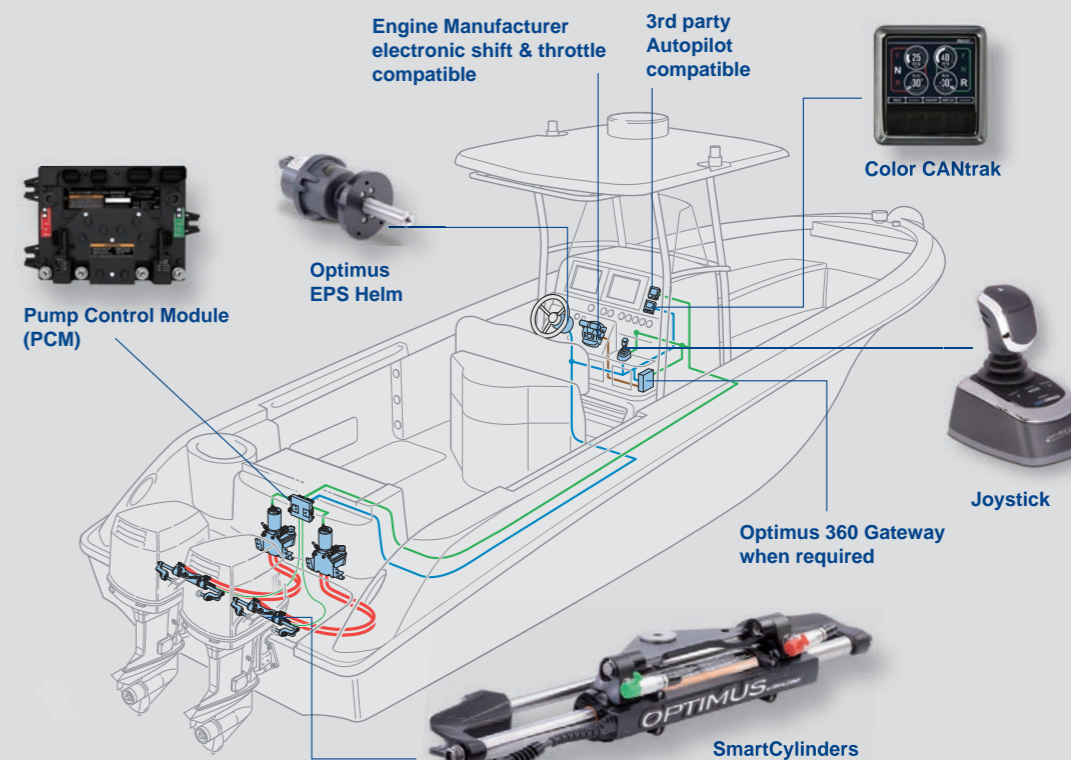
Applications

Twin Engine Application for Suzuki Outboard Motors

MODEL (4-CYCLE)	CYLINDER	TIE BAR KITS		NOTES
		TWIN ENGINE SINGLE CYL.	TWIN ENGINE DUAL CYL.	
DF40A/50A/60A	HC5358-3	HO6003	HO6002	Requires kit HO5090
DF70A/80A/90A	HC5358-3	HO6003	HO6002	Requires kit HO5090
DF100	HC5358-3	HO6003	HO6002	Requires kit HO5090
DF115/140	HC5358-3	HO6003	HO6002	Requires kit HO5090
DF150/175	HC5345-3	HO6003	HO6002	
DF200/225/250	HC5345-3	HO6003	HO6002	
DF300	HC5345-3	HO6003	HO6002	

Triple Engine Configuration for Suzuki Outboard Motors

MODEL (4-CYCLE)	CYLINDER	TIE BAR KITS		NOTES
		PORT ENGINE TO DRIVE CYL.	STARBOARD ENGINE TO DRIVE CYL.	
DF150/175	HC5345-3	HO6003	HO6002	See notice
DF200/225/250	HC5345-3	HO6003	HO6002	See notice
DF300	HC5345-3	HO6003	HO6002	See notice



Optimus EPS + Joystick = Optimus 360 Joystick Control

Advantages of Optimus 360

- Intuitive high precision Joystick docking with confidence
- Seamless integration with electronic controlled engines
- Autopilot ready - just a simple connection
- Dual station compatible

- Tiebar engines (triple & quad) – less components, simple installation, less cost
- Available as a retrofit or for new engine installation
- All the benefits of Optimus EPS, including auto adjusting steering effort and steering turns lock to lock
- Supports twin, triple and quad Suzuki Precision Control Engines